



11 Ridgeway Lane, Bristol , BS14 9PP

£300,000

Situated on Ridgeway Lane, this semi-detached bungalow is offered with no onward chain, and offers the new buyers the opportunity to put their own stamp on their new home.

Upon entering, you'll find the well-equipped kitchen, featuring ample cupboard space, providing a practical and inviting space for cooking. The spacious sitting/dining room offers a comfortable area to relax and entertain, with French doors leading to the rear garden. The bungalow benefits from two double bedrooms, both providing ample space and comfort and a white bathroom suite.

Outside, the rear garden is a great space for outdoor living, featuring a patioed area, lawn, and shrubbery, with side access to the garden. There is off-street parking for multiple cars, a garage, and a gravelled, tiered front garden.

Conveniently located close to local shops, pubs, parks, bus routes, and schools, this home offers both convenience and a peaceful setting.

A fantastic opportunity for those looking to downsize or seeking a home with potential—this bungalow has been lovingly maintained by the same family for many years, and viewing is highly recommended!

Kitchen 9'11 x 8'10 max (3.02m x 2.69m max)

Sitting/Dining Room 16'06 x 10'08 (5.03m x 3.25m)

Bedroom One 13'07 x 10'08 (4.14m x 3.25m)

Bedroom Two 9'08 x 8'10 (2.95m x 2.69m)

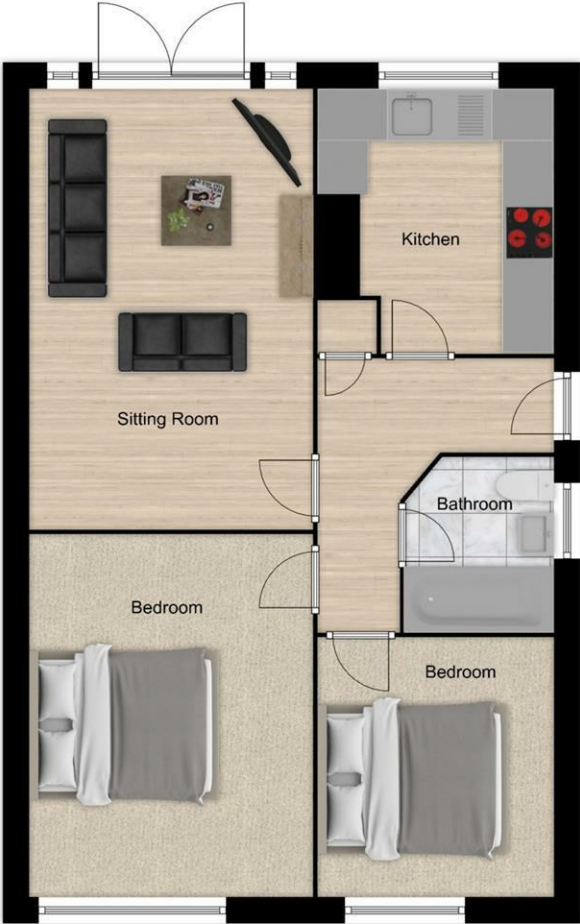
Bathroom 6'06 x 5'06 (1.98m x 1.68m)

Tenure - Freehold

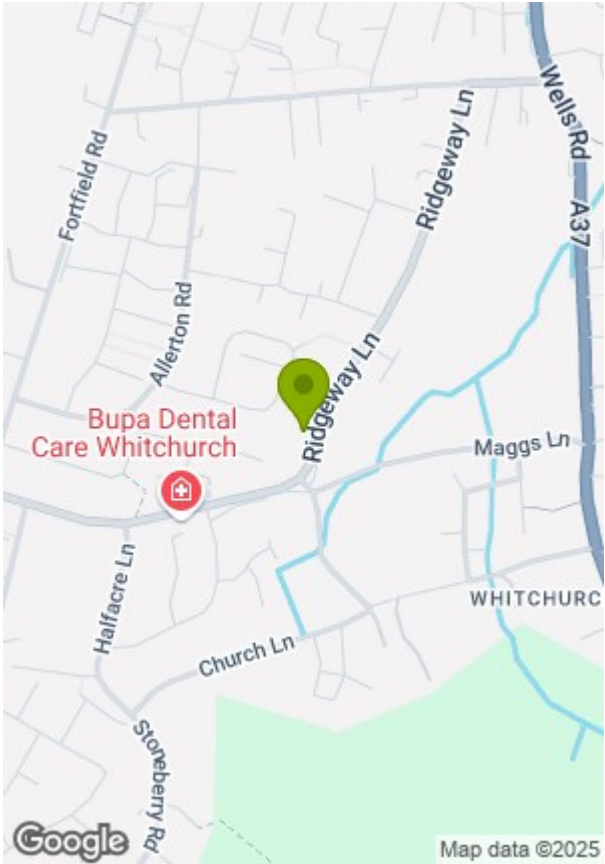
Council Tax Band - C







© Greenwood's Property Centre 2025



Energy Efficiency Rating			Environmental Impact (CO ₂) Rating		
	Current	Potential		Current	Potential
Very energy efficient - lower running costs			Very environmentally friendly - lower CO ₂ emissions		
(92 plus) A		88	(92 plus) A		
(81-91) B			(81-91) B		
(69-80) C			(69-80) C		
(55-68) D			(55-68) D		
(39-54) E			(39-54) E		
(21-38) F			(21-38) F		
(1-20) G			(1-20) G		
Not energy efficient - higher running costs			Not environmentally friendly - higher CO ₂ emissions		
England & Wales	EU Directive 2002/91/EC		England & Wales	EU Directive 2002/91/EC	

These particulars, whilst believed to be accurate are set out as a general outline only for guidance and do not constitute any part of an offer or contract. Intending purchasers should not rely on them as statements of representation of fact, but must satisfy themselves by inspection or otherwise as to their accuracy. No person in this firms employment has the authority to make or give any representation or warranty in respect of the property.