



5 Casey Close, Bristol, BS4 1FR

£300,000



- Energy Rating - B
- Side Access
- Allocated Car Parking Space
- Solar Panels
- Gas Central Heating
- Two Bedroom Semi Detached Home
- Good Size Rear Garden
- En-Suite Shower Room
- Ground Floor Cloakroom
- Floor to Ceiling Windows

Nestled within an ambitious multimillion-pound regeneration project, Filwood Park stands out as a distinctive residential enclave, offering thoughtfully designed 2, 3, and 4 bedroom homes just south of the centre of Bristol. Surrounded by expansive green spaces, including a dedicated children's play area, the development seamlessly blends natural surroundings with modern living.

Located opposite the vibrant Hengrove Leisure Park, South Bristol Skills Academy, South Bristol Community Hospital, a multiplex cinema, various restaurants, educational institutions, and supermarkets like Asda and Tesco, Filwood Park ensures unparalleled accessibility. Additionally, it offers swift access to the A4174 route to Bristol Airport and the Metro Link to the bustling city centre.

This remarkable residence is filled with natural light through its expansive ceiling-to-floor windows and features a chic, neutral color palette. At its heart is a contemporary kitchen with integrated oven & hob. An expansive 18-foot lounge/diner invites relaxation and entertainment, with French doors leading to the rear garden. The ground floor includes a convenient cloakroom, while the upper level has two generously proportioned double bedrooms, one with an en-suite shower room, and a spacious main bathroom.

The rear of the property features a meticulously maintained garden with a patio, lawn, and a garden shed, perfect for outdoor gatherings and moments of tranquility.

Primarily designed with first-time buyers in mind, this residence offers numerous practical features, side access, UPVC double glazing, gas central heating, energy-efficient solar panels, and an allocated car parking space.

Lounge/Diner 20'9" max x 13'0" (6.33 max x 3.98 )

Kitchen 10'1" x 6'2" (3.08 x 1.88)

Ground Floor Cloakroom 5'2" x 2'11" (1.60 x 0.89)

Bedroom One 12'11" x 10'5" (3.96 x 3.19)

En - Suite 6'2" x 5'5" max (1.88 x 1.67 max)

Bedroom Two 12'11" x 8'4" (3.95 x 2.56 )

Bathroom 6'9" max x 6'2" (2.06 max x 1.89)

Tenure - Freehold

Maintenance charge - £514..96 pa - Reviewed annually

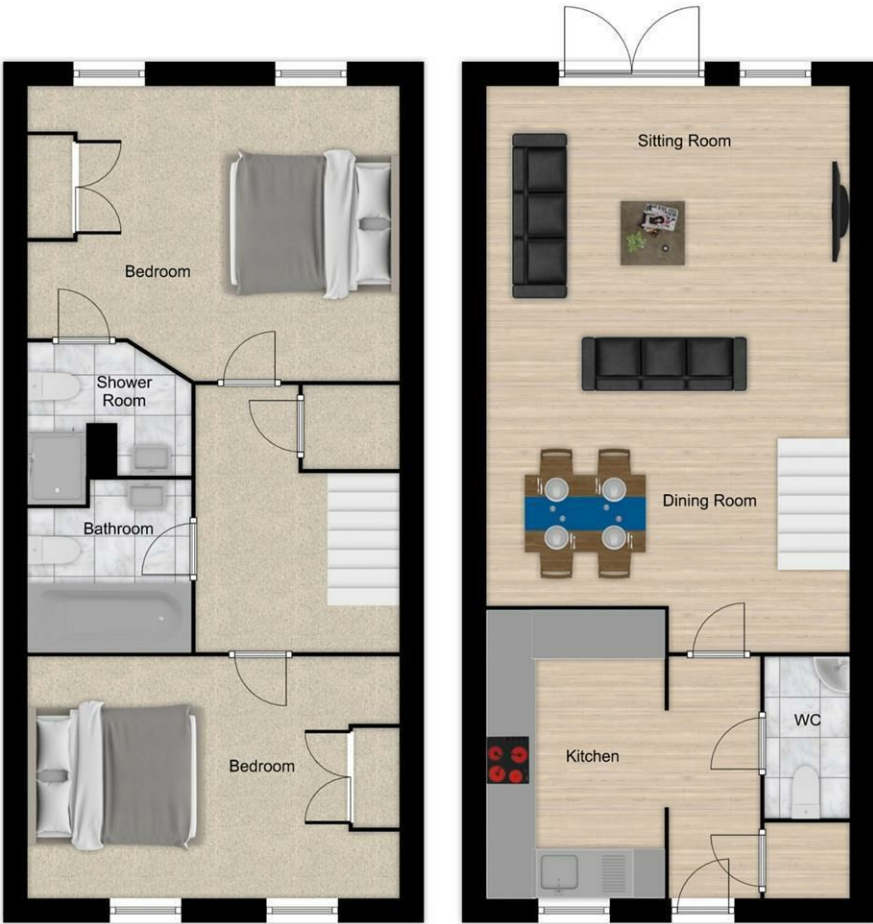
Council Tax Band - B



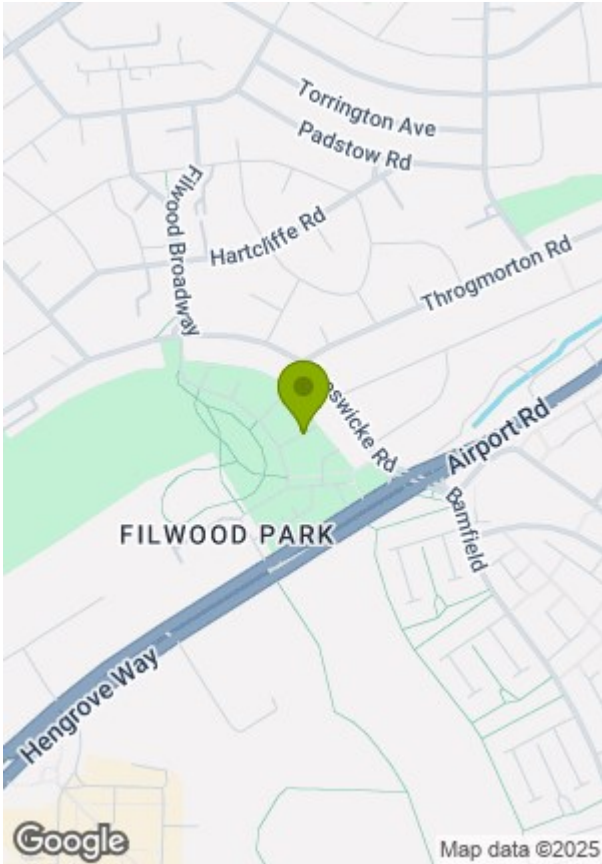








© Greenwood's Property Centre 2023



Energy Efficiency Rating			Environmental Impact (CO <sub>2</sub> ) Rating		
	Current	Potential		Current	Potential
Very energy efficient - lower running costs			Very environmentally friendly - lower CO <sub>2</sub> emissions		
(92 plus) A			(92 plus) A		
(81-91) B			(81-91) B		
(69-80) C			(69-80) C		
(55-68) D			(55-68) D		
(39-54) E			(39-54) E		
(21-38) F			(21-38) F		
(1-20) G			(1-20) G		
Not energy efficient - higher running costs			Not environmentally friendly - higher CO <sub>2</sub> emissions		
England & Wales	EU Directive 2002/91/EC		England & Wales	EU Directive 2002/91/EC	

These particulars, whilst believed to be accurate are set out as a general outline only for guidance and do not constitute any part of an offer or contract. Intending purchasers should not rely on them as statements of representation of fact, but must satisfy themselves by inspection or otherwise as to their accuracy. No person in this firms employment has the authority to make or give any representation or warranty in respect of the property.