



Church Lane, Whitchurch

£650,000

A unique four bedroom character cottage beautifully presented throughout and located on the ever popular Church Lane, just a short walk away from the OUTSTANDING Bridge Farm Primary School and Sunshine Pre-School. A short drive away is Hengrove Leisure Centre and Imperial Retail Park offering a range of different shops. There are also local bus routes, pubs, parks and amenities nearby.

The inside of the property comprises; an entrance porch, generously sized cosy sitting room with feature log burner, a stunning open plan, light and airy, kitchen/living space with conservatory and views over the rear garden, a utility area, ground floor cloakroom and garage. On the first floor there are; four double bedrooms, a family bathroom with free standing bath and separate shower cubicle, an en-suite with his and hers sink also with a separate shower cubicle.

To the rear of the property is a 110ft south facing garden backing on to countryside views. The garden is laid mainly to lawn with a slightly raised patio area and summer house.

Further benefits include; a double garage which could easily be converted into a separate annexe or fifth bedroom, a driveway with parking for two cars, Upvc double glazing & gas central heating.

This very loved home would be perfect for a growing family or simply a step up the property ladder.

Lounge 20'2" x 13'3" (6.15m x 4.06m)

Kitchen 10'2" x 6'11" (3.12m x 2.13m)

Dining Room 16'2" x 10'5" (4.95m x 3.20m)

Conservatory 14'0" x 11'3" (4.27m x 3.45m)

Utility Room 8'11" x 6'7" (2.74m x 2.03m)

Ground Floor Cloakroom 3'7" x 5'8" (1.09m x 1.73m)

Bedroom One 19'5" x 15'10" (5.92m x 4.85m)

En-Suite 10'7" x 9'1" (3.23m x 2.77m)

Bedroom Two 13'6" x 10'5" (4.14m x 3.20m)

Bedroom Three 13'5" x 10'4" (4.11m x 3.15m)

Bedroom Four 13'5" x 9'10" (4.09m x 3.00m)

Bathroom 6'4" x 10' (1.93m x 3.05m)

Garage 13'3" x 19'9" (4.04m x 6.02m)

Council Tax Band - D

Tenure Status - Freehold

- **Energy Rating - C**

- **EXTENDED**

- **Beautifully Presented Throughout**

- **110ft South Facing Rear Garden**

- **Double Garage**

- **Four Double Bedrooms**

- **Period Cottage**

- **En-Suite Bathroom**

- **Potential For an Annexe**

- **Off Street Parking**





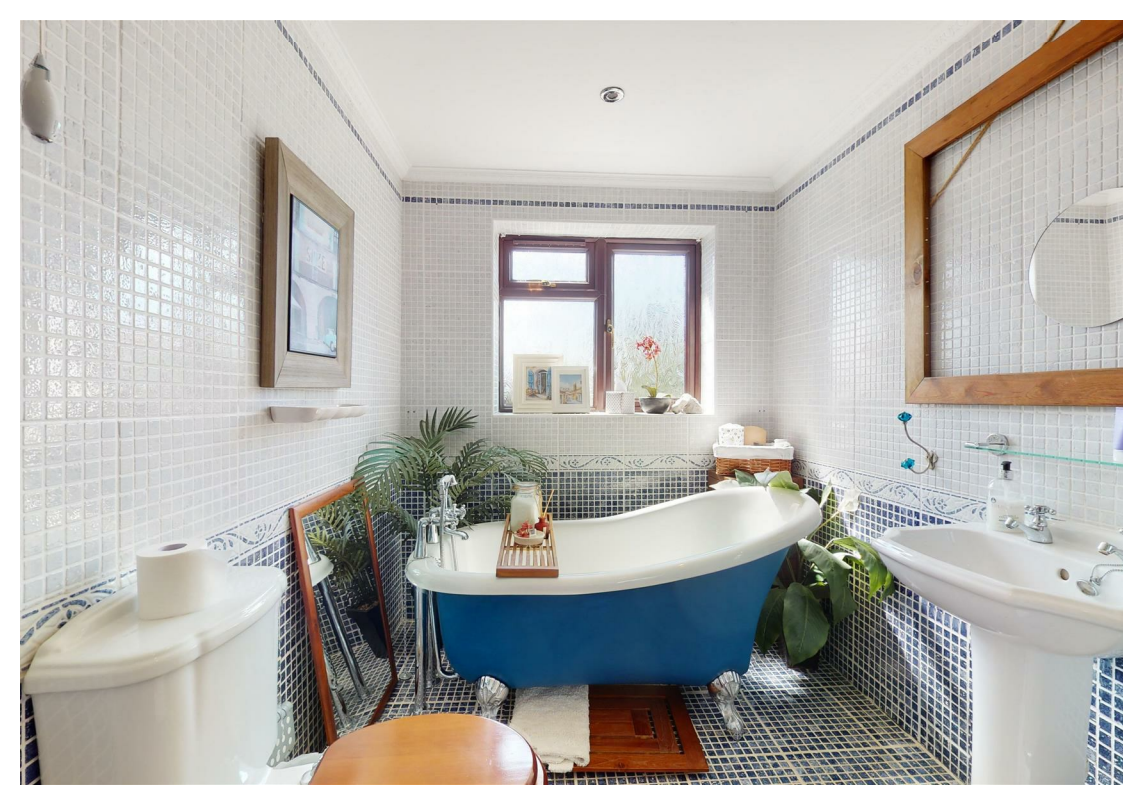








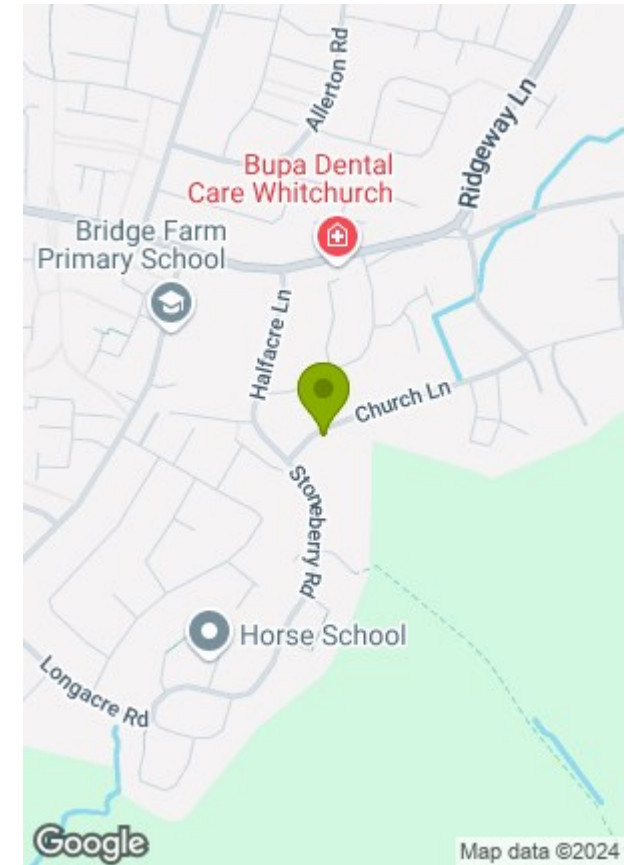




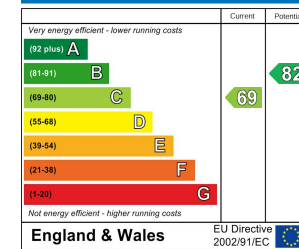




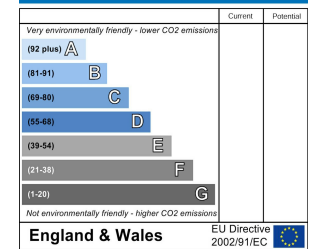
© Greenwoods Property Centre 2023



Energy Efficiency Rating



Environmental Impact (CO₂) Rating



These particulars, whilst believed to be accurate are set out as a general outline only for guidance and do not constitute any part of an offer or contract. Intending purchasers should not rely on them as statements of representation of fact, but must satisfy themselves by inspection or otherwise as to their accuracy. No person in this firm's employment has the authority to make or give any representation or warranty in respect of the property.