

Lampton Grove, Hartcliffe

£230,000

- Energy Rating - E
- NO ONWARD CHAIN
- Outside Storage Shed
- Driveway & Garage
- Two Bedroom Terraced Home
- Kitchen/Diner
- Southerly Facing Garden
- Backs Onto Fields

Greenwoods is delighted to present this charming two-bedroom home, now available with the added benefit of NO ONWARD CHAIN. Upon entering, you're welcomed by a bright and inviting hallway, leading to a comfortable lounge and a spacious kitchen/diner, ideal for family gatherings and entertaining guests.

Upstairs, the property offers two generously sized double bedrooms and a well-appointed bathroom featuring a shower over the bath. The enclosed, southerly-facing garden provides a tranquil escape, beautifully landscaped with a mix of patio and lawn, and enjoys the serene backdrop of open fields. Additional outdoor features include a handy shed/storage room and a garage.

At the front, a driveway provides convenient off-street parking and leads directly to the garage for added convenience. The home is further enhanced by UPVC double glazing and efficient gas central heating powered by a combination boiler. Perfectly positioned close to local shops, schools, bus routes, and amenities, this home combines comfort, convenience, and practicality for its lucky new owners.

Lounge 15'9" into recess x 12'4" max (4.81 into recess x 3.78 max)

Kitchen 15'8" max x 10'2" max (4.80 max x 3.10 max)

Bedroom One 15'8" max x 10'9" (4.79 max x 3.30)

Bedroom Two 9'2" x 8'5" (2.80 x 2.59)

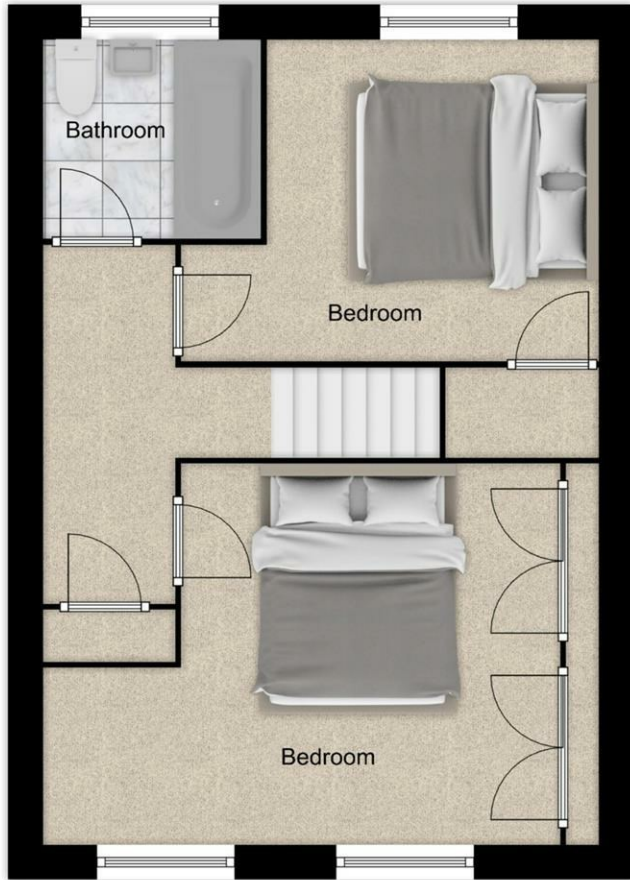
Bathroom 6'2" x 5'5" (1.89 x 1.66)

Tenure Status - Freehold

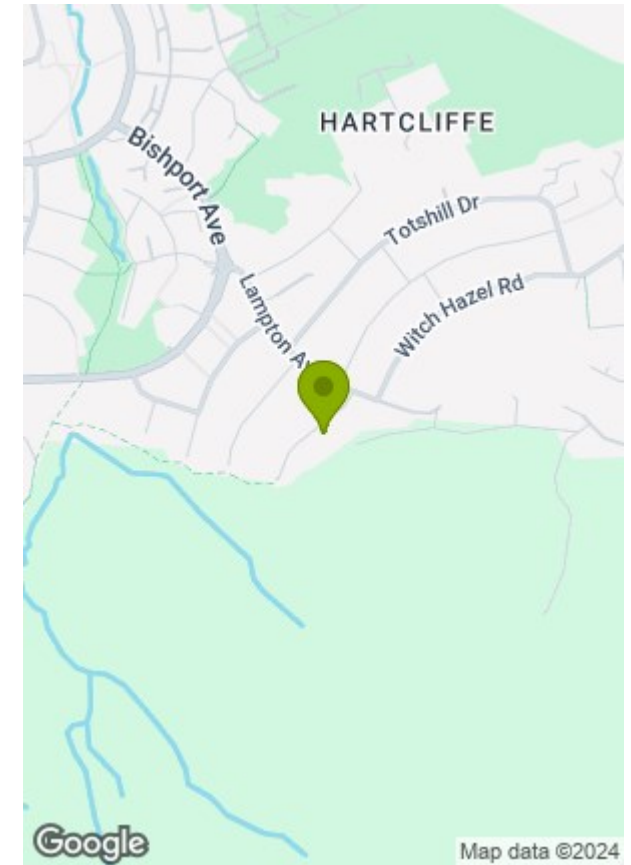
Council Tax - Band B



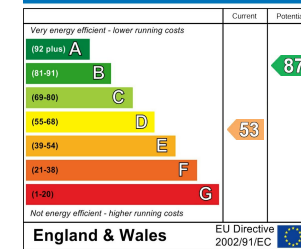




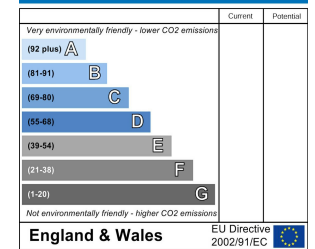
© Greenwoods Property Centre 2024



Energy Efficiency Rating



Environmental Impact (CO₂) Rating



These particulars, whilst believed to be accurate are set out as a general outline only for guidance and do not constitute any part of an offer or contract. Intending purchasers should not rely on them as statements of representation of fact, but must satisfy themselves by inspection or otherwise as to their accuracy. No person in this firm's employment has the authority to make or give any representation or warranty in respect of the property.