

The Overview

Property Name:
2 Godwin Avenue
Wigston
LE18 3PL

Price:
£215,000

Qualifier:
Offers over

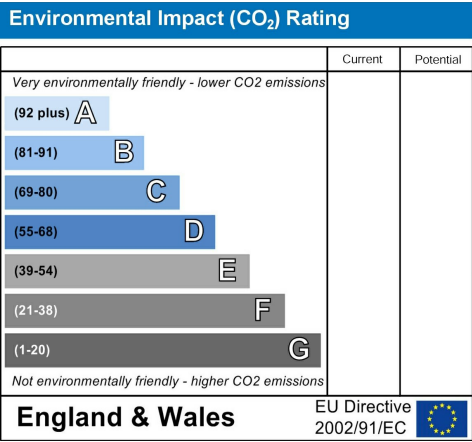
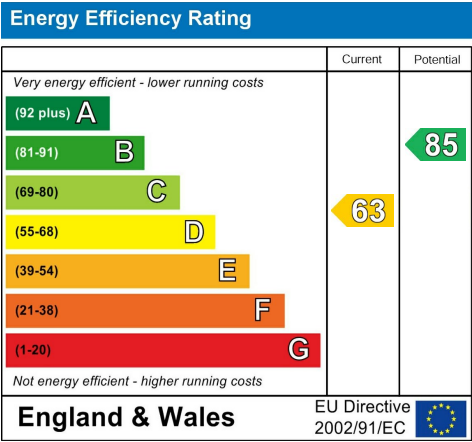
**2**

**1**

**1**

**D**

The EPC



The Bullet Points

- Sought-After Residential Setting
 - Private Rear Garden Space
- Offered with No Onward Chain
 - Fully Double-Glazed Throughout



The Main Text

Nestled on the tranquil Godwin Avenue in Wigston, this charming two-bedroom semi-detached bungalow offers a delightful living experience. Spanning 614 square feet, the property is ideally situated away from the hustle and bustle of the main road, ensuring a peaceful environment while still being conveniently close to local amenities. Residents will appreciate the proximity to shops, supermarkets, and places of worship, as well as easy access to key roads such as Bull Head Street and Oadby Road.

The bungalow features a welcoming reception room, perfect for relaxation or entertaining guests. The two well-proportioned bedrooms provide ample space for comfortable living, while the bathroom is conveniently located to serve the needs of the household.

This property is particularly appealing for both residential buyers and investors alike, given its desirable location and the absence of a chain, allowing for a smooth transition. With its freehold status, you can enjoy the benefits of ownership without the constraints of leasehold agreements.

In summary, this semi-detached bungalow on Godwin Avenue is a rare find that combines comfort, convenience, and potential. Do not miss the opportunity to make this lovely property your new home or investment.

Viewings are available by appointment—contact REMAX Solvers today to arrange yours!



2 Godwin Avenue, Wigston, LE18 3PL

The Photographs

Please note: we have provided space for 48 photographs over the next four pages, but we may not fill all 48 spaces if we don't need to. If there are more than 48 photographs then we will email the remainder to you.



The Photographs

Please note: we have provided space for 48 photographs over the next four pages, but we may not fill all 48 spaces if we don't need to. If there are more than 48 photographs then we will email the remainder to you.

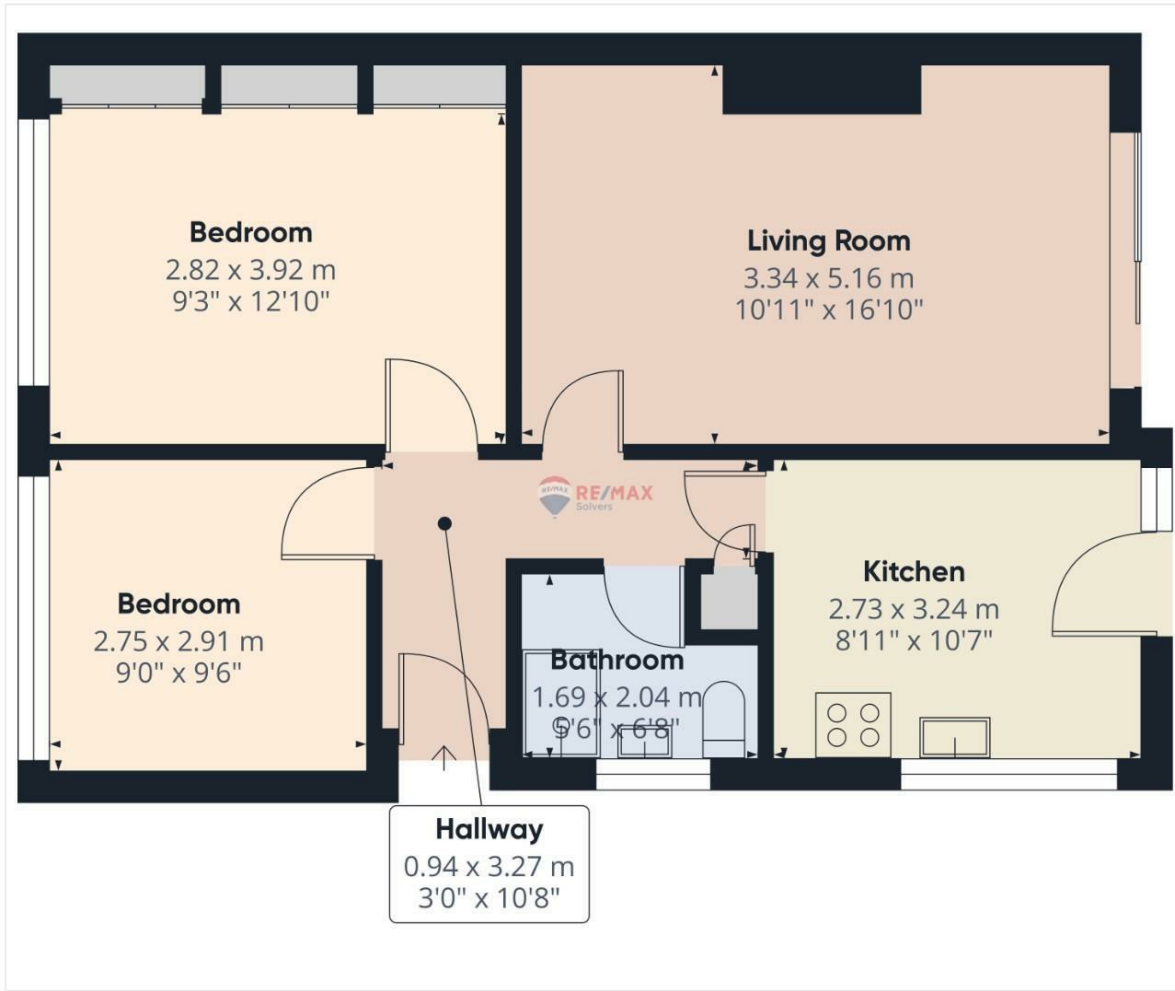


2 Godwin Avenue, Wigston, LE18 3PL



RE/MAX
PROPERTY HUB

The Floorplan



Approximate total area^m
55.9 m²
600 ft²

(1) Excluding balconies and terraces

While every attempt has been made to ensure accuracy, all measurements are approximate, not to scale. This floor plan is for illustrative purposes only.

Calculations are based on RICS IPMS 3C standard.

GIRAFFE360

The Map



RE/MAX
PROPERTY HUB

2 Godwin Avenue, Wigston, LE18 3PL