



RE/MAX
North

Apartment 30E, 240, Quay 5 Ordsall Lane, Salford, M5 3NG

£1,150 Per month



1



1



1



D

RE/MAX
North



RE/MAX
North

£1,150 Per month

Apartment 30E, 240, Quay 5 Ordsall Lane

Salford, M5 3NG

- Fully furnished
- Excellent transport links
- Spacious bedroom and family bathroom
- Secure parking space in a gated car park
- Close to local amenities including supermarkets and gym

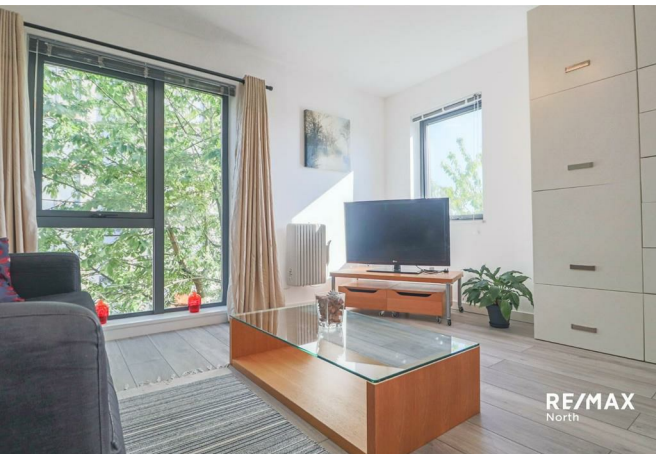
A beautifully presented 1-bedroom apartment located in the highly sought-after Quay 5 development. Perfectly suited for a young professional or single occupant, this apartment benefits from a secure parking space within the gated car park, offering convenience and peace of mind.

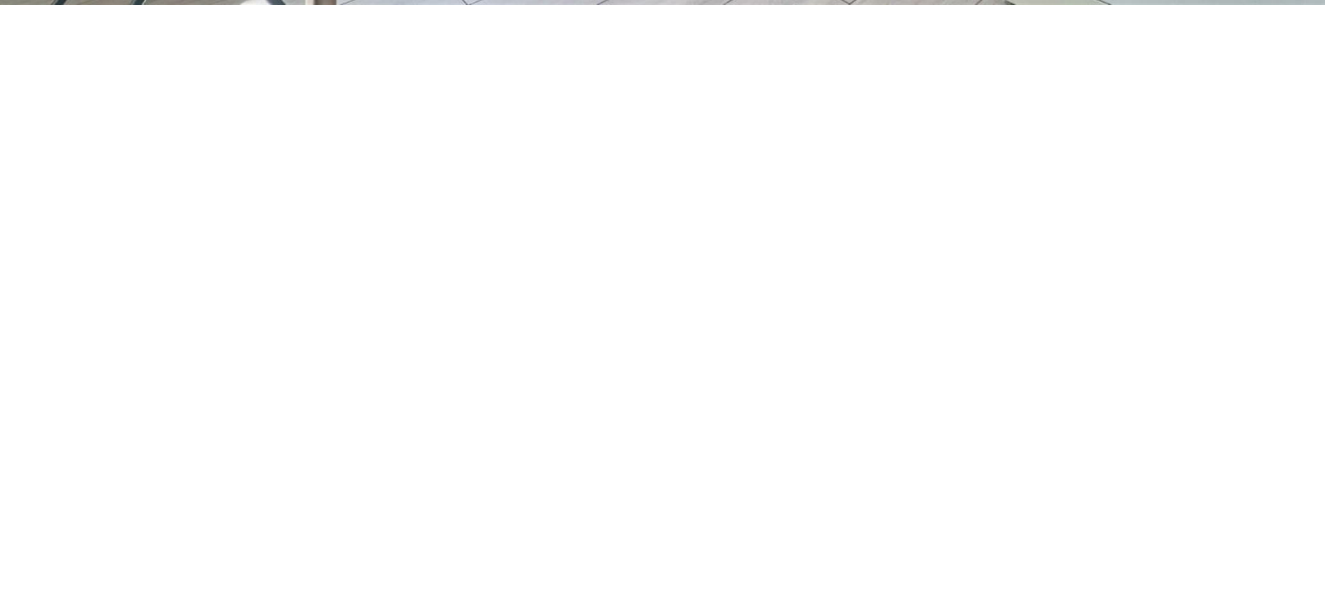
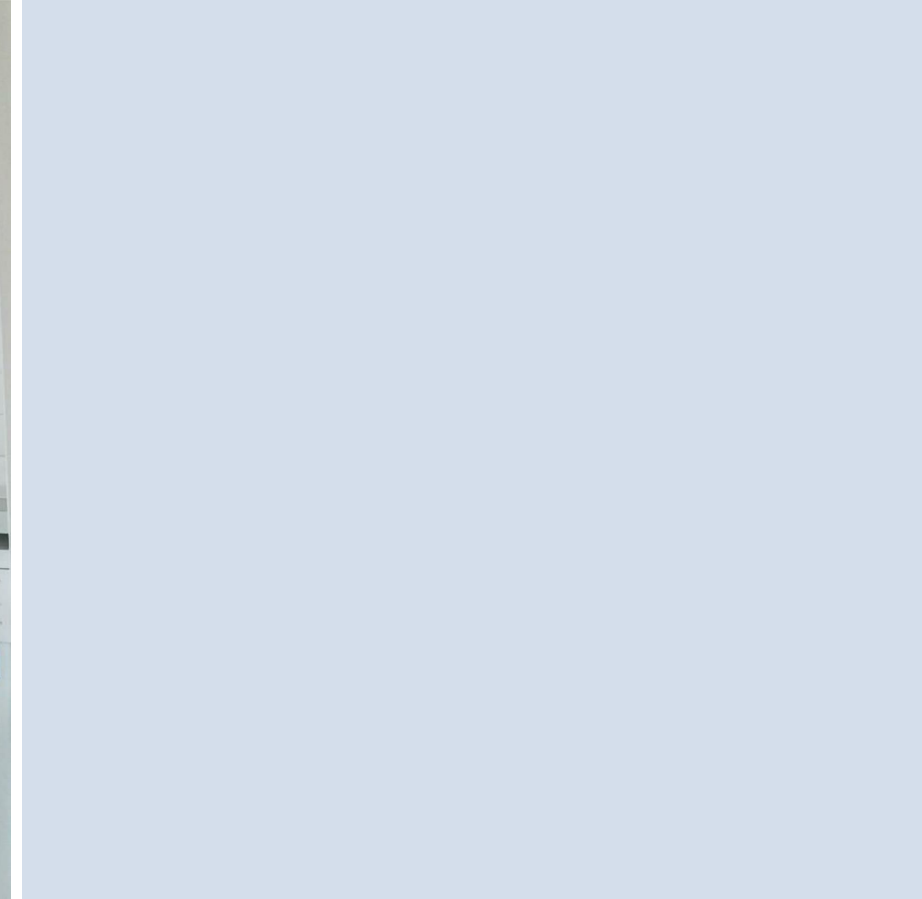
Offered furnished, the property comprises an entrance hall leading to an open-plan living, kitchen, and dining area—ideal for modern living. The spacious bedroom provides a comfortable retreat, and the family bathroom completes the apartment.

The location offers excellent transport links, with Metrolink services available from Exchange Quay station, just a short distance from the property. Additionally, local amenities are plentiful, including a small Co-op nearby and the Regent Road Retail Park, just a short walk away, featuring a large Sainsbury's supermarket, JD gym, Boots, and a petrol station.

EPC Grade = D.

Council Tax Band = B.







RE/MAX
North

Floor Plans



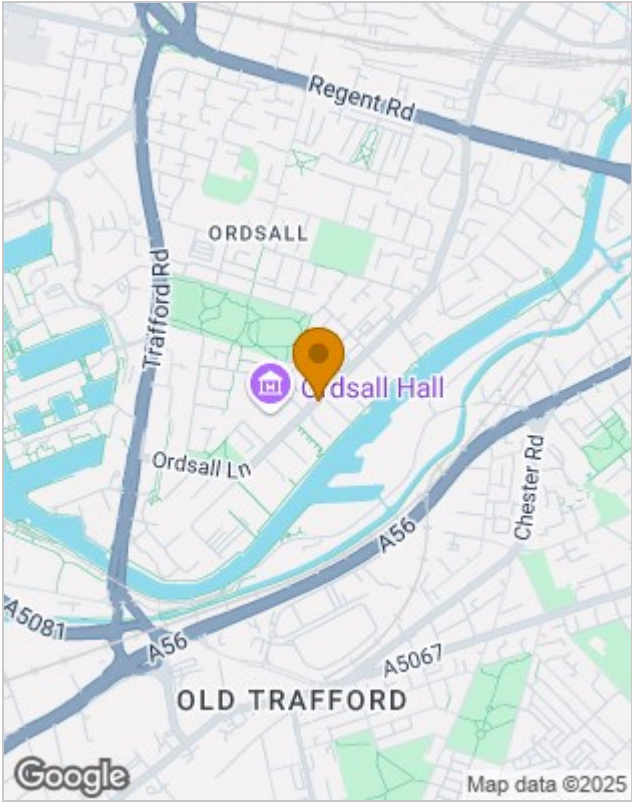
Viewing

Please contact our RE/MAX North Lettings Office on +44 (0) 1618 040807 if you wish to arrange a viewing appointment for this property or require further information.

The particulars are set out as a general outline only for the guidance of intended purchasers or lessees, and do not constitute, any part of a contract. Nothing in these particulars shall be deemed to be a statement that the property is in good structural condition or otherwise nor that any of the services, appliances, equipment or facilities are in good working order. Purchasers should satisfy themselves of this prior to purchasing.

94 Phoebe Street, Salford, Greater Manchester, M5 3PH
Tel: +44 (0) 1618 040807 Email: remax.north@remax.co.uk remax.co.uk

Location Map



Energy Performance Graph

