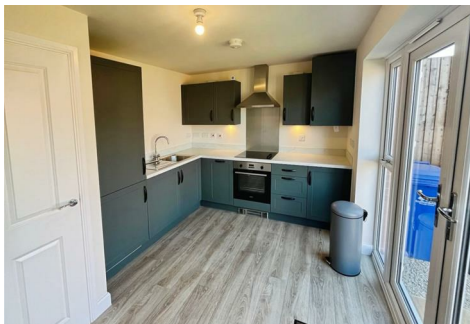




RE/MAX

PROPERTY HUB



28 Dowling Road, Uttoxeter, ST14 8WF

£950 Per month

This delightful end-terrace house offers a perfect blend of modern living and comfort. Built in 2023, the property boasts a contemporary design and is ready for you to make it your own. This home features a well-appointed reception room that provides a welcoming space for relaxation and entertaining.

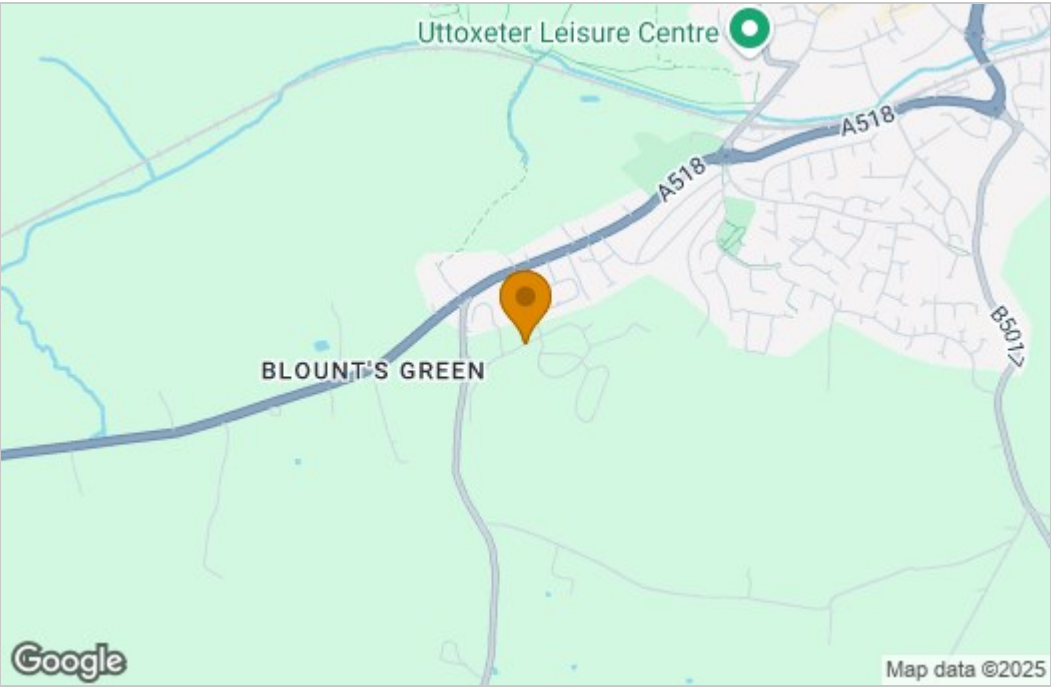
The property comprises two spacious bedrooms, ideal for a small family or those seeking a guest room or home office. The bathroom is thoughtfully designed, ensuring convenience and style. With its fresh construction, you can enjoy the benefits of modern amenities and energy efficiency, making it a practical choice for today's lifestyle.

Situated in a pleasant neighbourhood, this home is conveniently located near local amenities, schools, and parks, making it an excellent choice for families and professionals alike. The end-terrace position offers added privacy and a sense of space, while still being part of a friendly community.

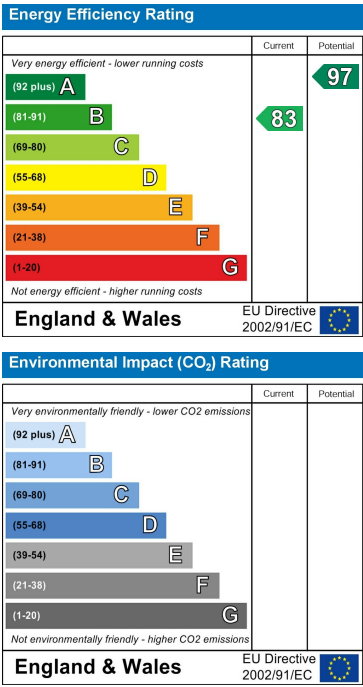
This property presents a wonderful opportunity for anyone looking to settle in Uttoxeter. Whether you are a first-time buyer or seeking a low-maintenance home, this house is sure to impress. Don't miss the chance to view this modern gem on Dowling Road, where comfort and convenience await.

Floor Plan

Area Map



Energy Efficiency Graph



These particulars, whilst believed to be accurate are set out as a general outline only for guidance and do not constitute any part of an offer or contract. Intending purchasers should not rely on them as statements of representation of fact, but must satisfy themselves by inspection or otherwise as to their accuracy. No person in this firms employment has the authority to make or give any representation or warranty in respect of the property.