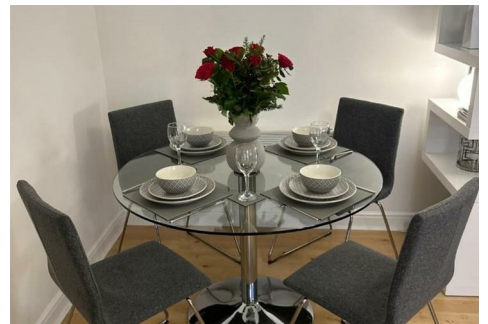




RE/MAX

PROPERTY HUB



Flat 29, Riverhope Mansions Harlinger Street, London, SE18 5SS

£1,750 Per month

RIVERHOPE MANSIONS - ZERO DEPOSIT OPTION AVAILABLE - Recently refurbished to an excellent standard this bright 2 double bedroom apartment is situated on the 2nd floor. Living room with Juliette balcony with direct views of the River Thames.

High specification fully fitted kitchen including fully integrated oven, hob, extractor, fridge freezer, washer/dryer, dishwasher & microwave.

Two double bedrooms with mirrored wardrobes and ample under bed storage. The property benefits from laminate flooring to the hall, living room & bedrooms.

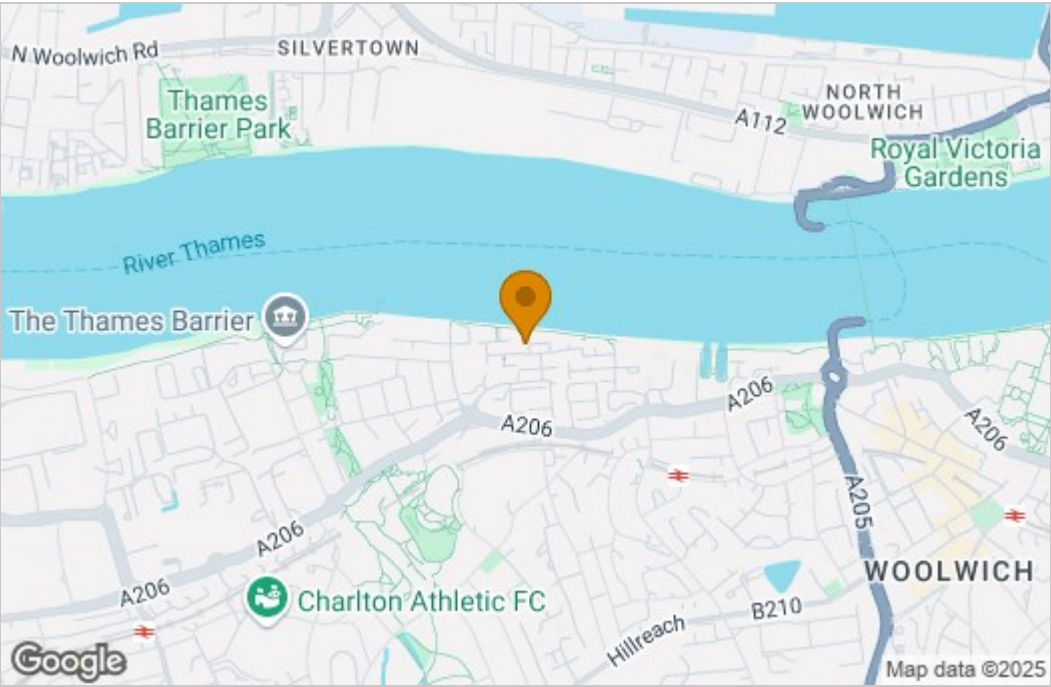
The property is a short walk to Woolwich Dockyard Station for the South-Eastern/Thameslink service to London Bridge, Charing Cross & Cannon Street. Woolwich Arsenal is a further walk or short bus journey for the DLR and Elizabeth Line.

Walking distance for 161, 180 & 472 bus routes to North Greenwich for the Jubilee Line & 177 towards Greenwich Village.

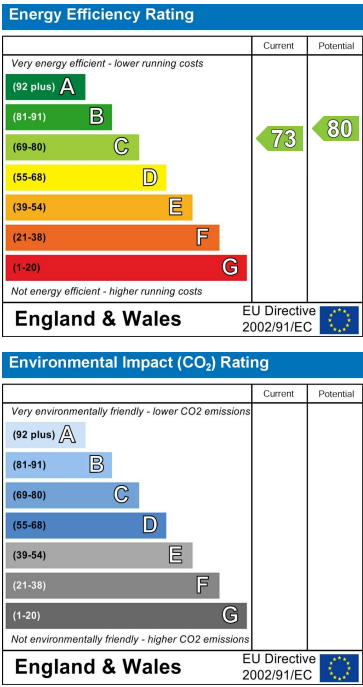
Suitable for professional couple or 2 professional sharers. Comprehensive referencing will be carried out on application. Available immediately for suitable candidates.

Floor Plan

Area Map



Energy Efficiency Graph



These particulars, whilst believed to be accurate are set out as a general outline only for guidance and do not constitute any part of an offer or contract. Intending purchasers should not rely on them as statements of representation of fact, but must satisfy themselves by inspection or otherwise as to their accuracy. No person in this firms employment has the authority to make or give any representation or warranty in respect of the property.