



# RE/MAX

## PROPERTY HUB



**5 Pine Walk, Uttoxeter, ST14 7NL**

**Asking price £325,000**

Nestled in the charming area of Pine Walk, Uttoxeter, this delightful detached bungalow presents an excellent opportunity for those seeking a comfortable and spacious home. With three well-proportioned bedrooms, this property is ideal for families or those looking to downsize without compromising on space.

Upon entering, you will be greeted by two inviting reception rooms, perfect for entertaining guests or enjoying quiet evenings with family. The new flooring throughout the bungalow adds a fresh and modern touch, enhancing the overall appeal of the home.

One of the standout benefits of this property is that it comes with no upward chain, allowing for a smooth and hassle-free purchase process.

In summary, this bungalow on Pine Walk is a wonderful opportunity to acquire a lovely home in a sought-after area, combining comfort, style, and practicality. Do not miss the chance to make this property your own.

### Entrance Hall

With access off to the lounge, kitchen, three bedrooms and bathroom.

### Lounge 13'5" x 19'5" (4.11 x 5.94)

With dual aspect views with two windows to the side elevation and one to the front elevation.

### Kitchen 8'11" x 8'6" (2.72 x 2.60)

With a range of wall and base units, sink and drainer, double oven and electric hob. Space for washing machine and fridge freezer.

### Bedroom One 8'11" x 14'0" (2.73 x 4.27)

With window to the side elevation and fitted wardrobes.

### Bedroom Two 10'7" x 10'2" (3.24 x 3.10)

With sliding door fitted wardrobes and door leading on to conservatory.

### Conservatory 10'2" x 9'3" (3.10 x 2.84)

With fitted blinds, and french doors leading to the garden.

### Bedroom Three 9'8" x 6'10" (2.96 x 2.09)

With window to the front elevation.

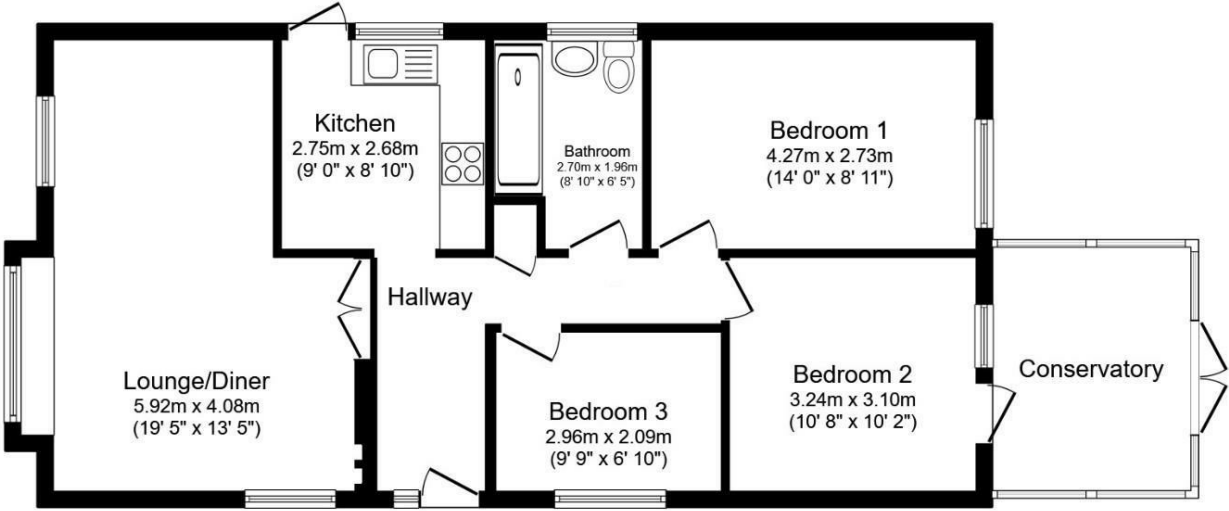
### Garage

With up and over door.

### Outside

A gated entry leading to a low maintenance frontage and side. with recent erected fencing. The rear has dual access to either elevation and boasts a part-lawn and part-gravelled plot.

Floor Plan



Floor Plan

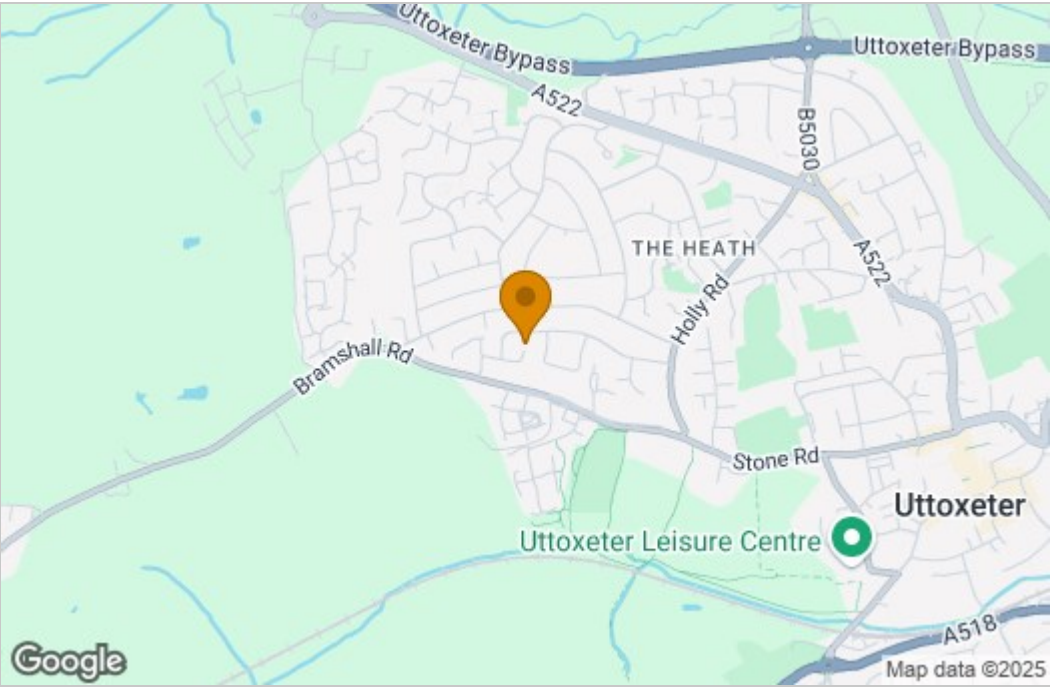
Floor area 72.4 sq.m. (779 sq.ft.)

Total floor area: 72.4 sq.m. (779 sq.ft.)

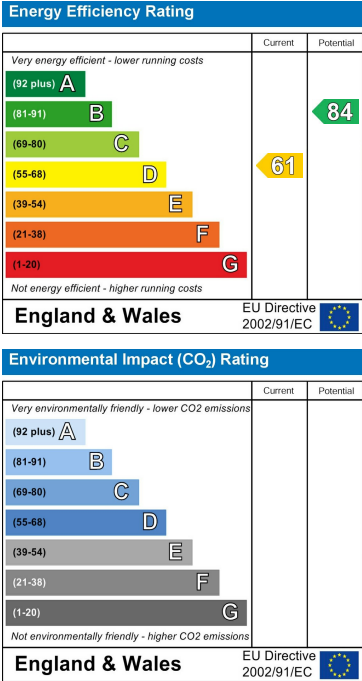
This floor plan is for illustrative purposes only. It is not drawn to scale. Any measurements, floor areas (including any total floor area), openings and orientations are approximate. No details are guaranteed, they cannot be relied upon for any purpose and do not form any part of any agreement. No liability is taken for any error, omission or misstatement. A party must rely upon its own inspection(s). Powered by www.Propertybox.io



Area Map



Energy Efficiency Graph



These particulars, whilst believed to be accurate are set out as a general outline only for guidance and do not constitute any part of an offer or contract. Intending purchasers should not rely on them as statements of representation of fact, but must satisfy themselves by inspection or otherwise as to their accuracy. No person in this firms employment has the authority to make or give any representation or warranty in respect of the property.