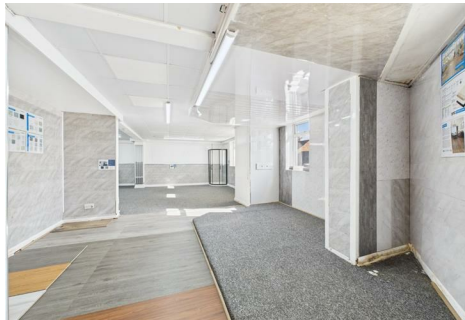




RE/MAX
Solvers



47c London Road, Oadby, LE2 5DN
£1,500 Per month

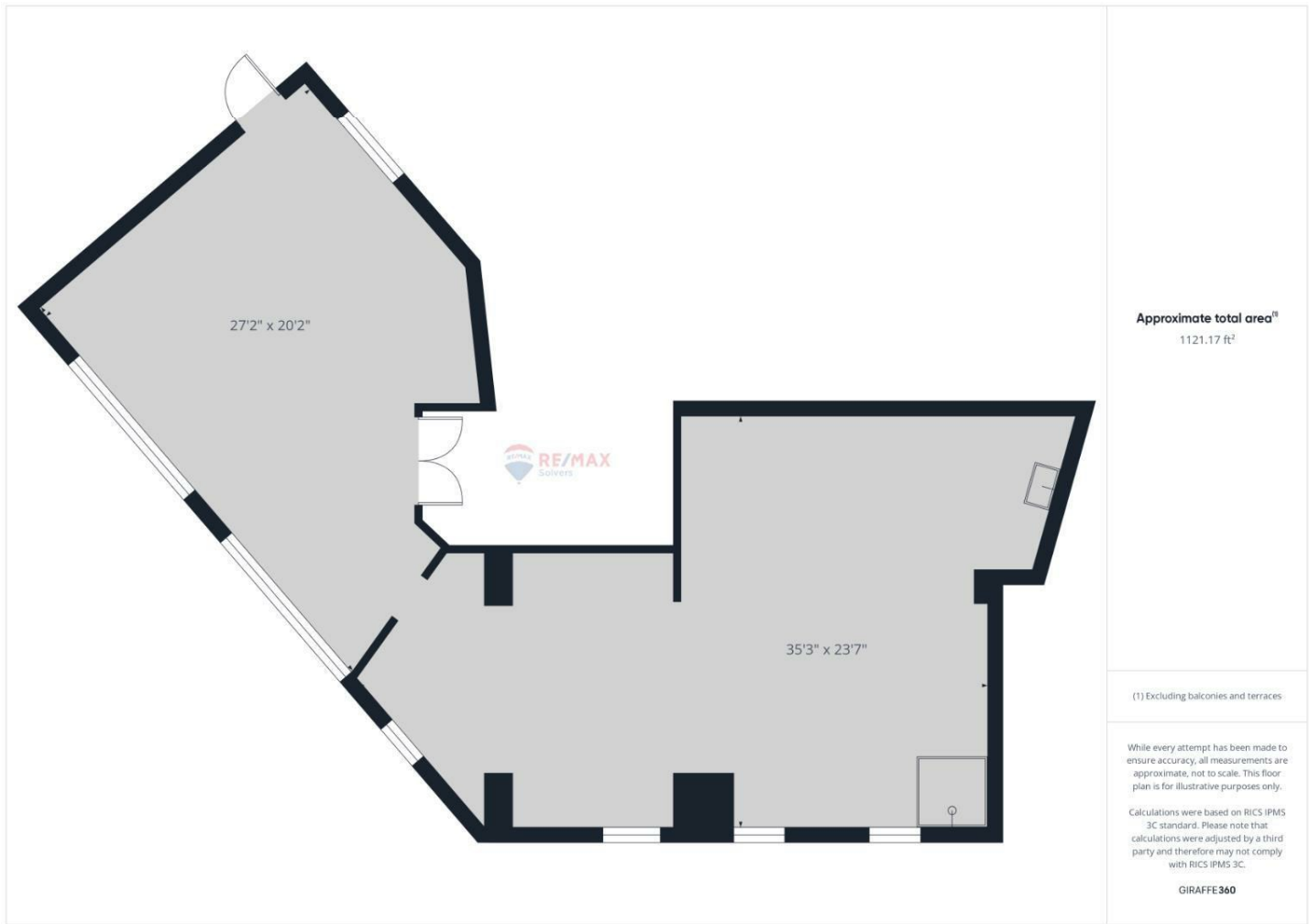
Nestled in the vibrant area of Oadby, this commercial property on London Road offers an excellent opportunity for businesses seeking a modern and spacious environment. Spanning an impressive 1,121 square feet, the property features an open-plan layout that is both versatile and inviting, making it ideal for a variety of business ventures.

The property boasts a separate entrance, ensuring privacy and ease of access for both staff and clients. Its contemporary design enhances the overall appeal, providing a professional setting that is sure to impress. Additionally, the location is highly sought after, benefiting from a steady flow of foot traffic and visibility, which is essential for any thriving business.

For added convenience, the property includes two allocated parking spaces, a valuable asset in this bustling area. This feature not only facilitates easy access for employees but also enhances customer experience, making visits to your business hassle-free.

This commercial space is available to let, presenting a fantastic opportunity for entrepreneurs and established businesses alike to establish themselves in a popular location. With its modern amenities and prime positioning, this property is poised to support your business's success. Do not miss the chance to secure this exceptional space in Oadby.

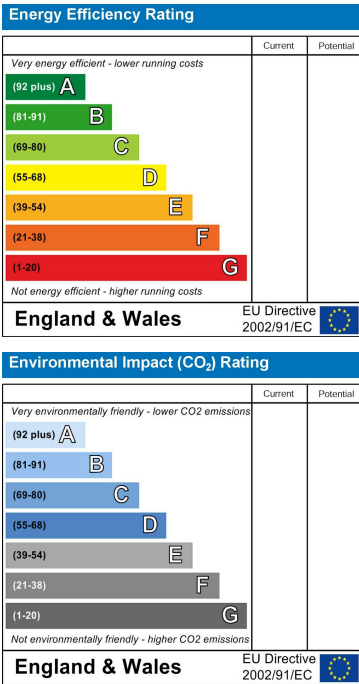
Floor Plan



Area Map



Energy Efficiency Graph



These particulars, whilst believed to be accurate are set out as a general outline only for guidance and do not constitute any part of an offer or contract. Intending purchasers should not rely on them as statements of representation of fact, but must satisfy themselves by inspection or otherwise as to their accuracy. No person in this firms employment has the authority to make or give any representation or warranty in respect of the property.