



RE/MAX

PROPERTY HUB



5 Glen Lyn Park Old Newton Road, Bovey Tracey, TQ13 9DT

Asking price £175,000

****CHAIN FREE**** - RE/MAX are delighted to present this charming and spacious Park Home situated in a peaceful location of Bovey Tracey. The property has been modernised throughout and comprises Kitchen, Living/Diner, Two Bedrooms, Shower Room, Parking and a Wrap-Around Patio. The property is being sold in immaculate condition.

Front Of The Property

Gated driveway parking for up to two vehicles. Two steps leading up to the side door to the Kitchen and the Main Entrance to another side.

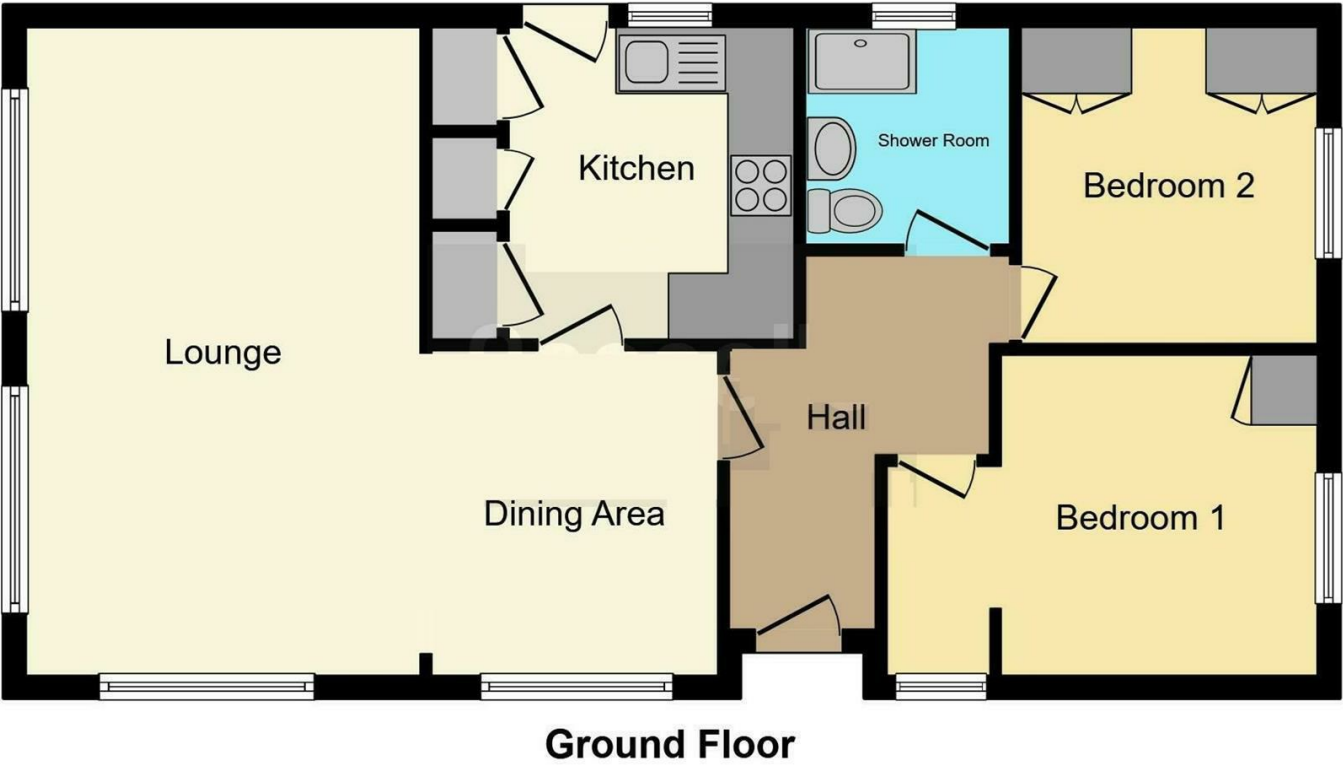
Entrance Hallway

Spacious Hallway leading to all main principle rooms.

Living / Dining Room 19' 3" max x 11' 8" max (5.87m max x 3.56m max)

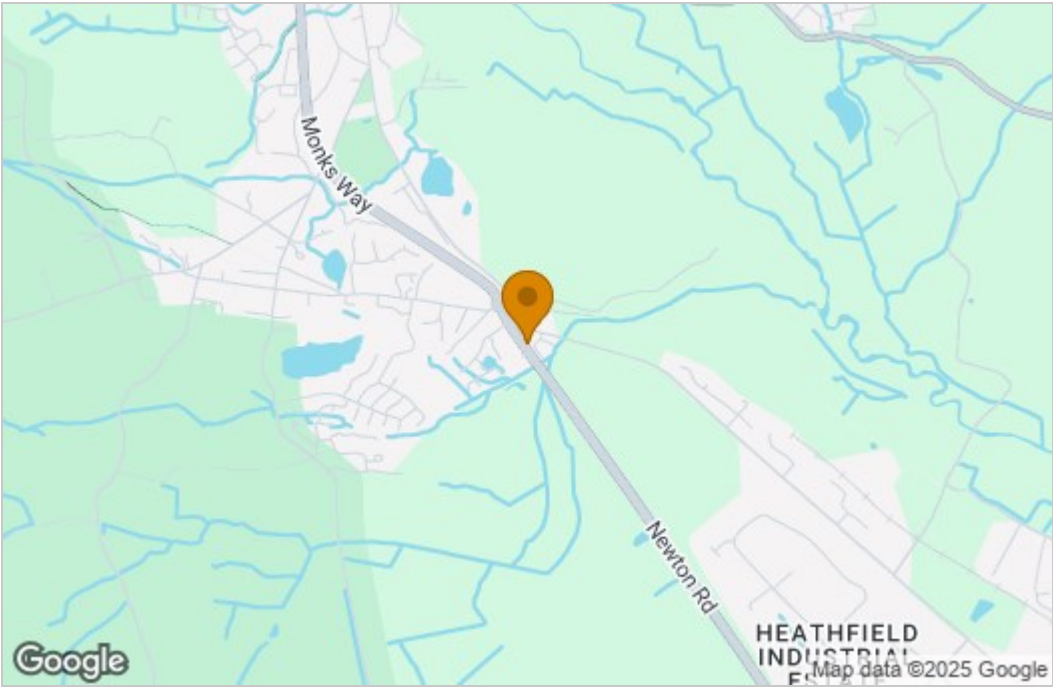
Large L-Shape Living/Dining Area with dual aspect double glazed windows to the front and side, wall mounted radiator and sliding patio doors leading to the side. Door leads into the Kitchen.

Floor Plan



This floorplan is for illustrative purposes only and is not drawn to scale. Measurements, floor-areas, openings and orientations are approximate. They should not be relied upon for any purpose and do not form any part of an agreement. No liability is taken for any error or mis-statement. All parties must rely on their own inspections.

Area Map



Energy Efficiency Graph

These particulars, whilst believed to be accurate are set out as a general outline only for guidance and do not constitute any part of an offer or contract. Intending purchasers should not rely on them as statements of representation of fact, but must satisfy themselves by inspection or otherwise as to their accuracy. No person in this firms employment has the authority to make or give any representation or warranty in respect of the property.