



RE/MAX

PROPERTY HUB



40 Thorley Drive, Cheadle, ST10 1SA
Asking price £160,000

Welcome to this charming bungalow located on Thorley Drive.

Situated in a tranquil neighbourhood, this bungalow offers a peaceful retreat, a serene environment for those seeking a quiet and idyllic place to call home.

Don't miss out on the chance to own this lovely bungalow in Cheadle. Contact us today to arrange a viewing and envision the potential this property holds for you and your loved ones.

Lounge 14'8" x 10'2" (4.48 x 3.10)

With window to the rear elevation and storage cupboard.

Kitchen 7'8" x 9'9" (2.34 x 2.99)

With a range of wall and base units and window to rear elevation.

Bedroom One 10'2" x 11'3" (3.11 x 3.44)

With built in wardrobes and window to the front elevation.

Bedroom Two 7'7" x 9'8" (2.32 x 2.97)

With window to the front elevation.

Bathroom 5'2" x 6'2" (1.58 x 1.89)

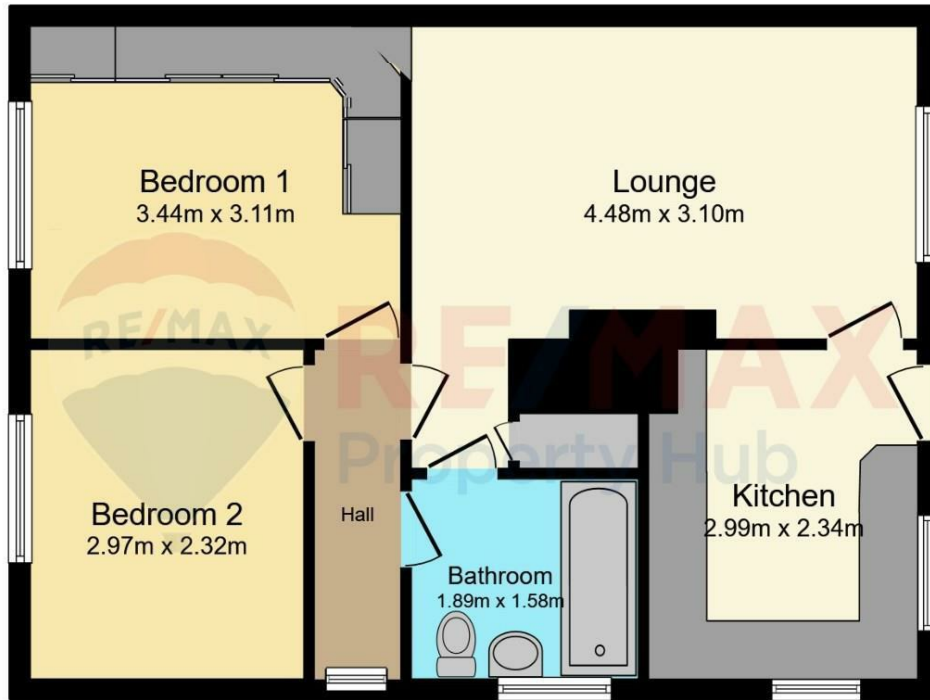
With window to the side elevation, comprises of W/C , Sink and Bath.

Outside

To the front of the property is an artificial lawned area, there is a also access to the driveway which runs along the side off the property.

At the rear of property is a slabbed section leading on to the lawn. There are fantastic views from the property.

Floor Plan

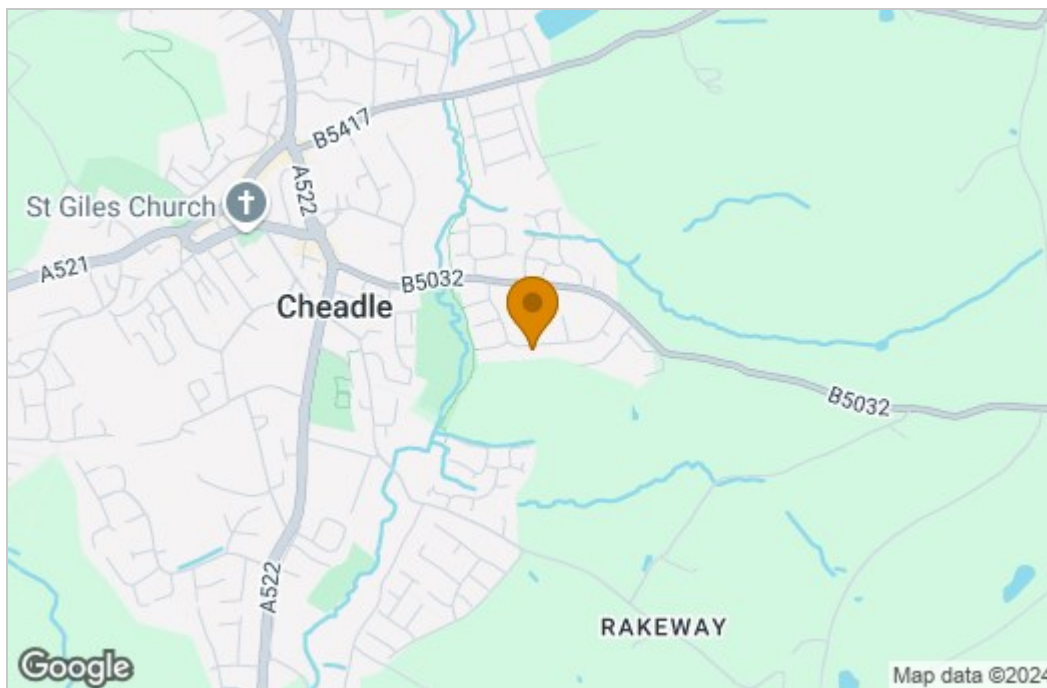


Floor Plan
Floor area 61.5 sq.m.

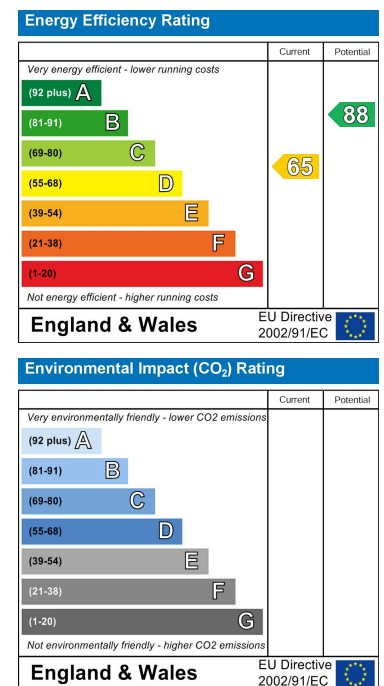
TOTAL: 61.5 sq.m.

This floor plan is for illustrative purposes only. It is not drawn to scale. Any measurements, floor areas (including any total floor area), openings and orientations are approximate. No details are guaranteed, they cannot be relied upon for any purpose and do not form any part of any agreement. No liability is taken for any error, omission or misstatement. A party must rely upon its own inspection(s). Powered by www.Propertybox.io

Area Map



Energy Efficiency Graph



These particulars, whilst believed to be accurate are set out as a general outline only for guidance and do not constitute any part of an offer or contract. Intending purchasers should not rely on them as statements of representation of fact, but must satisfy themselves by inspection or otherwise as to their accuracy. No person in this firm's employment has the authority to make or give any representation or warranty in respect of the property.