



RE/MAX

PROPERTY HUB



36 Cheltenham Drive, Birmingham, B36 8QG
No offers £170,000

RE/MAX are delighted to offer this three bedroom end terrace house located close to local amenities and transport links.

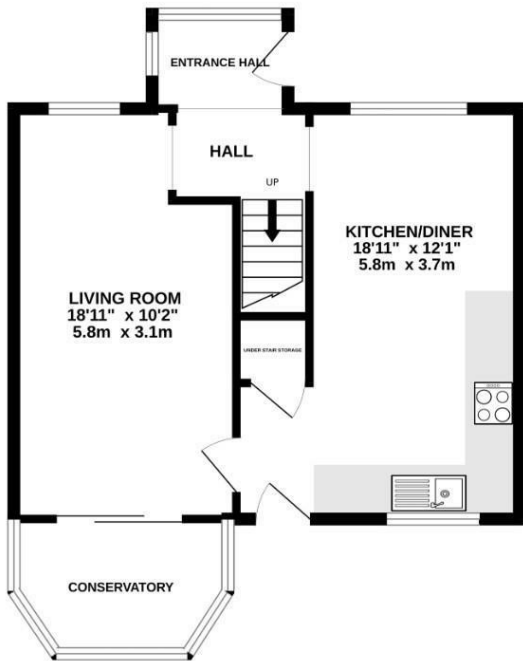
The property comprises of a lounge, fitted kitchen with dining area, conservatory, three bedrooms with all having fitted wardrobes, family bathroom and a separate W.C.

The property also benefits from having an enclosed rear garden.

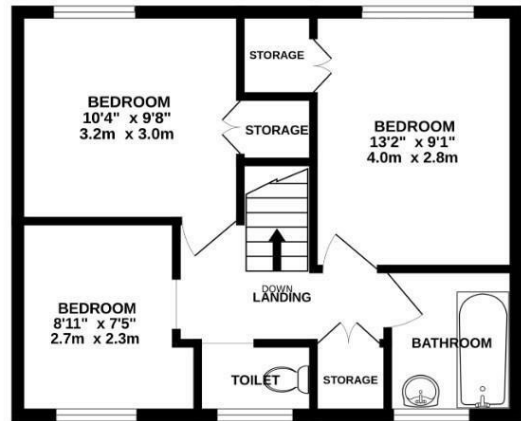
Please call or email to book in a viewing!

Floor Plan

GROUND FLOOR

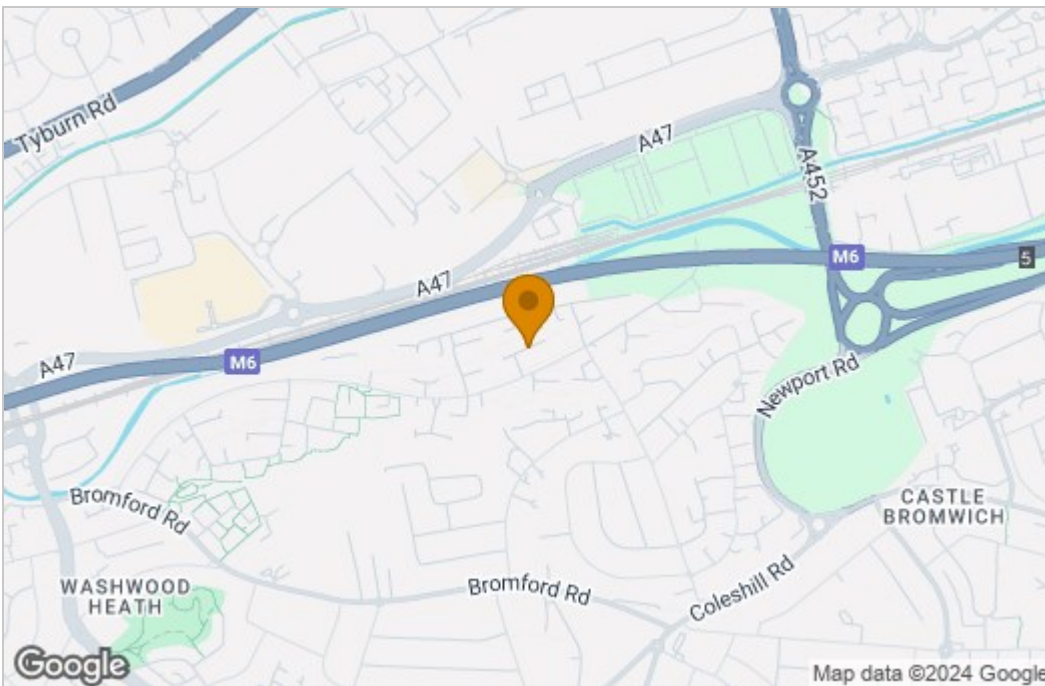


1ST FLOOR

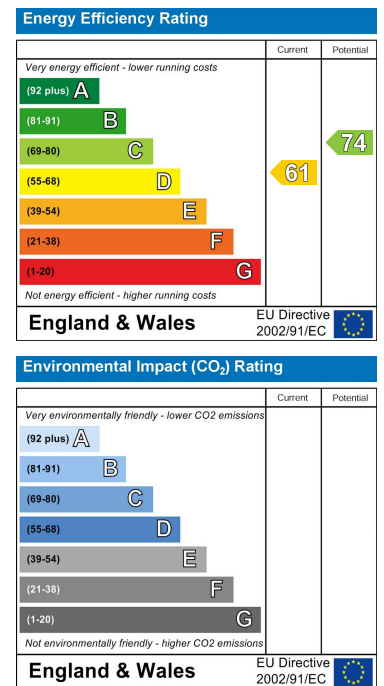


Whilst every attempt has been made to ensure the accuracy of the floorplan contained here, measurements of doors, windows, rooms and any other items are approximate and no responsibility is taken for any error, omission or mis-statement. This plan is for illustrative purposes only and should be used as such by any prospective purchaser. The services, systems and appliances shown have not been tested and no guarantee as to their operability or efficiency can be given.
Made with Metropix ©2024

Area Map



Energy Efficiency Graph



These particulars, whilst believed to be accurate are set out as a general outline only for guidance and do not constitute any part of an offer or contract. Intending purchasers should not rely on them as statements of representation of fact, but must satisfy themselves by inspection or otherwise as to their accuracy. No person in this firm's employment has the authority to make or give any representation or warranty in respect of the property.