



RE/MAX

PROPERTY HUB



20 Moor Lane, Plymouth, PL5 1UA

Asking price £210,000

Discover this beautifully presented 2-bedroom semi-detached bungalow, offering a perfect balance of modern design and cosy charm. Located just a short distance from St Budeaux Square, this home provides a tranquil setting with all the conveniences of urban living close by.

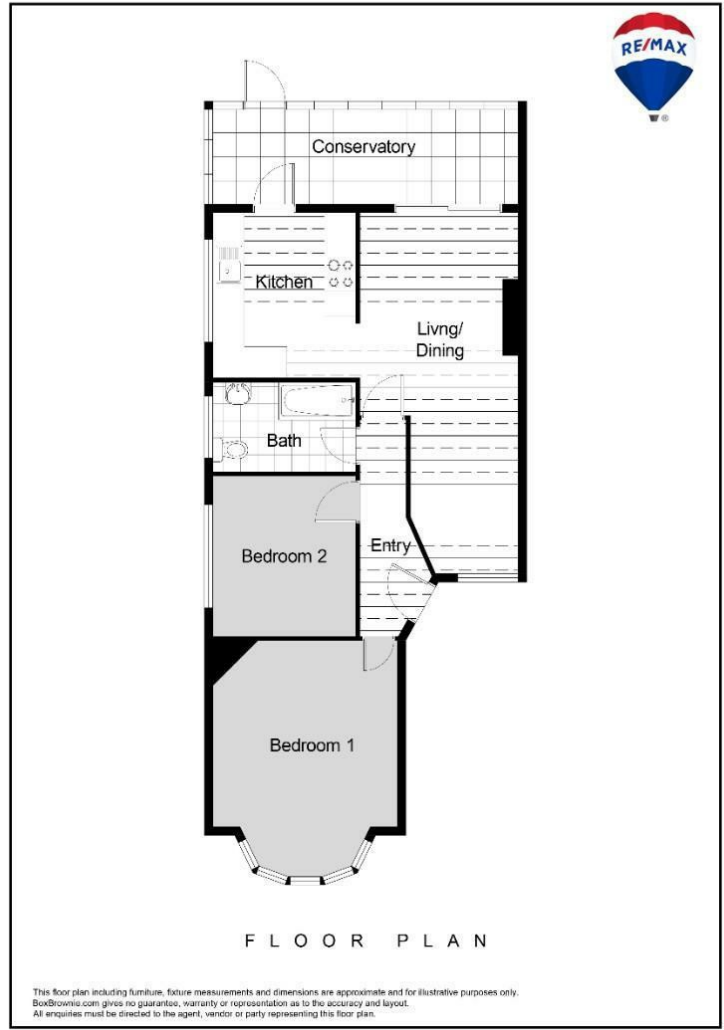
As you step inside, the welcoming atmosphere is immediate, with a bright entrance leading into a spacious lounge/dining area. The open-plan layout is ideal for both relaxing and entertaining, with large windows that allow plenty of natural light to flood the space. The room is perfect for quiet evenings or hosting friends, and its versatility ensures a comfortable living experience.

The bungalow features a conservatory that doubles as a utility area, offering extra storage and functionality. The conservatory opens onto the large garden, which is half lawned and half patio, giving you the perfect space to unwind or entertain outdoors. The garden is designed for easy maintenance while providing ample room for family activities or relaxation, complemented by the stunning views of the surrounding area.

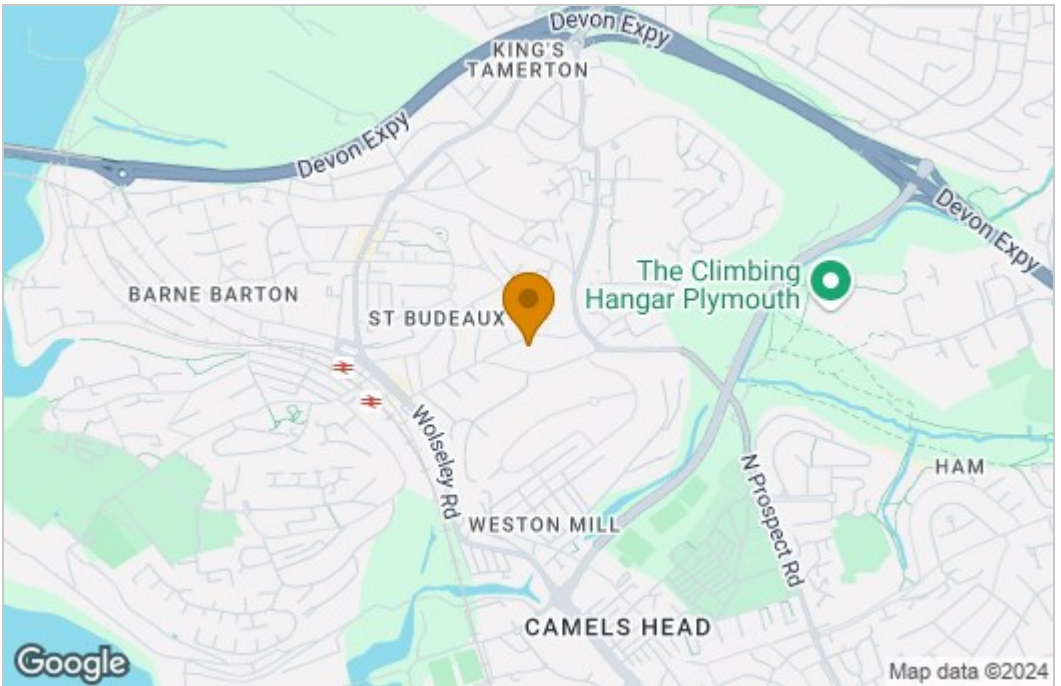
Parking is hassle-free with on-road spaces right outside, and the property's location is superb for those who need to commute, with excellent bus routes offering quick and easy access into town. St Budeaux Square is just a short walk away, where you'll find local shops, cafes, and services, making everyday errands convenient.

With its modern interiors, immaculate garden, and ideal location, this bungalow is perfect for small families, couples, or anyone looking to downsize without compromising on comfort and style. Arrange a viewing today to see how this property could be your next home!

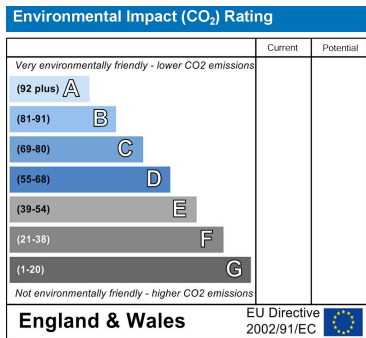
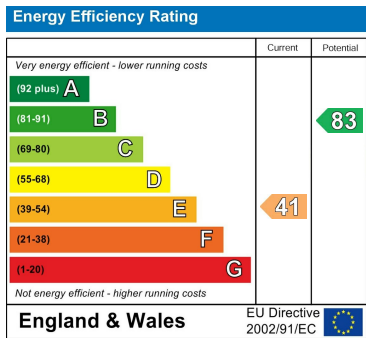
Floor Plan



Area Map



Energy Efficiency Graph



These particulars, whilst believed to be accurate are set out as a general outline only for guidance and do not constitute any part of an offer or contract. Intending purchasers should not rely on them as statements of representation of fact, but must satisfy themselves by inspection or otherwise as to their accuracy. No person in this firm's employment has the authority to make or give any representation or warranty in respect of the property.

10 King Street, Wolverhampton, West Midlands, WV1 1ST
 Tel: Email: tyler.copp@remax.co.uk remax.co.uk