



# RE/MAX

## PROPERTY HUB



## Barwood View Lower Warberry Road, Torquay, TQ1 1QP

### Asking price £250,000

This property is not only a perfect new home in Wellswood, it's also a proven holiday let which offers an attractive annual revenue. Don't miss the opportunity.

Experience coastal living with this stunning first floor apartment offering views of Torquay and a tranquil lifestyle.

This beautiful 2-bedroom apartment boasts spacious and large windows that flood the space with natural light.

The layout connects the modern living, dining reception room with a newly fitted kitchen and then you are led seamlessly through French doors from the lounge to your own private balcony. This is perfect for relaxing and entertaining all year-round. This standout feature is like an extension to the living area and makes it extra special. The modern kitchen area is fully equipped with high-end appliances and matching units. The dining/ lounge area is fresh and cool whilst relaxing with clever lighting and a modern feel. Both bedrooms are spacious rooms. The spacious bathroom is modern and contemporary.

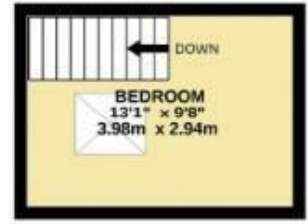
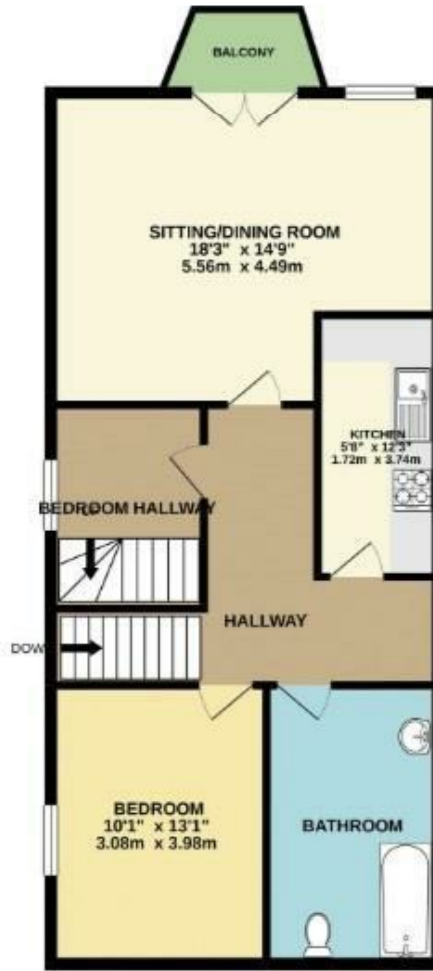
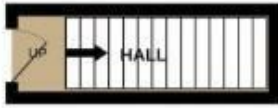
Set in the high-end area of Wellswood in Torquay, this home offers privacy and serenity, whilst being perfectly located for coastal living. Within walking distance to the town and the Torquay Marina which is dotted with an array local shops and restaurants. There are also excellent links to transport with access to regular bus services.

Please contact your RE/MAX agent for more details.

Don't miss the chance to call this coastal retreat your home.

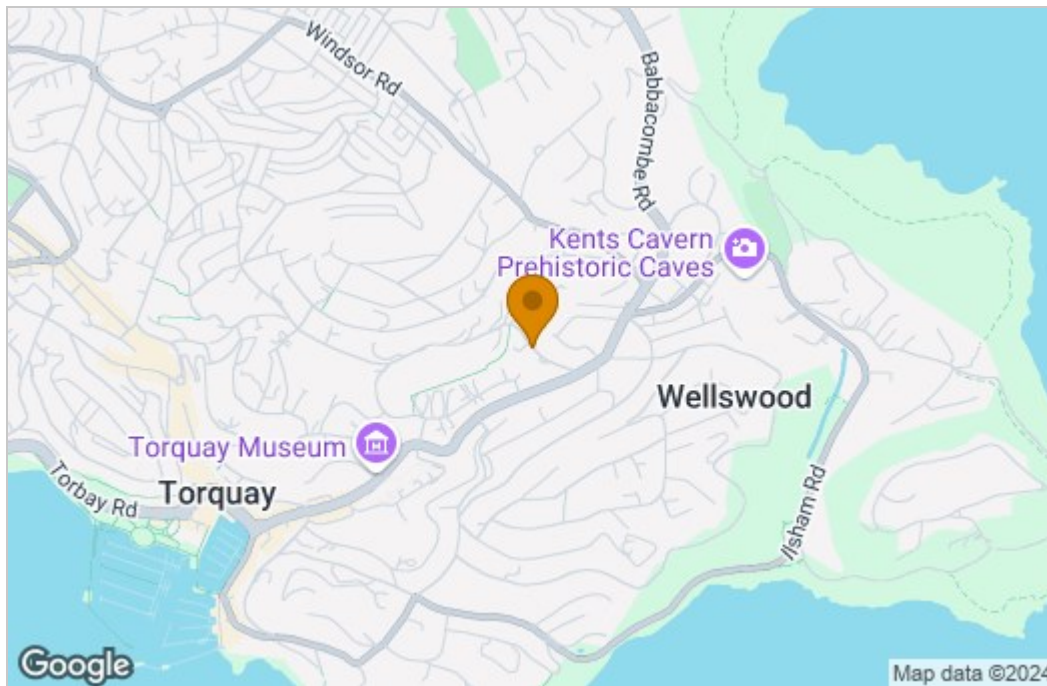


## Floor Plan

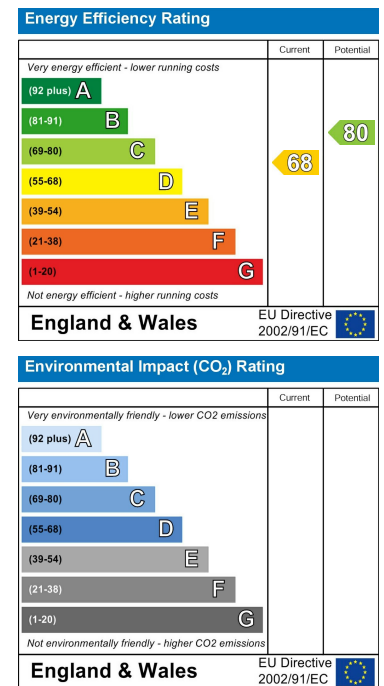


**RE/MAX**  
England & Wales

## Area Map



## Energy Efficiency Graph



These particulars, whilst believed to be accurate are set out as a general outline only for guidance and do not constitute any part of an offer or contract. Intending purchasers should not rely on them as statements of representation of fact, but must satisfy themselves by inspection or otherwise as to their accuracy. No person in this firm's employment has the authority to make or give any representation or warranty in respect of the property.

2 Reynell Road, Newton Abbot, Devon, TQ12 6YA  
Tel: +44 (0) 7925 823692 Email: lyndon.terry@remax.co.uk