



RE/MAX

PROPERTY HUB



2 Marine Park, Paignton, TQ3 2NW

Offers in excess of £490,000

Spacious Family Home in Prime Location Minutes From Beach

This exceptionally large family home is nestled in a quiet cul-de-sac, just a stone's throw from 2 beaches and local amenities. Enjoy easy access to coastal paths and the vibrant facilities of Paignton town centre. With nearby bus services and train stations, convenience is at your doorstep.

Flexible Living Spaces

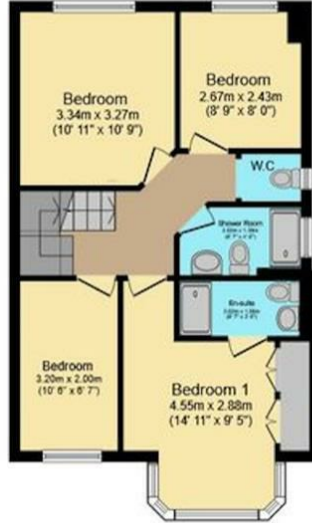
The property offers versatile living options for modern families, including dual family living and work-from-home solutions. The ground floor features a front reception room, a large through lounge/dining room, a kitchen with a utility room, and a family bathroom.

Ample Accommodation

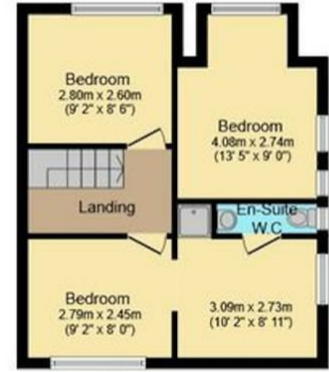
Floor Plan



Ground Floor



First Floor



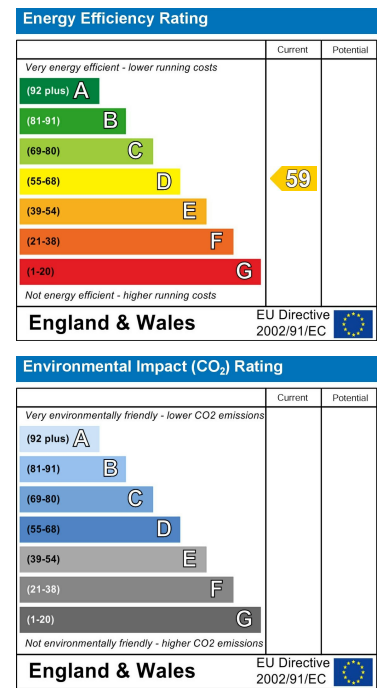
Second Floor

Total floor area 194.4 m² (2,093 sq.ft.) approx

Area Map



Energy Efficiency Graph



These particulars, whilst believed to be accurate are set out as a general outline only for guidance and do not constitute any part of an offer or contract. Intending purchasers should not rely on them as statements of representation of fact, but must satisfy themselves by inspection or otherwise as to their accuracy. No person in this firm's employment has the authority to make or give any representation or warranty in respect of the property.