



RE/MAX

PROPERTY HUB



9 Marguerite Way, Newton Abbot, TQ12 5HX

Asking price £315,000

****CHAIN FREE**** - RE/MAX are delighted to present this stunning 2 bedroom detached bungalow in the heart of Kingskerswell. This Detached Bungalow provides spacious accommodation throughout with delightful gardens and ample parking. Accommodation briefly comprises; Entrance Porch, Hallway, Living Room, Modern Kitchen, Dining Room, Modern Bathroom, 2 Double Bedrooms and Loft Room. There is ample parking with it's long driveway leading to the Garage and landscaped gardens to the front and rear, plus underhouse storage.

Accommodation

Entrance Porch

Hallway

Living Room (4.7m max x 4.28m)

Kitchen (3.31m x 2.90m)

French doors to;

Dining Room/Conservatory (2.74m x 2.18m)

Bedroom 1 (3.98m x 3.48m)

Bedroom 2 (3.52m x 2.93m)

Loft Room (3.89m x 2.84m)

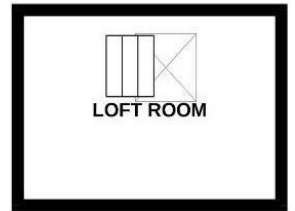
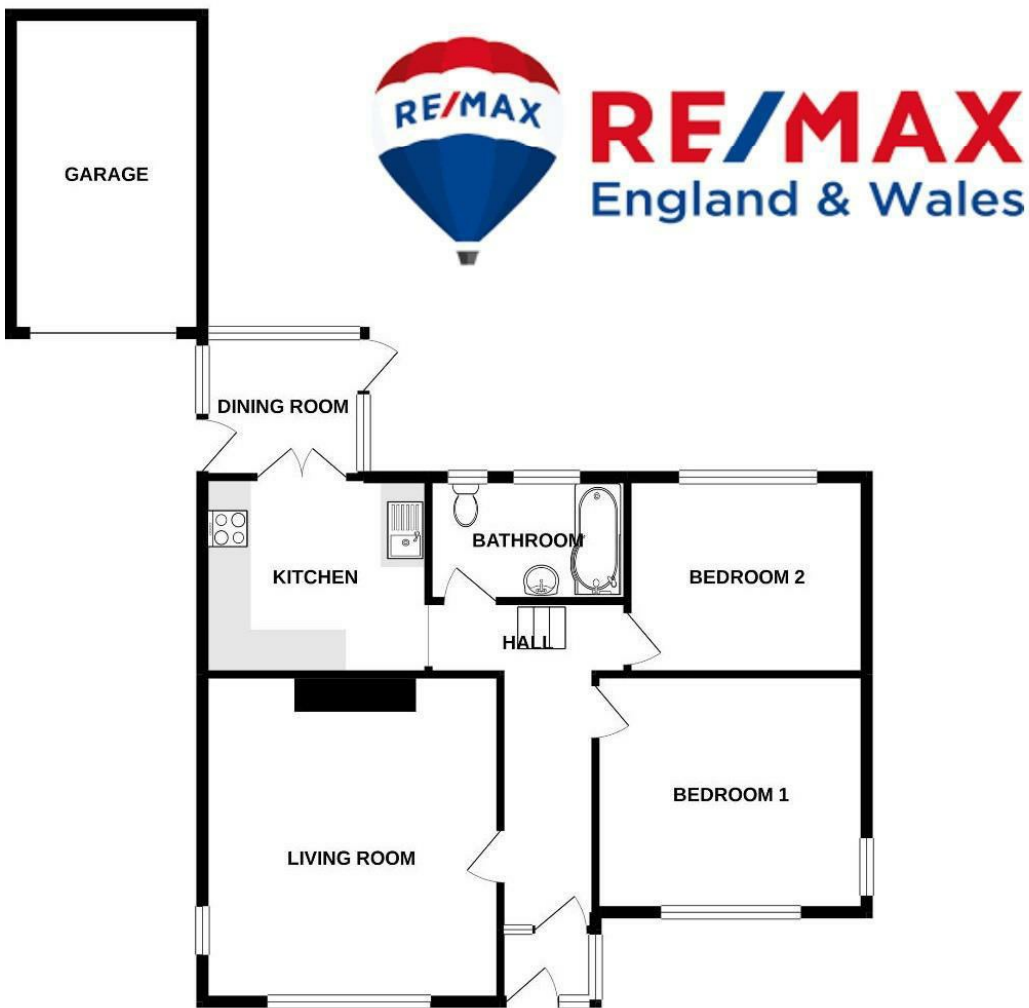
Bathroom (2.61m x 1.5.m)

Garage (4.72m x 2.82m)

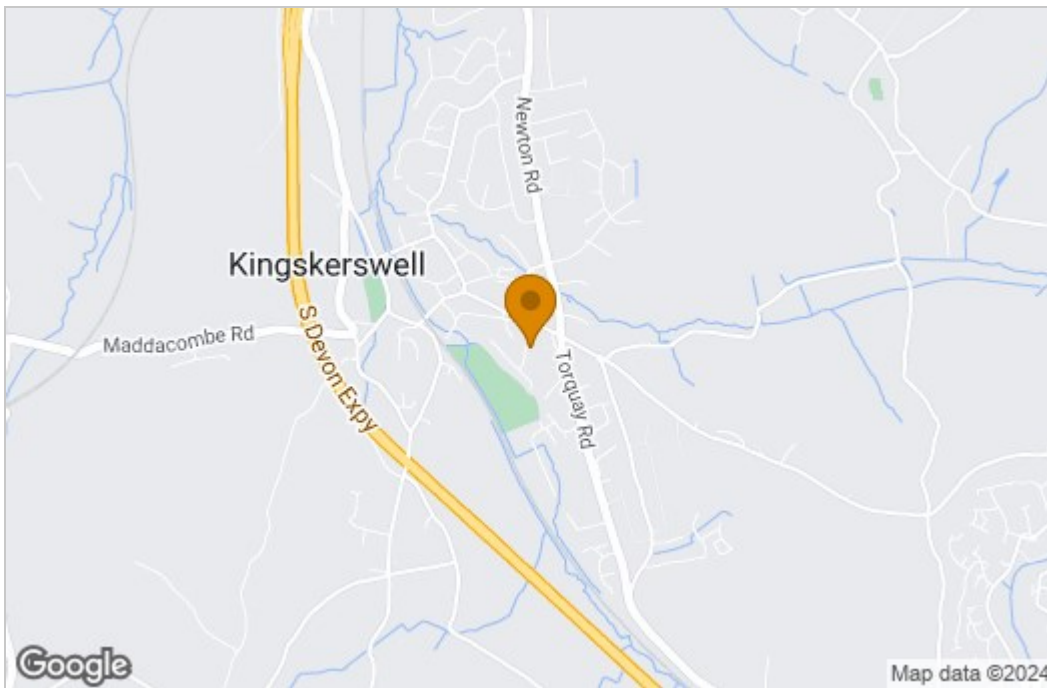
OUTSIDE Ample driveway parking leading up to the garage plus additional gravelled hardstanding. The front garden is landscaped, laid to stonechips with with stocked borders. Wooden gated access to the side. Access to underhouse storage (restricted head height).

The rear garden comprises a landscaped lawn and flowerbeds stocked with mature shrubs, with a patio area to the far corner. Views of the countryside.

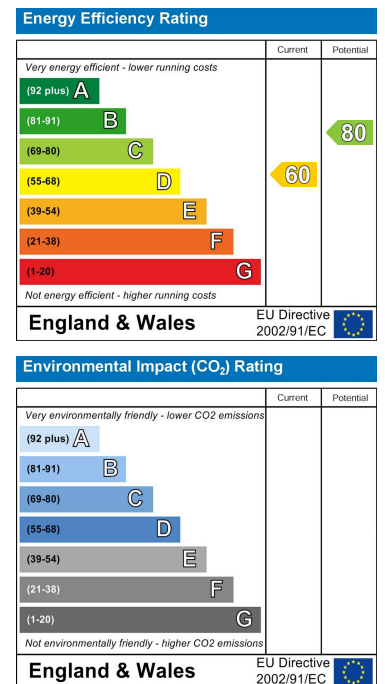
Floor Plan



Area Map



Energy Efficiency Graph



These particulars, whilst believed to be accurate are set out as a general outline only for guidance and do not constitute any part of an offer or contract. Intending purchasers should not rely on them as statements of representation of fact, but must satisfy themselves by inspection or otherwise as to their accuracy. No person in this firm's employment has the authority to make or give any representation or warranty in respect of the property.

2 Reynell Road, Newton Abbot, Devon, TQ12 6YA

Tel: 07850 038794 Email: ryan.flory@remax.uk <https://remax.uk/associates/Ryan%20Flory>