



RE/MAX

PROPERTY HUB



81 Courtland Road, Torquay, TQ2 6JS

Guide price £310,000

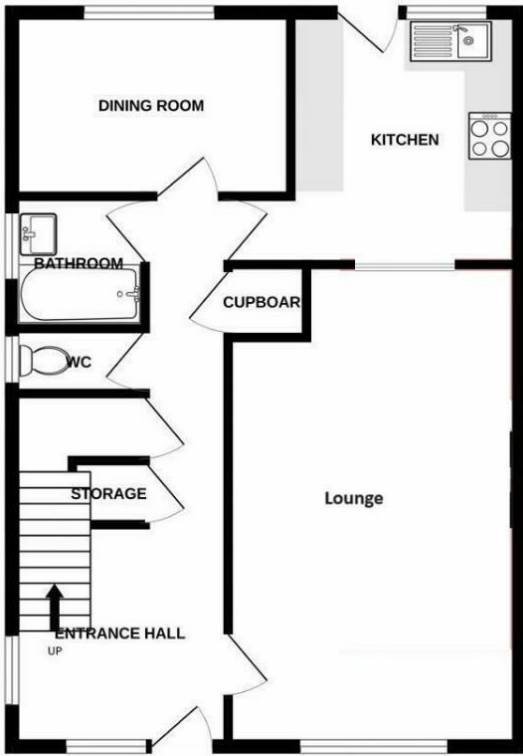
A beautiful well-lit Three/ four-bedroom home with elevated views across Torquay and nothing but greenery to the rear. This has to be one of Torbay's most favoured locations.

This home has an abundance of natural light which floods seamlessly throughout. The ground floor is well planned with a large hallway which incorporates a WC and separate bathroom connecting to a spacious living room with a fabulous view. To the rear of the house there is dining room (which could become a fourth bedroom) and a large stylish kitchen leading directly out to the rear garden.

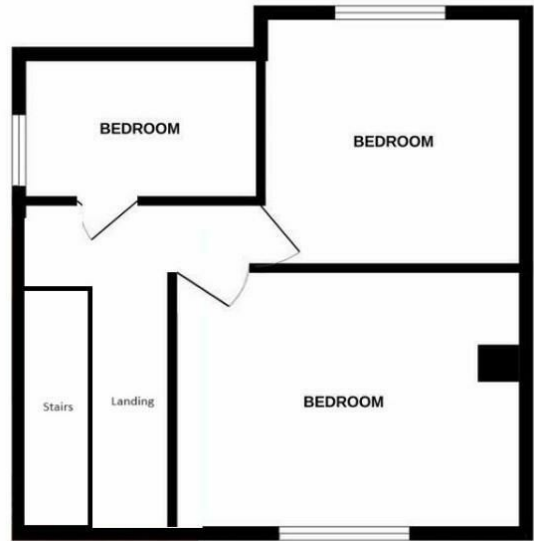
On the upper level we are greeted with a large beautifully lit landing leading on to two generous bedrooms and a third bedroom which could be extended.

Floor Plan

GROUND FLOOR



1ST FLOOR



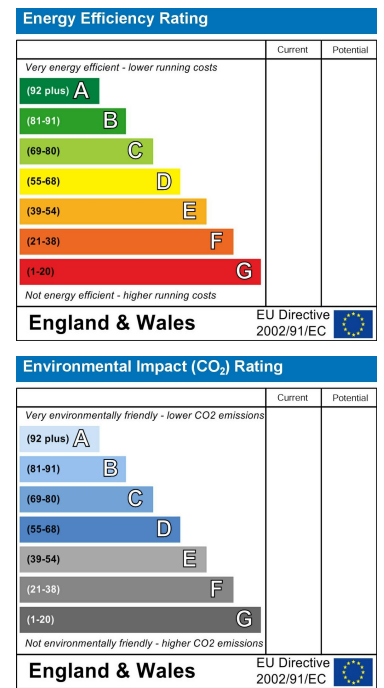
3 BEDS, 1 BATH, 2 FLOORS

Measurements are approximate. Not to scale. Illustrative purposes only. Made with Metropix ©2023

Area Map



Energy Efficiency Graph



These particulars, whilst believed to be accurate are set out as a general outline only for guidance and do not constitute any part of an offer or contract. Intending purchasers should not rely on them as statements of representation of fact, but must satisfy themselves by inspection or otherwise as to their accuracy. No person in this firm's employment has the authority to make or give any representation or warranty in respect of the property.

2 Reynell Road, Newton Abbot, Devon, TQ12 6YA
 Tel: +44 (0) 7925 823692 Email: lyndon.terry@remax.co.uk