



# RE/MAX

## PROPERTY HUB



### 3 New Park, Newton Abbot, TQ13 9FD

#### Offers over £200,000

RE/MAX are delighted to welcome to the market, this stunning 2 bedroom spacious park home on the highly sought-after New Park site in Bovey Tracey. Comprising entrance hall, good size lounge dining room, modern fitted kitchen, two double bedroom and a separate shower room. The master bedroom also benefits from an en-suite bathroom and dressing room. Outside access can be gained via a lift specifically designed for wheelchair users. There is a driveway with parking for two cars and a garage with power and light. Lawn gardens wrap around the property.

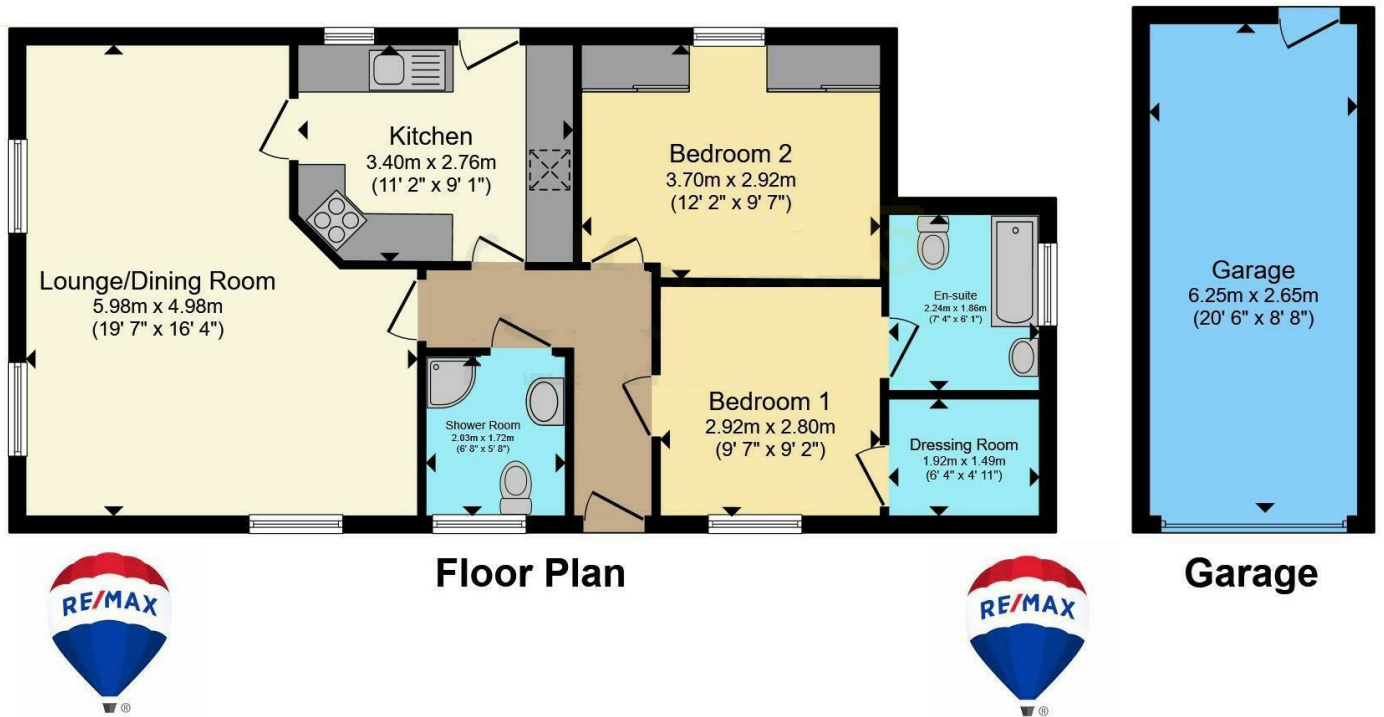
Bovey Tracey is a small town and is often referred to as 'The Gateway To The Moor'. It has a good range of local shops, pubs, eateries and church as well as a doctors surgery and a pharmacy. With good access to the A38 for Plymouth or Exeter. The thriving market town of Newton Abbot is only a short drive or bus ride away with further amenities including a mainline railway station.

Call now to view and avoid missing out on this lovely property.  
Agents Notes

Council Tax Band: A  
Pitch Fee: £180.30 pm



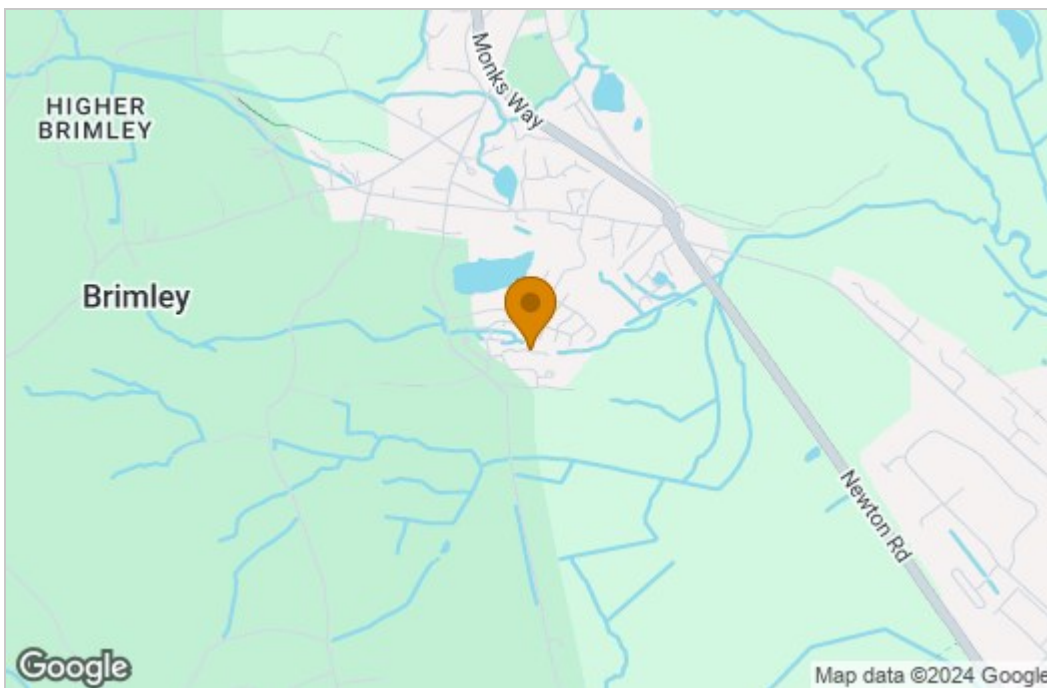
## Floor Plan



Total floor area 89.2 sq.m. (960 sq.ft.) approx

This floorplan is for illustrative purposes only and is not drawn to scale. Measurements, floor-areas, openings and orientations are approximate. They should not be relied upon for any purpose and do not form any part of an agreement. No liability is taken for any error or mis-statement. All parties must rely on their own inspections.

## Area Map



## Energy Efficiency Graph

These particulars, whilst believed to be accurate are set out as a general outline only for guidance and do not constitute any part of an offer or contract. Intending purchasers should not rely on them as statements of representation of fact, but must satisfy themselves by inspection or otherwise as to their accuracy. No person in this firm's employment has the authority to make or give any representation or warranty in respect of the property.

2 Reynell Road, Newton Abbot, Devon, TQ12 6YA

Tel: 07850 038794 Email: [ryan.flory@remax.uk](mailto:ryan.flory@remax.uk) <https://remax.uk/associates/Ryan%20Flory>