

STEART FARM

Make every house a home



Alliance
homes



**MODERN
LIVING IN
CHEDDAR**



STEART FARM, CHEDDAR

A new development of 2, 3 and 4 bedroom houses close to the centre of Cheddar.

Stearth Farm is a new community that's ideal for first-time buyers, growing families or those looking to enjoy living close to the country.

Get living with Shared Ownership at Stearth Farm.

ECO LIVING IN STYLE

Stear Farm has been designed to respect the environment, providing homes for both people and nature.

The large green open area on the site is both a haven for wildlife and a community play area. This, together with the green corridor around the homes, means local creatures can share the space whilst your little ones enjoy exploring.

Houses at Steart Farm are warm and easy to heat thanks to the latest eco-friendly technology and modern fittings. High levels of insulation and energy efficient, air-source heat pumps mean the homes are easy to live with.





MAKE YOURSELF AT HOME

WITH AN AMAZING SELECTION OF GREAT FEATURES, STEART FARM IS WAITING FOR YOU

In the area

- Easy walking distance of shops and other amenities
- Good schools for all ages nearby
- Excellent transport links for commuters
- Green open spaces on site
- Scenic Somerset on your doorstep with views of the Mendips and Cheddar Gorge

The homes

- Private parking
- Thoughtful interior layout
- Good size private gardens
- Eco-technology for lower bills
- Predicted EPC B
- Three exterior finishes; red brick, roughcast white render and grey recon stone.





YOUR NEXT MOVE

Homes at Steart Farm are available through Shared Ownership. To get started visit sales.alliancehomes.org.uk. You can then register for the latest updates or apply for a home.

With Shared Ownership you buy a share of an affordable home. You can choose how big a share to buy, but there is usually a minimum.

You then pay rent to Alliance Homes on the remaining share.

Later, you can choose to buy more shares and your rent will go down accordingly - this is known as staircasing.

To get a Shared Ownership home you must fit certain criteria and go through a process. We'll help guide you through this process.

Get started with Shared Ownership by visiting our website sales.alliancehomes.org.uk

STEART FARM



Shared Ownership homes colour key

-  Windsor
-  Knightsbridge
-  Hogarth
-  Rothway
-  Pixton



■ WINDSOR

The Windsor is a stunning three-bedroom family home arranged around a central staircase. One side of the ground floor features an open kitchen and dining area, with french doors leading out to the garden. On the other side, you'll find the family lounge with a bay window.

On the first floor are three bedrooms and the family bathroom. The main bedroom includes an en-suite. Each property benefits from allocated parking spaces.

- Roughcast render is available on plots 40 and 47.
- Grey recon stone is available on plot 1.

GROUND FLOOR

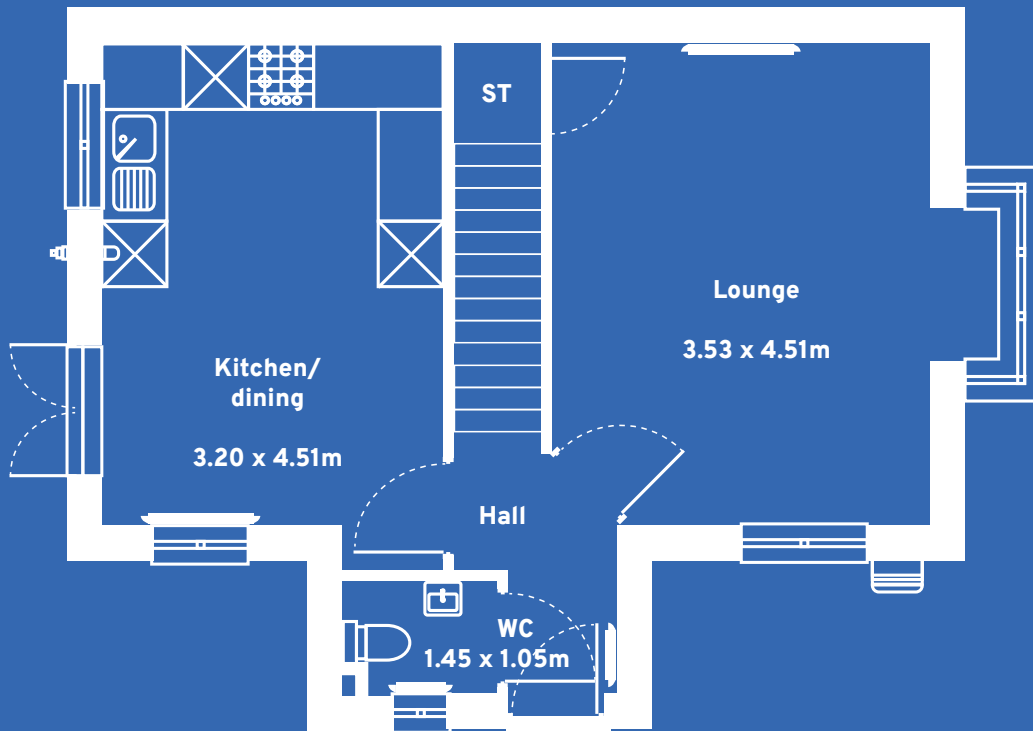
- Kitchen/ dining: 3.20 x 4.5m / 10'6" x 14'10"
- Lounge: 3.53 x 4.51m / 11'7" x 14'10"
- WC: 1.45 x 1.05m / 4'9" x 3'5"

FIRST FLOOR

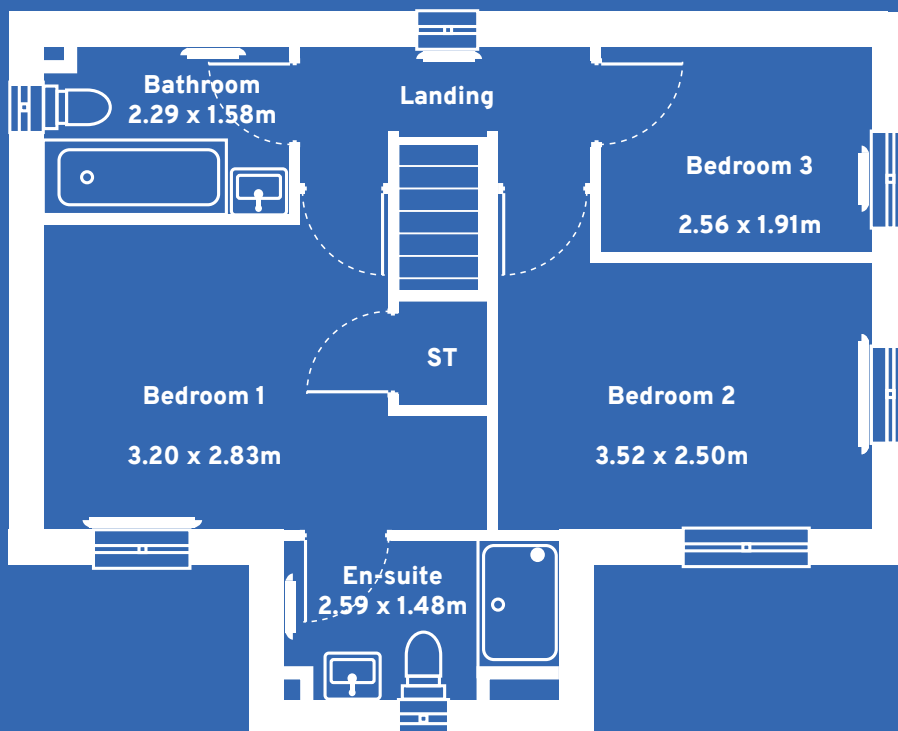
- Bathroom: 2.29 x 1.58m / 7'6" x 5'2"
- Bedroom 1: 3.20 x 2.83m / 10'6" x 9'3"
- Bedroom 2: 3.53 x 2.50m / 11'7" x 8'2"
- Bedroom 3: 2.56 x 1.91m / 8'5" x 6'3"
- En-suite: 2.59 x 1.48m / 8'6" x 4'10"



Please note that images and floor plans are for illustration purposes.



GROUND FLOOR



FIRST FLOOR

■ KNIGHTSBRIDGE

Designed for modern life, the Knightsbridge sets a new standard for three-bed homes.

On the ground floor you will find a good size lounge. Head towards the rear of the home, past the downstairs WC, and you will enter the kitchen and dining area with french doors leading straight on to the garden.

On the first floor, you'll find three bedrooms, family bathroom and storage cupboard. The main bedroom includes an en-suite.

This property also comes with allocated parking.

- Red brick is available on plot 39.
- Rough cast render is available on plots 4 and 5.
- Grey recon stone is available on plots 50, 51, 52 and 53.

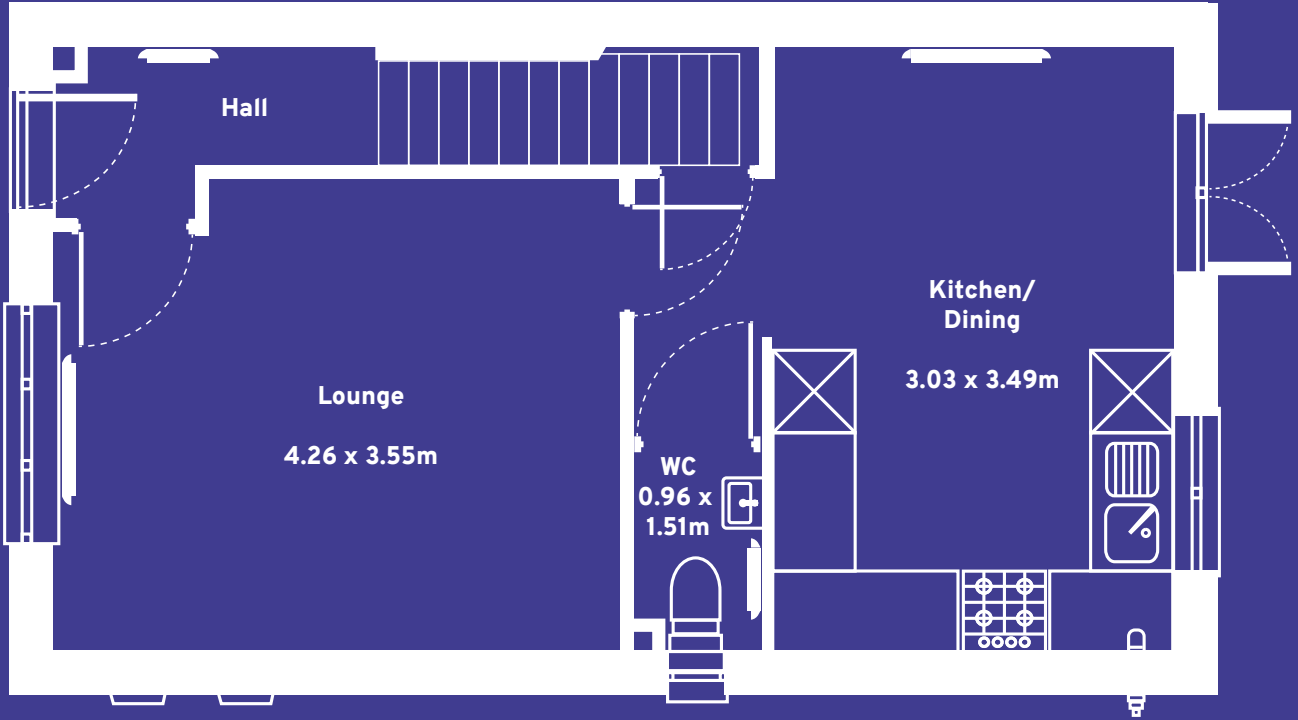
GROUND FLOOR

- Kitchen/ dining: 3.03 x 4.49m / 9'11" x 14'9"
- Lounge: 4.26 x 3.55m / 14'0" x 11'8"
- WC: 0.96 x 1.51m / 3'2" x 4'11"

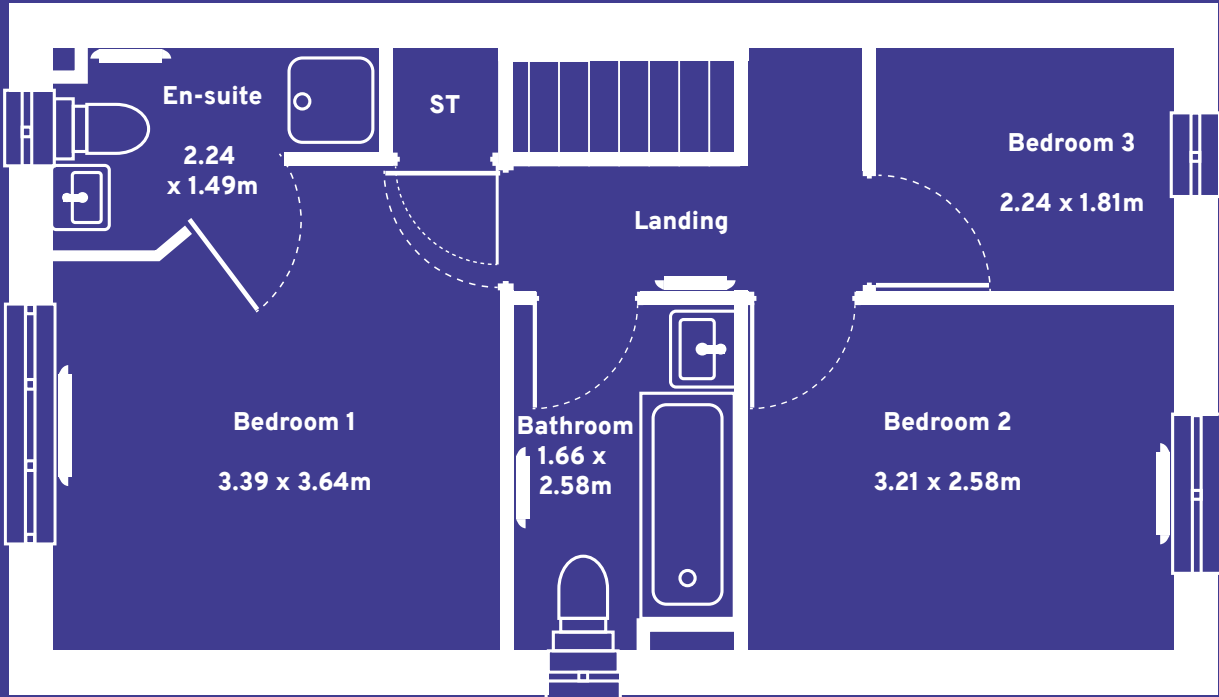
FIRST FLOOR

- Bathroom: 1.61 x 2.58m / 5'5" x 8'6"
- Bedroom 1: 3.39 x 3.64m / 11'1" x 12'0"
- Bedroom 2: 3.21 x 2.58m / 10'6" x 8'6"
- Bedroom 3: 2.24 x 1.81m / 7'4" x 6"
- En-suite: 2.24 x 1.49m / 7'4" x 4'11"





GROUND FLOOR



FIRST FLOOR

■ HOGARTH

The Hogarth three-bedroom home offers the best of modern and flexible living that can easily adapt to your needs.

On the ground floor, you're welcomed by a hallway and lounge. Following this you'll find the downstairs WC and a stunning kitchen and dining area with a glazed door providing access to the garden and lots of natural light.

Upstairs, you'll find three bedrooms and the family bathroom.

Each of these properties include private parking spaces.

- Red brick is available on plots 6, 7, 31 and 32.
- Rough cast render is available on plots 2, 3, 8, 9 and 17.

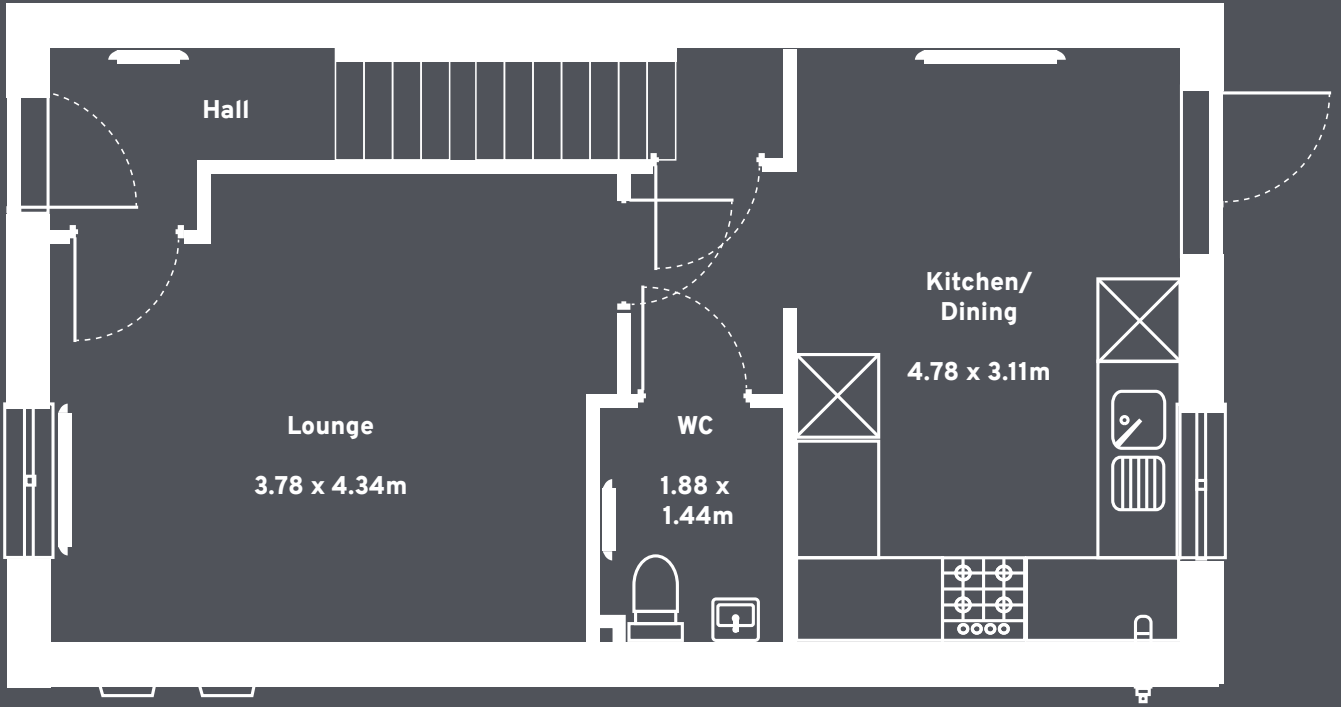
GROUND FLOOR

- Kitchen/ dining: 4.78 x 3.11m / 15'8" x 10'2"
- Lounge: 2.87 x 4.34m / 12'5" x 14'3"
- WC: 1.88 x 1.44m / 6'2" x 4'9"

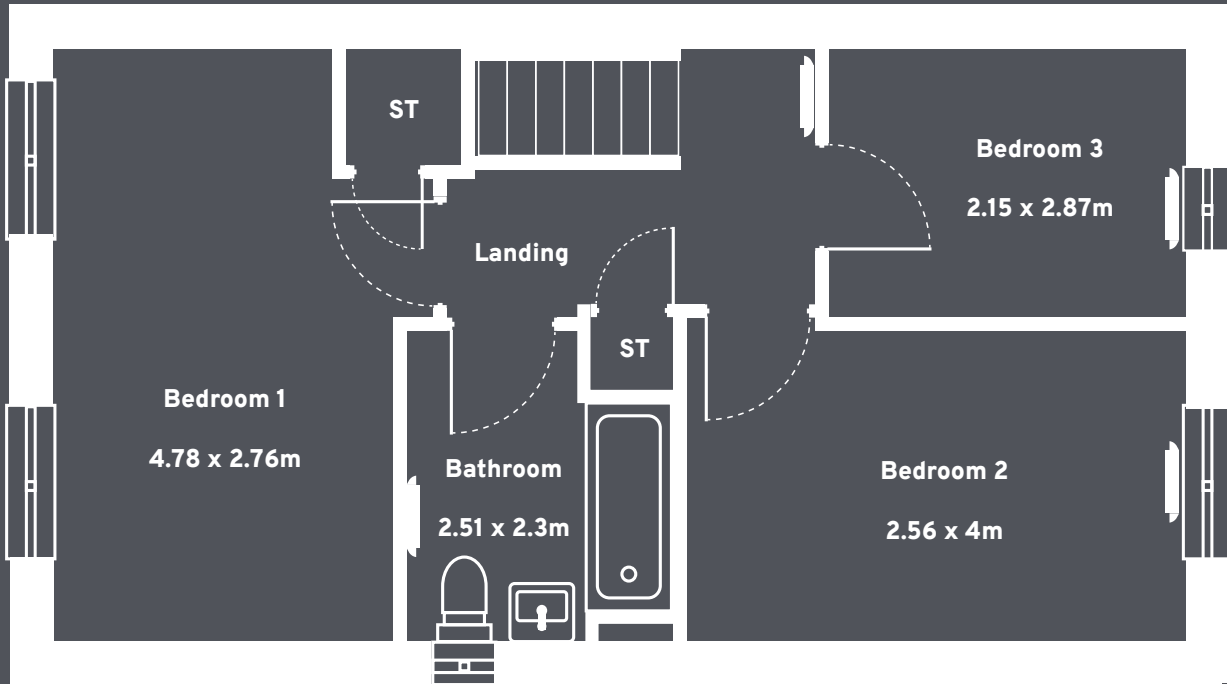
FIRST FLOOR

- Bathroom: 2.51 x 2.13m / 8'3" x 7'
- Bedroom 1: 4.78 x 2.76m / 15'8" x 9'1"
- Bedroom 2: 2.53 x 4m / 8'4" x 13'1"
- Bedroom 3: 2.15 x 2.87m / 7'1" x 9'5"





GROUND FLOOR



FIRST FLOOR

ROTHWAY

The Rothway boasts four bedrooms, an ensuite, kitchen and dining area as well as plenty of outdoor garden space.

The ground floor is all about getting together and socialising. You'll find the lounge, handy WC and the beautiful kitchen and dining area which spans the rear of the home and includes french doors, bringing the outdoors in.

With four bedrooms and a family bathroom on the first floor, there's space for everyone. The master bedroom includes an en suite and each of these properties include private parking spaces.

- The Rothway is available in grey recon stone exterior finish on plots 28, 43 and 58.

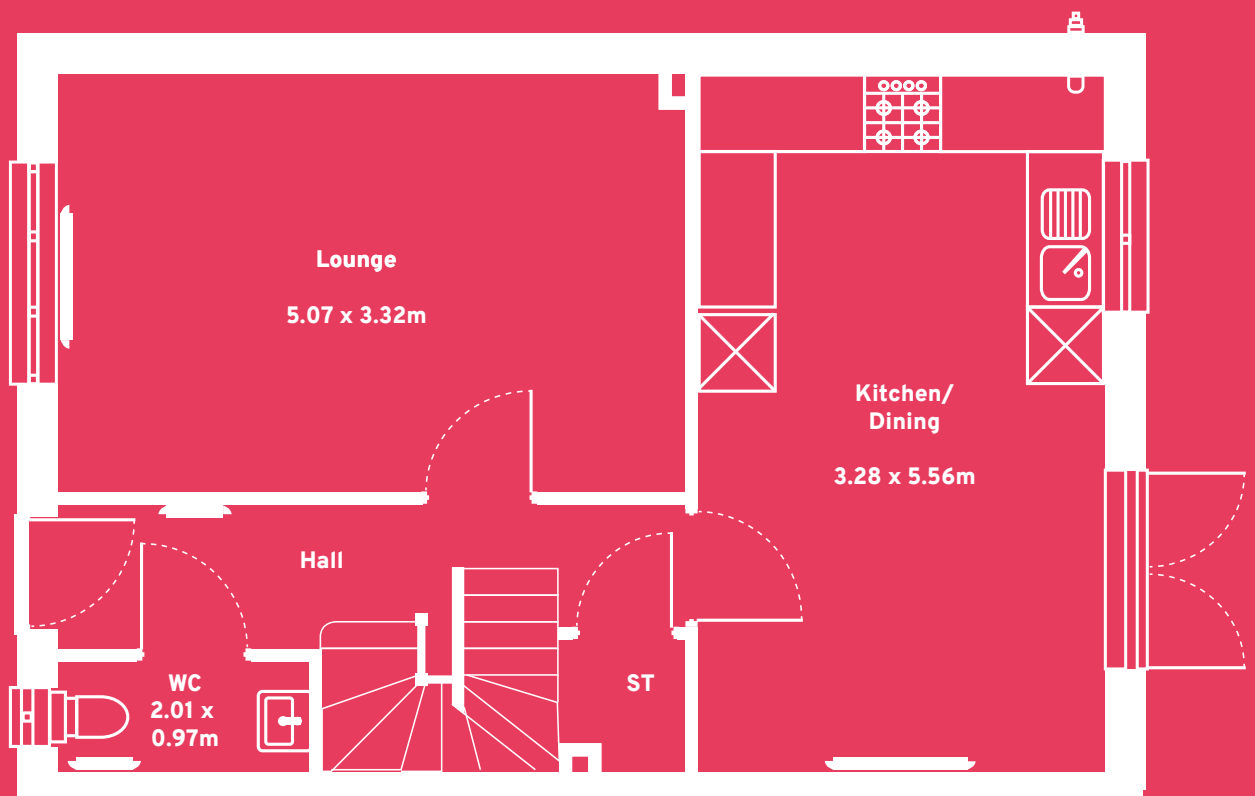
GROUND FLOOR

- Kitchen/ dining: 3.28 x 5.56m / 10'9" x 18'3"
- Lounge: 5.07 x 3.32m / 16'8" x 10'11"
- WC: 2.01 x 0.9 m / 6'7" x 3'0"

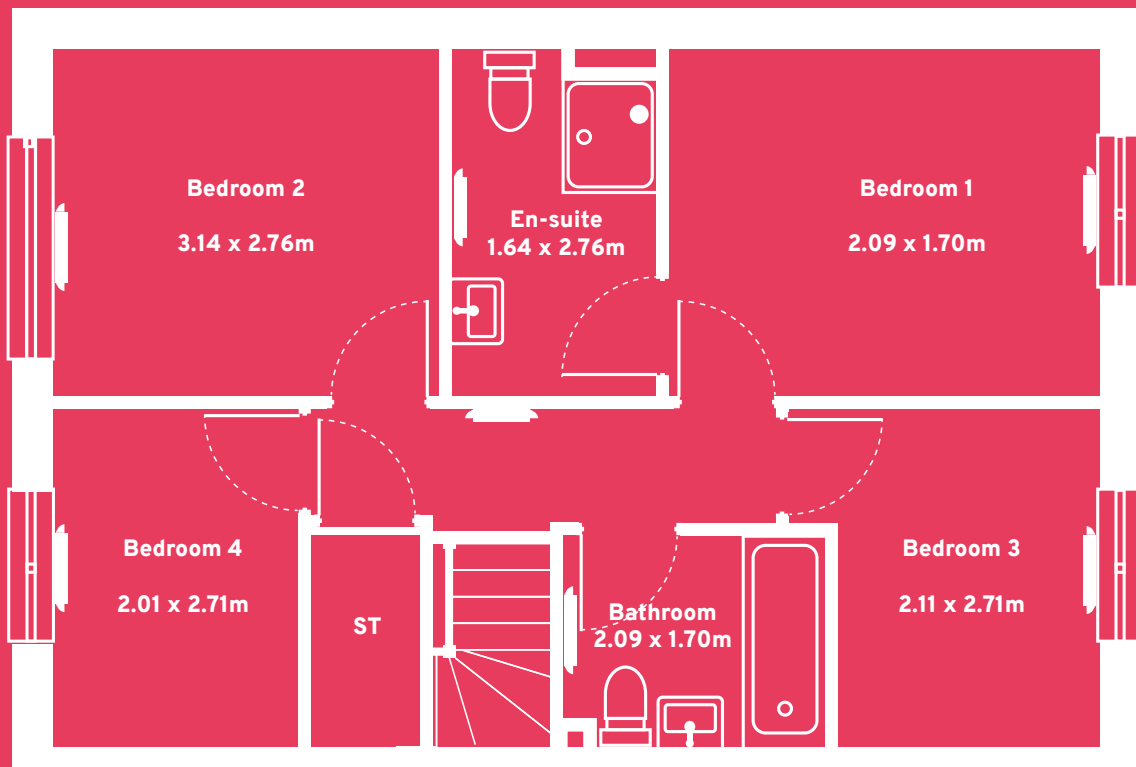
FIRST FLOOR

- Bathroom: 2.09 x 1.70m / 6'10" x 5'7"
- Bedroom 1: 3.46 x 2.76m / 11'5" x 9'1"
- Bedroom 2: 3.14 x 2.76m / 10'4" x 9'1"
- Bedroom 3: 2.11 x 2.71m / 6'11" x 8'11"
- Bedroom 4: 2.01 x 2.71m / 6'7" x 8'11"
- En suite: 1.64 x 2.76m / 5'5" x 9'1"





GROUND FLOOR



FIRST FLOOR

■ PIXTON

The Pixton is the perfect home for first-time buyers. The heart of this home is on the ground floor where you'll find a welcoming lounge, WC and contemporary kitchen and dining area that includes french doors, letting you make the most of the garden space.

Upstairs on the first floor you'll find the two bedrooms and the family bathroom. Each of these properties come with allocated private parking spaces.

- Red brick is available on plots 18, 33, 34 and 35.
- Grey recon stone is available on plots 54, 55 and 56.

GROUND FLOOR

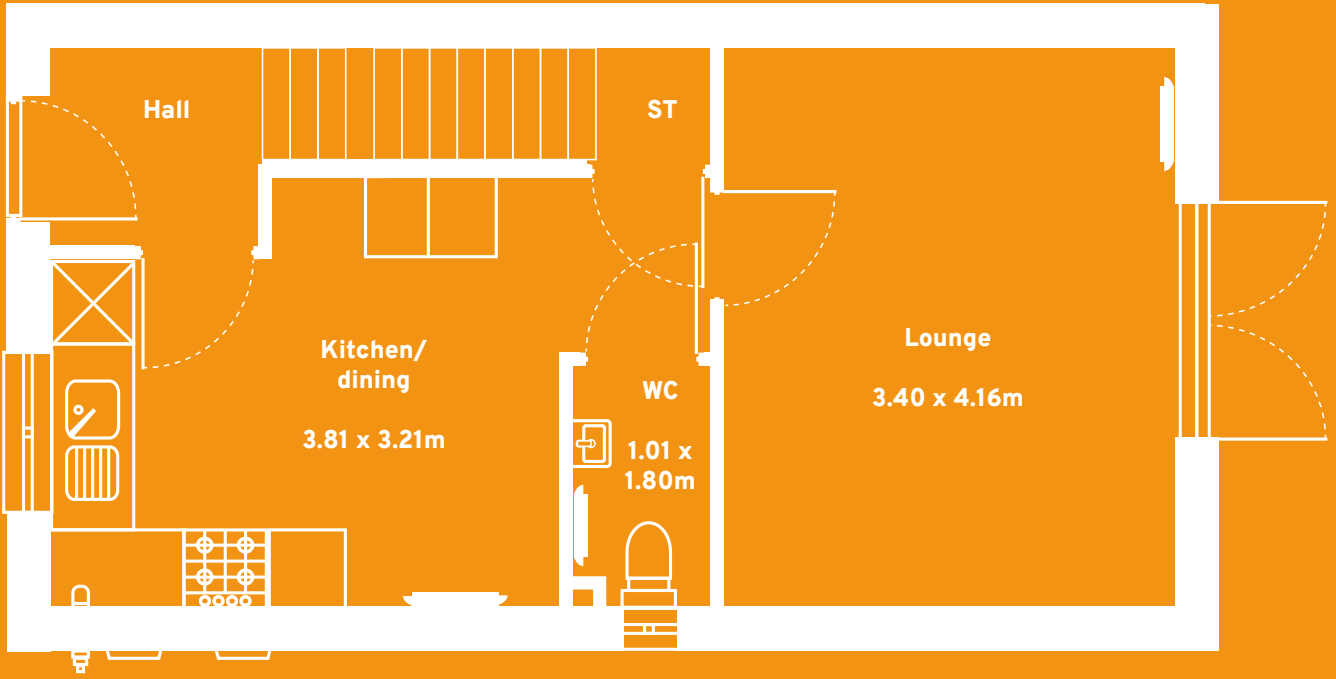
- Kitchen/ dining: 3.81 x 2.31m / 12'6" x 10'7"
- living room: 3.40 x 4.16m / 11'2" x 13'8"
- WC: 1.01 x 1.80m / 3'4" x 5'11"

FIRST FLOOR

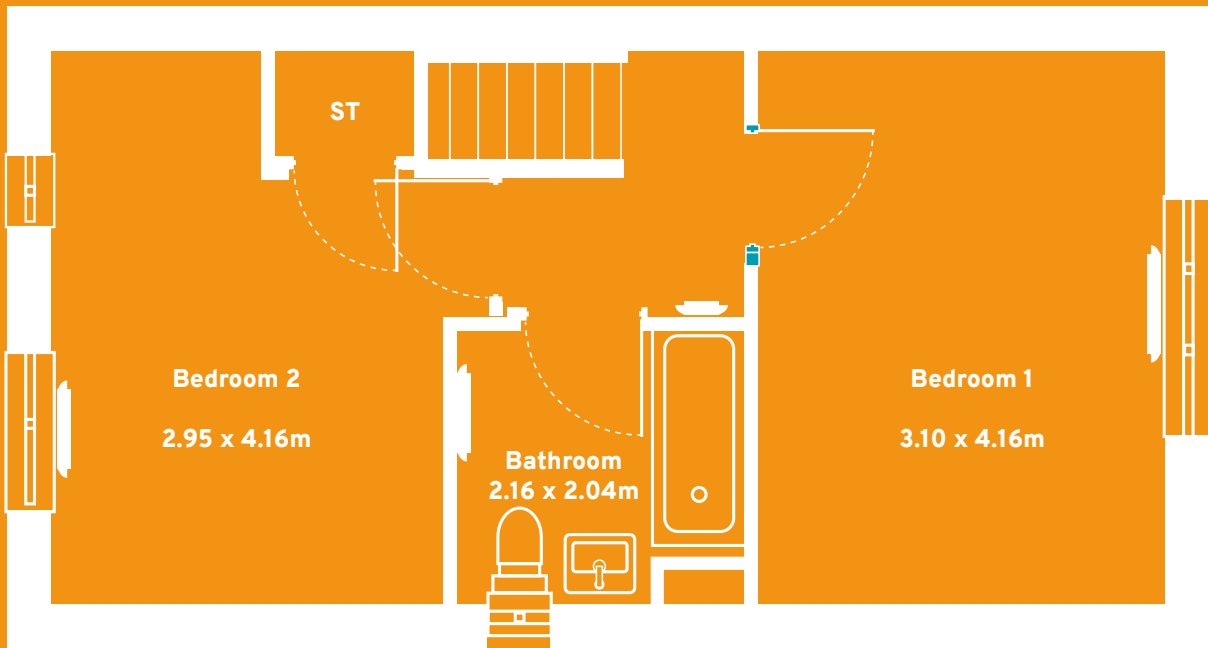
- Bathroom: 2.16 x 2.04m / 7'1" x 6'8"
- Bedroom 1: 3.10 x 4.16m / 10'2" x 13'8"
- Bedroom 2: 2.95 x 4.16m / 9'8" x 13'8"



Please note that images and floor plans are for illustration purposes.



GROUND FLOOR



FIRST FLOOR



sales@alliancehomes.org.uk
03000 120 120
sales.alliancehomes.org.uk/
40 Martingale Way, Portishead, BS20 7AW

