



JAPAN LETTING AGENCY



5 Electric Boulevard, SW11

£5,248



2



2



1



B

Council
Tax Band G

Contemporary Flat in Battersea – Modern Living in a New Development

Available from 18th September, this spacious flat in the newly developed area around Battersea Power Station offers a sophisticated urban lifestyle with top-notch amenities and an unbeatable location.

Key Features:

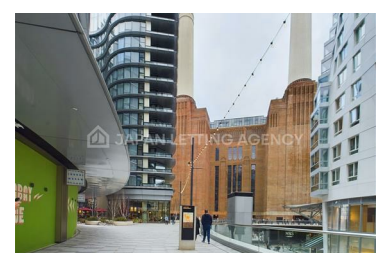
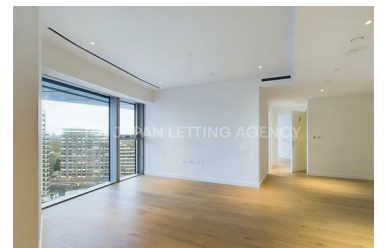
- Energy Performance Certificate (EPC): B.
- Council Tax: Wandsworth, Band G.
- Size: 1065.63 sqft / 99 sqm.
- Layout: 2 bedrooms, 2 bathrooms, and 1 balcony.
- Location: Just a 6-minute walk to the iconic Battersea Power Station, with Marks & Spencer and a variety of cafes, pubs, and restaurants only 2 minutes away.
- Parking: No underground parking is available.
- Furnishing: Available unfurnished, giving you the freedom to personalise your space.

Exclusive Amenities:

- Enjoy the comfort of floor heating throughout the flat, ensuring a warm and cozy environment all year round.
- Access to a sky lounge, cinema area and gym, providing entertainment options within your building.
- A rooftop garden offers breathtaking views of London, perfect for relaxation and social gatherings.
- This property is part of a very modern development in the Battersea Power Station area, known for its blend of historical charm and contemporary living. The flat itself is designed with modern living in mind, featuring floor heating and access to exclusive building amenities that enhance the quality of life.

Note: This flat is ideally suited for professionals or families looking for a high standard of living in one of London's most exciting new developments.

Don't miss out on this opportunity to live in a modern, well-appointed flat in a vibrant new development. Schedule a viewing today to experience the best of contemporary London living.



8 Station Parade, Uxbridge Road, London W5 3LD
+44 (0)20 8993 6100 | hello@japanlet.com | www.japanlet.com
JAPAN AT UK LIMITED t/a Japan Letting Agency

Ref: 18779157