

BURGIN ATKINSON

& C O M P A N Y



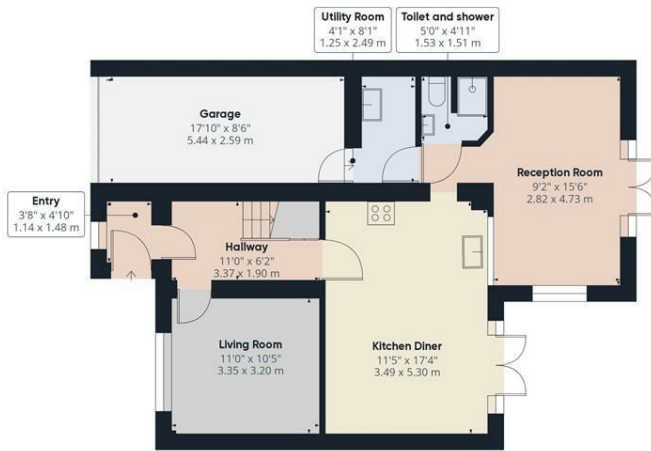
2 Holly Court, Retford, DN22 6BG

This very well presented 4-bedroom detached property located on Holly Court is now available to let. The accommodation comprises to the ground floor of Entrance Porch, Hallway, Living Room, Modern Kitchen Diner, Utility Room, Family Room and Downstairs Shower Room. Whilst to the first floor there are Three Double Bedrooms - Master with En-Suite, One Single Bedroom and a Family Bathroom. Externally the property benefits from an Enclosed Rear Garden with Patio and Grassed area to the rear, with Off Road Parking and Garage to the front. The property is ideally located with easy access to the town centre, local amenities.

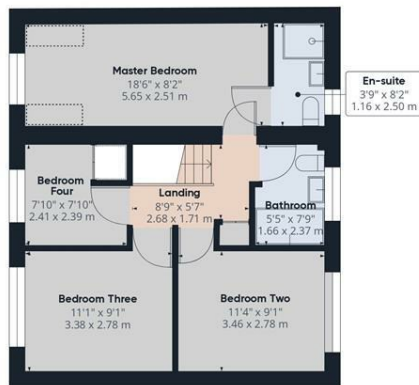
Holding Deposit £275.00 Bond £1380.00

- 4 Bedroom detached home
- 3 Bathrooms
- 3 reception rooms
- Sought after location
- No Chain
- Well presented
- Off street parking and garage
- EPC - C

£1,200



Ground Floor



Floor 1



Approximate total area^m

1338.82 ft²
124.38 m²

Reduced headroom

13.83 ft²
1.29 m²

(1) Excluding balconies and terraces

Reduced headroom (below 1.5m/4.92ft)

While every attempt has been made to ensure accuracy, all measurements are approximate, not to scale. This floor plan is for illustrative purposes only.

GIRAFFE360

