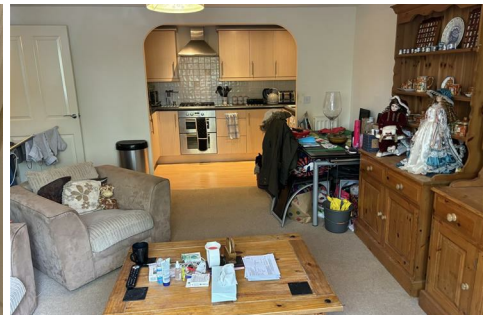


BURGIN ATKINSON

& C O M P A N Y



33 Mill Bridge Close, Retford, Nottinghamshire, DN22 6FE

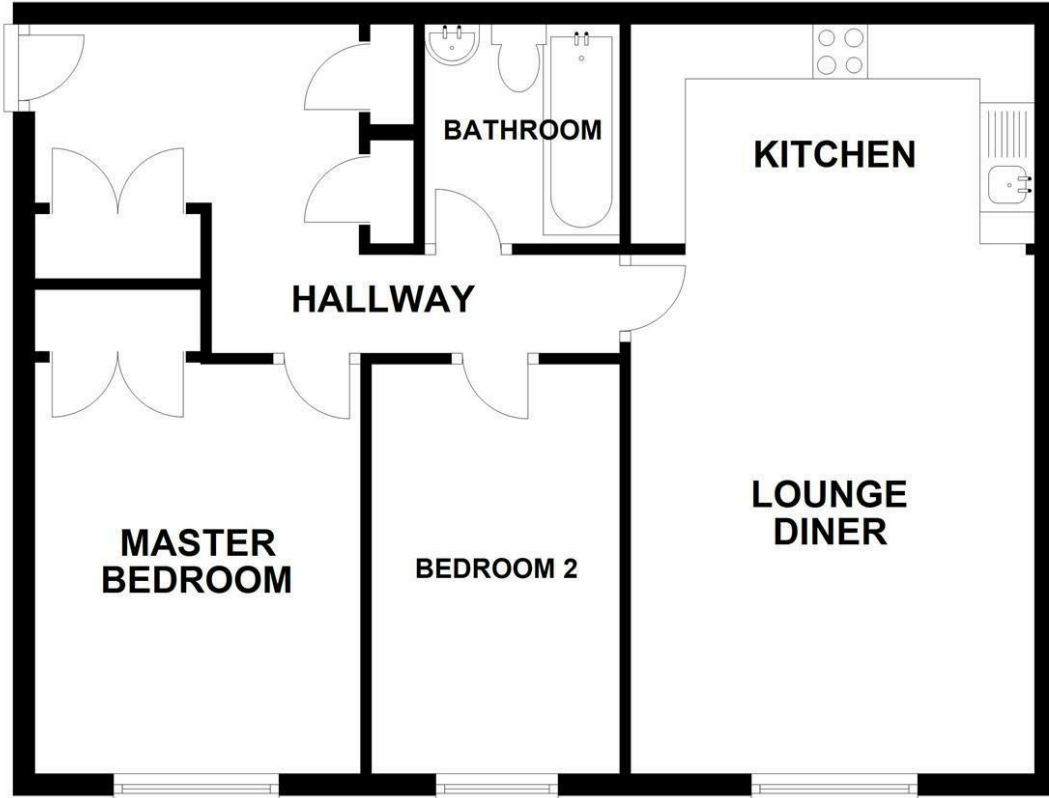
We are pleased to bring to the market this Ground floor 2 Bedroom apartment within close proximity to the train station and local amenities. The property comprises of 2 Bedrooms, Lounge, Kitchen with integrated appliances and Bathroom, The property benefits from intercom entry system, gas central heating and allocated parking space.

- 2 Bedroom Ground Floor Apartment
- Open Plan Living Space and Kitchen
- 2 Double Bedrooms
- 3 Piece Suite Bathroom
- Allocated Parking
- EPC - C

£90,000

GROUND FLOOR

APPROX. 58.6 SQ. METRES (630.4 SQ. FEET)



TOTAL AREA: APPROX. 58.6 SQ. METRES (630.4 SQ. FEET)

Energy Efficiency Rating		Current	Potential
Very energy efficient - lower running costs			
(92 plus) A			
(81-91) B		83	86
(69-80) C			
(55-68) D			
(39-54) E			
(21-38) F			
(1-20) G			
Not energy efficient - higher running costs			
England & Wales		EU Directive 2002/91/EC	

Environmental Impact (CO ₂) Rating		Current	Potential
Very environmentally friendly - lower CO ₂ emissions			
(92 plus) A			
(81-91) B		82	85
(69-80) C			
(55-68) D			
(39-54) E			
(21-38) F			
(1-20) G			
Not environmentally friendly - higher CO ₂ emissions			
England & Wales		EU Directive 2002/91/EC	