

BURGIN ATKINSON

& C O M P A N Y

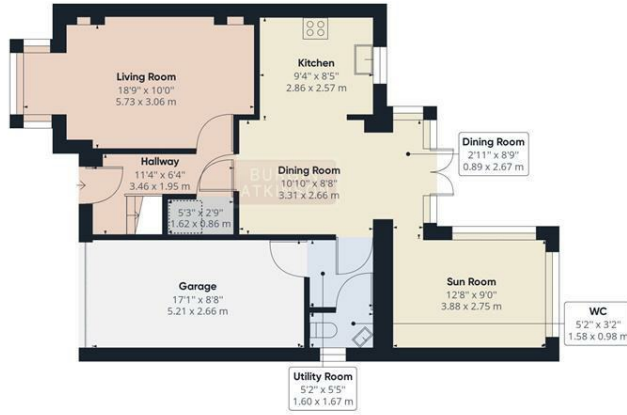


34 Edgbaston Drive, Retford, DN22 7HN

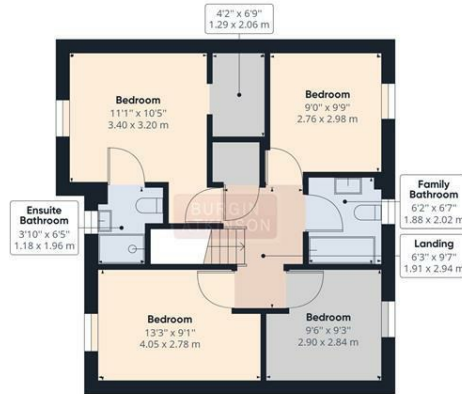
BEAUTIFULLY PRESENTED FOUR BEDROOM DETACHED HOUSE WITH SUN ROOM EXTENSION - MASTER ENSUITE AND WALK IN WARDROBE - RECENTLY FITTED KITCHEN/DINING ROOM WITH QUARTZ WORKTOPS OVER - INTEGRATED FRIDGE/FREEZER AND DISHWASHER - SOLAR PANELS - DOUBLE DRIVEWAY LEADING TO AN INTEGRAL GARAGE WITH ELECTRIC UP AND OVER DOOR. GARDENS FRONT AND REAR - POPULAR RESIDENTIAL AREA - CLOSE TO SHOPS AND AMENITIES - WALKING DISTANCE TO LOCAL PRIMARY SCHOOL - RETFORD MAIN LINE STATION WITH REGULAR TRAINS TO LONDON KINGS CROSS - VIEWING ADVISED.

- BEAUTIFULLY PRESENTED FOUR BEDROOM DETACHED HOUSE
- SUN ROOM EXTENTION
- MASTER BEDROOM WITH WALK IN WARDROBE & EN-SUITE
- SOLAR PANELS
- INTEGRATED APPLIANCES
- FULLY ENCLOSED REAR GARDEN & PATIO AREA
- DOUBLE DRIVEWAY WITH PARKING FOR SEVERAL CARS
- INTEGRAL GARAGE, CLOSE TO SHOPS & AMENITIES
- EPC RATING: A
- MUST BE VIEWED

£317,500



Ground Floor



Floor 1

Approximate total area⁽¹⁾
1374.58 ft²
127.70 m²

Reduced headroom
7.56 ft²
0.70 m²

(1) Excluding balconies and terraces

Reduced headroom
(below 1.5m/4.92ft)

While every attempt has been made to ensure accuracy, all measurements are approximate, not to scale. This floor plan is for illustrative purposes only.

GIRAFFE360

