



33 Tasman Close

Old Hall, Warrington, WA5 8QN

£110,000

DESIRABLE QUASI STYLE ONE BEDROOM HOME, QUIET CUL-DE-SAC LOCATION, NO CHAIN, GREAT FIRST HOME OR BUY TO LET, LOUNGE, FITTED KITCHEN, DOUBLE BEDROOM WITH WARDROBES, THREE PIECE BATHROOM, DRIVEWAY PARKING & GARDEN, GAS CENTRAL HEATING.

Tasman Close is a really convenient location within walking distance of Westbrook Centre and close to motorway networks. The property has had a long term tenant, who has vacated, hence the reason it is on the market. Some cosmetic updating is required but in doing so would make it a lovely place to live or a base for someone. The accommodation comprises Lounge, Fitted Kitchen with space for appliances, Landing with storage cupboard, Double Bedroom with Fitted Wardrobes and a Three Piece Bathroom. Externally there is driveway parking and an enclosed garden.

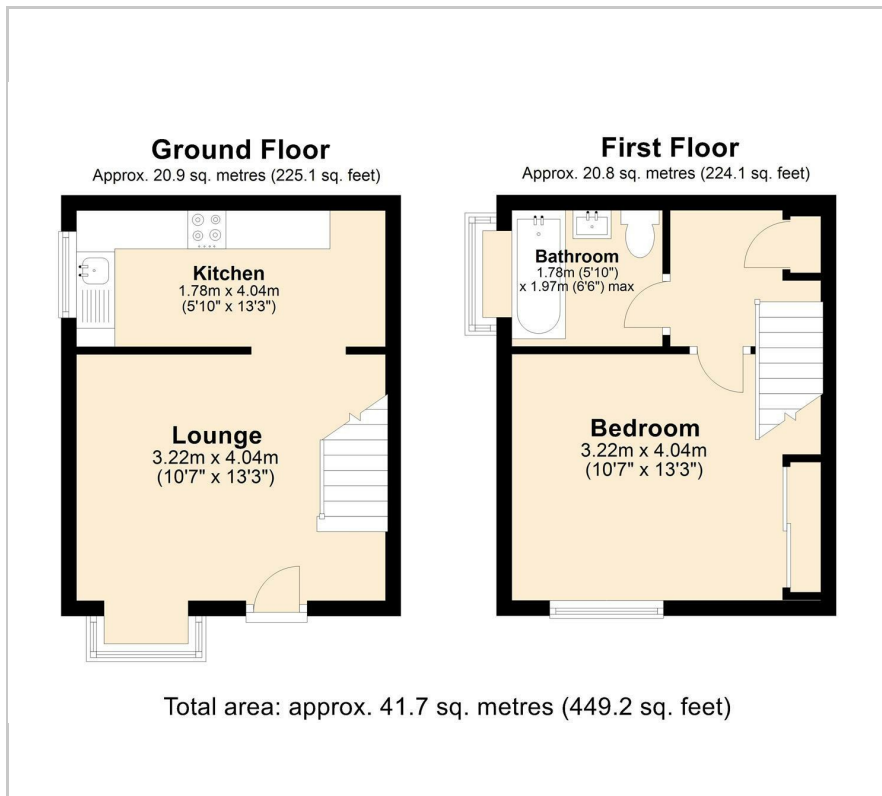
- DESIRABLE QUASI STYLE ONE BEDROOM HOME
- QUIET CUL-DE-SAC LOCATION
- NO CHAIN
- GREAT FIRST HOME OR BUY TO LET
- LOUNGE
- FITTED KITCHEN
- DOUBLE BEDROOM WITH WARDROBES
- THREE PIECE BATHROOM
- DRIVEWAY PARKING & GARDEN
- GAS CENTRAL HEATING

Viewing

Please contact our Let n Sell Office on 07958 253511 if you wish to arrange a viewing appointment for this property or require further information.



Floor Plan



Area Map



Energy Efficiency Graph



These particulars, whilst believed to be accurate are set out as a general outline only for guidance and do not constitute any part of an offer or contract. Intending purchasers should not rely on them as statements of representation of fact, but must satisfy themselves by inspection or otherwise as to their accuracy. No person in this firm's employment has the authority to make or give any representation or warranty in respect of the property.