



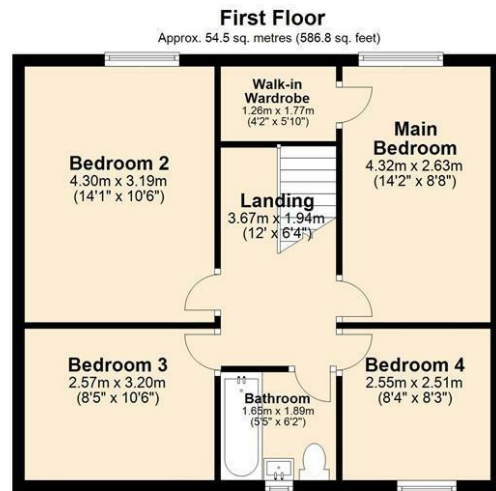
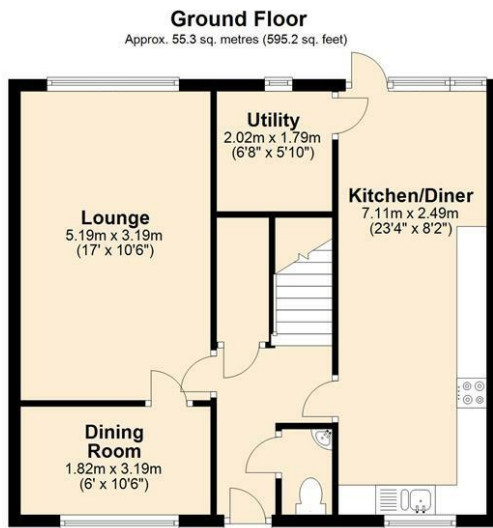
29 Jervis Close, Fearnhead, Warrington, WA2 0BS

SPACIOUS MODERN DETACHED TOWNHOUSE, CUL-DE-SAC LOCATION, AVAILABLE IMMEDIATELY, TWO RECEPTION ROOMS, UTILITY & DOWNSTAIRS WC, FIVE BEDROOMS, THREE PIECE BATHROOM, GARDENS FRONT & REAR, PARKING SPACE, COUNCIL TAX BAND B.

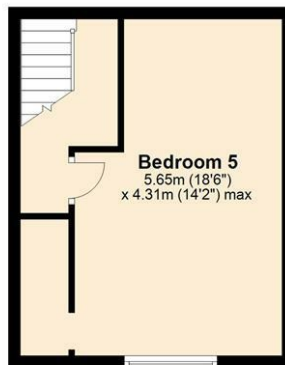
Located in a very popular residential area with easy access to motorways and rail networks, this extremely spacious 5-bedroomed detached property will appeal to couples or families. Secluded location. Large modern fitted kitchen/diner with appliances (except fridge/freezer). Five good sized bedrooms, four on the first floor and the fifth on the third floor. Family bathroom and downstairs cloakroom. Washing machine and tumble dryer included. Dressing room off main bedroom with spacious wardrobes. Spacious understairs storage area. Parking is communal. Birchwood shopping centre is a very short drive away providing a choice of two supermarkets and many other stores and cafes. Warrington town centre is easily reached by bus or train. Birchwood station provides easy access to Manchester and Liverpool by train and access to the M62 is very close by. This property must be viewed to be appreciated.

£1,000

- SPACIOUS MODERN DETACHED TOWNHOUSE
- CUL-DE-SAC LOCATION
- AVAILABLE IMMEDIATELY
- TWO RECEPTION ROOMS
- UTILITY & DOWNSTAIRS WC
- FIVE BEDROOMS
- THREE PIECE BATHROOM
- GARDENS FRONT & REAR
- PARKING SPACE
- COUNCIL TAX BAND B



Second Floor
Approx. 29.5 sq. metres (317.2 sq. feet)



Total area: approx. 139.3 sq. metres (1499.2 sq. feet)

Energy Efficiency Rating		
	Current	Potential
<i>Very energy efficient - lower running costs</i>		
(92 plus) A		
(81-91) B		
(69-80) C		
(55-68) D		
(39-54) E		
(21-38) F		
(1-20) G		
<i>Not energy efficient - higher running costs</i>		
England & Wales	EU Directive 2002/91/EC	