



352 Poplars Avenue

Orford, Warrington, WA2 9UF

£160,000

SPACIOUS THREE BEDROOM TERRACE, POPULAR LOCATION, DRIVEWAY & ADDITIONAL PARKING TO REAR, LOUNGE, FITTED KITCHEN, DINING AREA, FOUR PIECE BATHROOM, NO ONWARD CHAIN, FREEHOLD.

This Well Balanced Family Home has been lived in by the current owner for many years and would also work as a Buy to Let with a rental figure of around £900.00 PCM. Located on Poplars Avenue makes it great for access to local amenities, public transport, the retail parks and Motorway Links. The accommodation comprises Entrance Porch, Entrance Hallway, Lounge, Kitchen opening through to Dining Area, To the First Floor there are Three Bedrooms and a Four Piece Bathroom. Externally there is a Double Driveway to the front whilst to the rear there is a Low Maintenance Enclosed Garden with a gate leading to space for additional parking/garage.

- SPACIOUS THREE BEDROOM TERRACE
- POPULAR LOCATION
- DRIVEWAY & ADDITIONAL PARKING TO REAR
- LOUNGE
- FITTED KITCHEN
- DINING AREA
- FOUR PIECE BATHROOM
- NO ONWARD CHAIN
- FREEHOLD

Viewing

Please contact our Let n Sell Office on 07958 253511 if you wish to arrange a viewing appointment for this property or require further information.



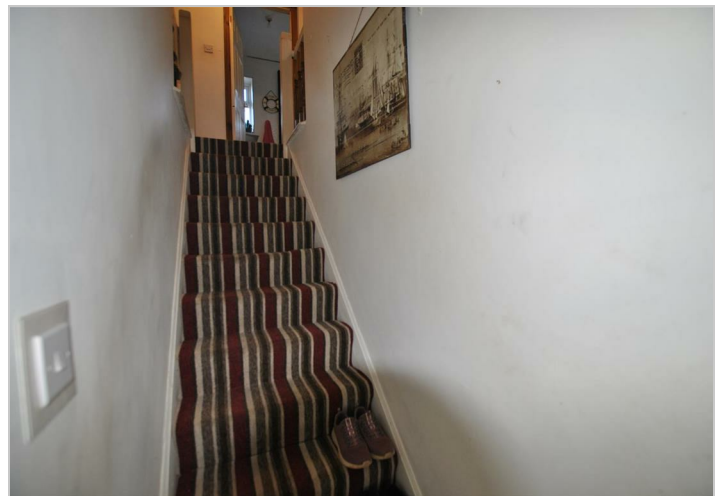
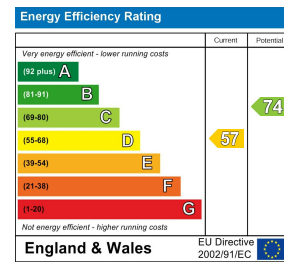
Floor Plan



Area Map



Energy Efficiency Graph



These particulars, whilst believed to be accurate are set out as a general outline only for guidance and do not constitute any part of an offer or contract. Intending purchasers should not rely on them as statements of representation of fact, but must satisfy themselves by inspection or otherwise as to their accuracy. No person in this firm's employment has the authority to make or give any representation or warranty in respect of the property.