




Cambridge Close, Langford, Biggleswade, SG18

Offers Over £575,000

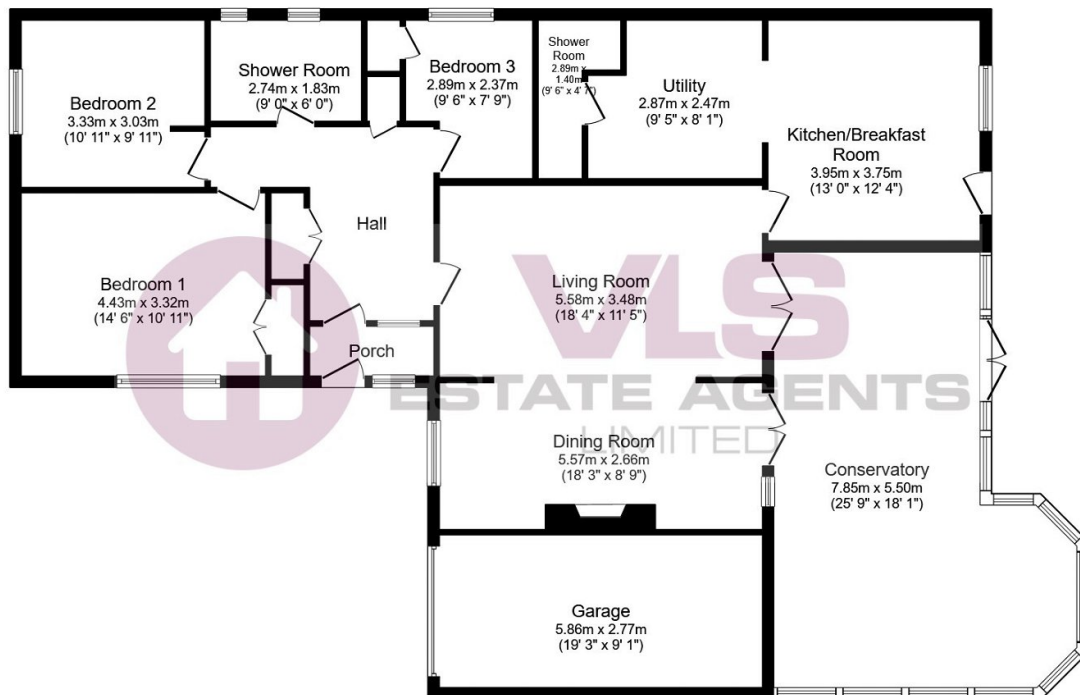
 3  2  0



Rarely available detached bungalow in sought after cul-de-sac in lovely village of Langford. If location and views are important to you, then don't miss out on this large three bedroom detached bungalow.

Key Features

- Detached bungalow
- Cul-de-sac location
- 3 Bedrooms
- Family bathroom plus shower room
- Open plan lounge diner
- Kitchen/Breakfast room
- Large Conservatory
- South facing garden looking out open farm land
- Council tax band E
- Awaiting EPC



Total floor area 172.9 sq.m. (1,861 sq.ft.) approx

This floor plan is for illustrative purposes only. It is not drawn to scale. Any measurements, floor areas (including any total floor area), openings and orientation are approximate. No details are guaranteed, they cannot be relied upon for any purpose and they do not form part of any agreement. No liability is taken for any error, omission or misstatement. A party must rely upon its own inspection(s). Powered by www.focalagent.com