

ANWYL  
thoughtful homes

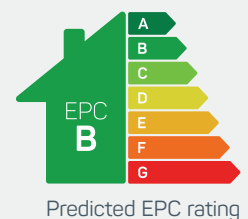


## the cheltenham

4 bed detached with garage

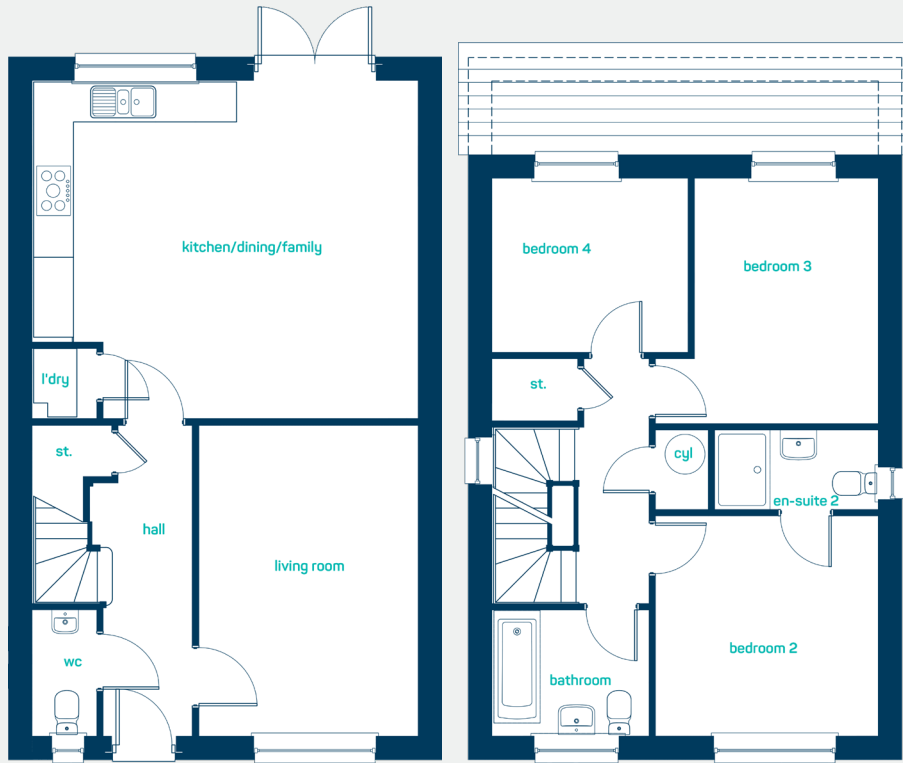
*Spacious* and thoughtfully designed accommodation over 3 floors. Ideal for growing families. Key features include an impressive master suite and shower room on the top floor offering the perfect place to unwind. A further en-suite shower room and family bathroom ensure that even busy times are a pleasure.

[www.anwylhomes.co.uk](http://www.anwylhomes.co.uk)





Large open plan  
*family space*

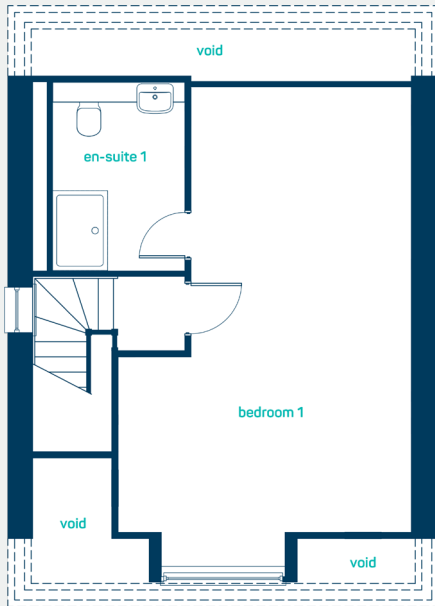


### ground floor

kitchen/dining/ family	18'11" x 16'6"
living room	10'8" x 15'2"
laundry	3'1" x 3'5"
cloaks	3'1" x 6'2"
kitchen/dining/ family	5.76m x 5.03m
living room	3.25m x 4.63m
laundry	0.95m x 1.03m
cloaks	0.95m x 1.88m

### first floor

bedroom 2	10'11" x 10'10"
en-suite 2	8'0" x 3'11"
bedroom 3	10'11" x 12'0"
bedroom 4	9'7" x 8'6"
bathroom	7'8" x 6'2"
bedroom 2	3.33m x 3.29m
en-suite 2	2.44m x 1.20m
bedroom 3	3.33m x 3.65m
bedroom 4	2.93m x 2.60m
bathroom	2.34m x 1.88m



### second floor

bedroom 1	14'7" x 23'10"
en-suite 1	6'7" x 9'4"
bedroom 1	4.43m x 7.27m
en-suite 1	2.00m x 2.85m

**the cheltenham**  
4 bed detached with garage

**ANWYL**  
*thoughtful homes*

**NEW  
HOMES  
QUALITY  
CODE**

**NEW HOMES  
OMBUDSMAN  
SERVICE**

[www.anwylhomes.co.uk](http://www.anwylhomes.co.uk)

Anwyl Homes is a Registered Developer with the NHQB. This is a computer-generated image of the cheltenham, elevation treatment may vary. Room sizes are approximate, dimensions are taken from the longest room point (please consult homes advisor for measurement points). Plots may be handed and any garages may be single or double. Kitchen and bathroom layouts are indicative. These plans are correct at the time of going to press, but may be subject to change during construction. Please ensure that you check for specific plot details. 20/09/23.

*everything considered.*