



Terence Painter

ESTATE AGENTS

- Lock Up Shop Premises To Let
- Prime High Street Location
- Close to Margate Old Town & Sea Front
- Currently Arranged as a Salon
- Approx. 457sqft (42.53m2)
- Kitchenette & W.C.
- No Premium
- Great Start Up Opportunity



36 High Street, Margate, Kent. CT91DS.

Leasehold Per Annum Rental £10,000

PRIME HIGH STREET LOCK UP SHOP PREMISES TO LET, CLOSE TO MARGATE'S SEA FRONT & OLD TOWN

Great start-up opportunity! Situated in Margate's vibrant lower High Street is this lock-up shop premises suitable for a number of retail or other uses, subject to planning. The premises is currently trading as a hair dressing salon and has previously been a retail store.

This attractive property has an overall square footage of approx. 457sqft (42.53m²) and features a large shop frontage, spacious retail/salon area, a small kitchenette and a W.C.

Due to the current occupier's relocation this prime unit has now become available and is being offered with the benefit of a new Full Repairing & Insuring Commercial Lease.

Viewings are strictly by appointment with the Sole Agents Terence Painter - please call 01843 866 866 for your viewing appointment.

Ground Floor

Entrance

Via recessed porchway with glazed front door and attractive side showcase display window.

Retail/Salon Area:

7.00m max deep x 5.190m wide (23' 0" x 17' 0") With large feature split sectioned front window. Painted wood panelled ceiling with inset lighting. Wall mounted power and lighting points. Laminate wood effect flooring. Air heating and cooling system. Plumbing for wash basins. Steps down to:

Hallway

5.24m x 0.85m (17' 2" x 2' 9") With access to kitchenette, W.C. and floor hatch access to basement.

Kitchenette

2.47m x 1.26m extending to 2.67m (8' 1" x 4' 2" to 8' 9") L-shaped fitted with one and a half bowl single drainer stainless steel sink unit inset to roll top work surface area. Fitted cupboard.

W.C.

1.11m x 1.00m (3' 8" x 3' 3") With attractive tiled floor, low level W.C. and corner wash hand basin.

Basement

There is a private (unmeasured) basement area below the shop unit which is accessed from the hallway via a floor hatch and steps. There is a light and an electric water heater.

New Lease

The Landlord is offering a new 5-year Full Repairing & Insuring Lease with a starting rent of £10,000 per annum, exclusive of business rates and insurance.

36 High Street, Margate, Kent. CT91DS.

Per Annum Rental £10,000

Building Insurance

The Landlord will insure the premises with the premium recoverable from the tenant. The tenant will be responsible for their own contents insurance.

Planning

The property may be suitable for various uses, subject to Landlord's consent and any necessary planning consents.

All planning enquiries should be made to Thanet District Council Planning Department on 01843 577150 or to planning.services@thanet.gov.uk

Costs & Rent Deposit

The ingoing tenant will be responsible for their own legal costs. The Landlord has requested a rent deposit equal to 3 months rent.

Business Rates

The current Business Rateable Value is £4,750. This is not the amount payable but the amount against which the current rate is applied. The premises may be exempt from Business Rates depending on the ingoing tenants circumstances.

Services

We understand the property to benefit from electricity, mains water & drainage. No gas.

Energy Performance Certificate - Rating awaited.



36 High Street, Margate, Kent. CT91DS.

Per Annum Rental £10,000

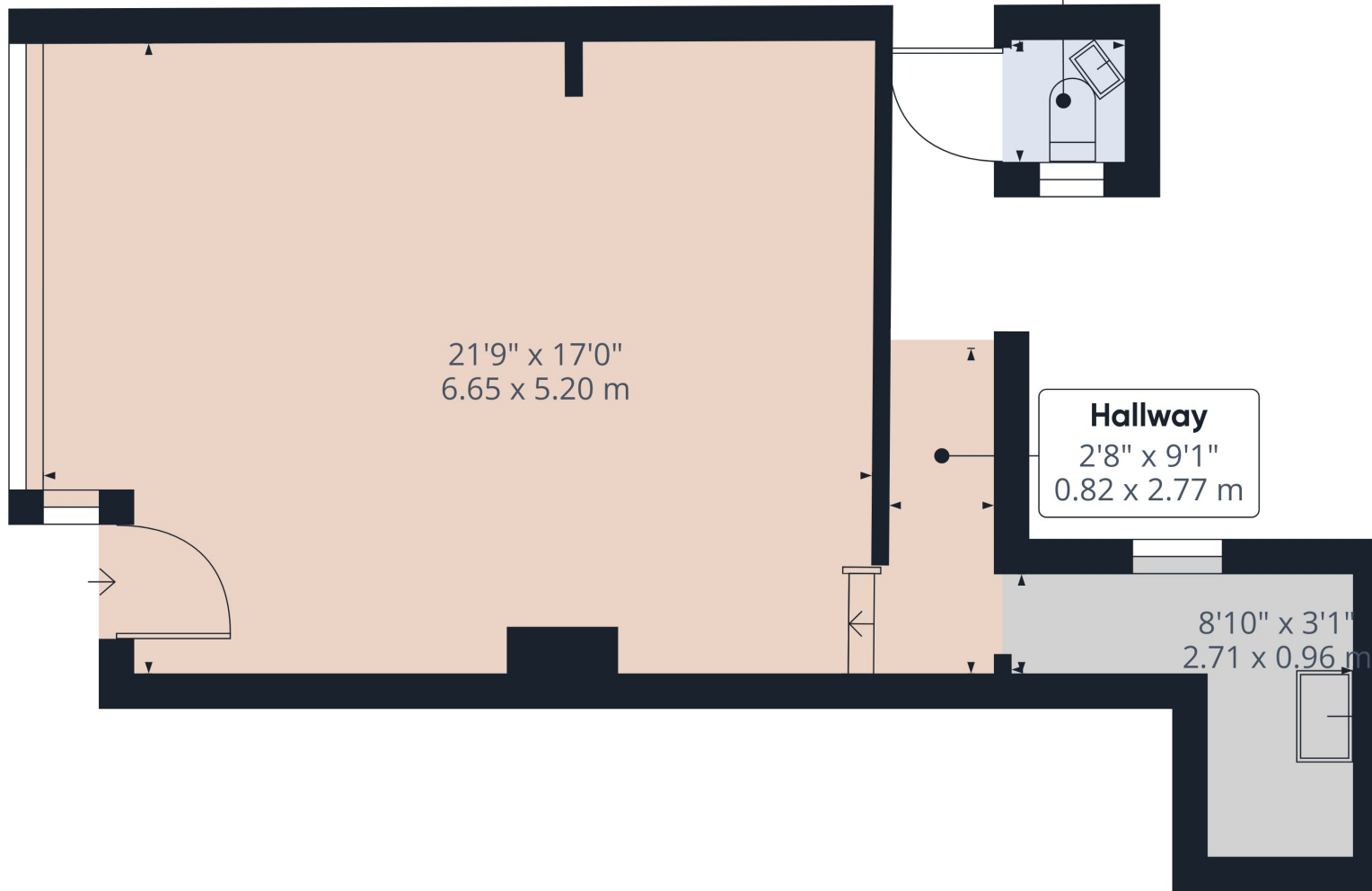


Viewing strictly by prior appointment with the Selling Agents
TERENCE PAINTER.

Email: sales@terencepainter.co.uk

Prospect House, 44 High Street, Broadstairs, Kent, CT10 1JT.

These particulars do not constitute any part of an offer or contract. None of the statements contained in these particulars are to be relied on as representations of fact. Any intending purchaser should satisfy themselves by inspection or otherwise as to the correctness of the statements contained in these particulars. The Vendor does not make or give, and neither Terence Painter Properties, nor any person in its employment has any authority to make or give, any representation or warranty whatsoever in relation to this property. The mention of any appliances and/or services in these sales particulars does not imply that they are in full and efficient working order.



Approximate total area^m

457.83 ft²
42.53 m²

Excluding balconies and terraces

While every attempt has been made to ensure accuracy, all measurements are approximate, not to scale. This floor plan is for illustrative purposes only.

GIRAFFE360

36 High Street, Margate, Kent. CT91DS.

Per Annum Rental £10,000