



ELLINGTON
PROPERTIES

MERÇER HOUSE

NORTH TOWER
FLOOR PLAN

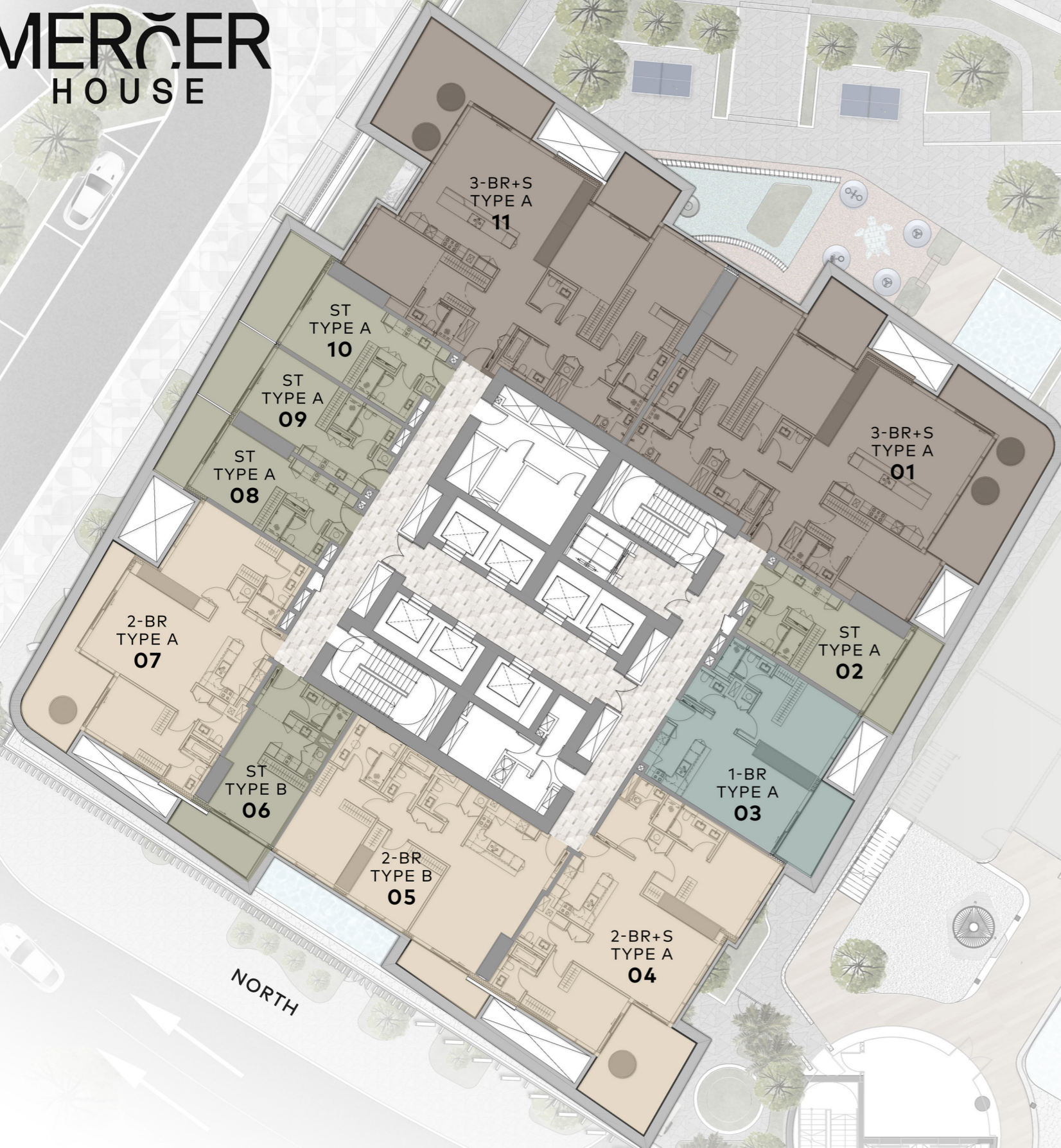


MERÇER HOUSE

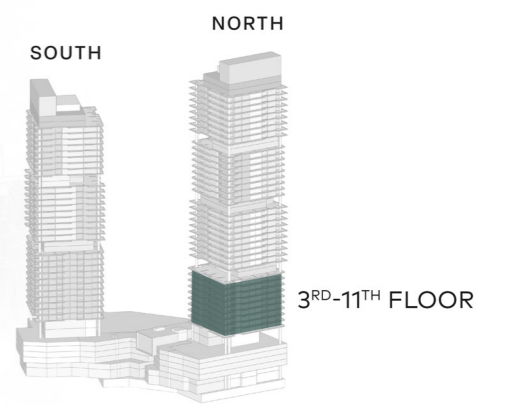


3RD - 11TH FLOOR TYPICAL PLAN

-  STUDIO
-  1 BEDROOM
-  2 BEDROOM
-  3 BEDROOM



NORTH



MERÇER HOUSE



13TH - 21ST & 32ND - 39TH FLOOR TYPICAL PLAN

-  1 BEDROOM
-  2 BEDROOM
-  3 BEDROOM

2BR+S
TYPE A
08

2BR
TYPE B
09

1 BR
TYPE A
07

3-BR+S
TYPE B
01

2-BR
TYPE A
06

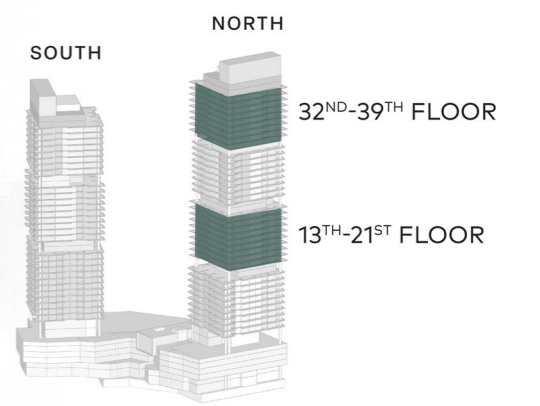
1 BR
TYPE B
05

1 BR
TYPE A
02

1-BR
TYPE B
04

2-BR+S
TYPE A
03

NORTH

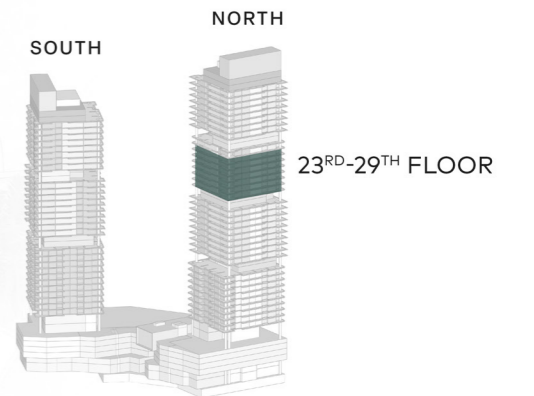


MERÇER HOUSE



23RD - 29TH FLOOR TYPICAL PLAN

-  1 BEDROOM
-  2 BEDROOM
-  3 BEDROOM



MERÇER HOUSE

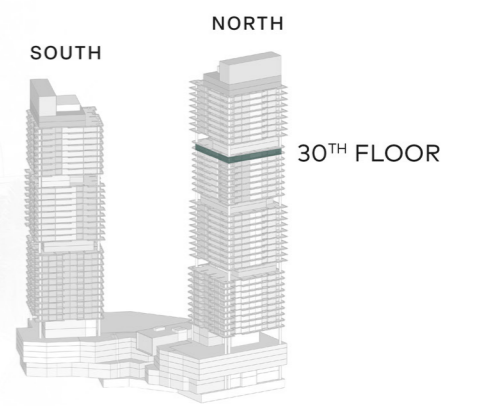


30TH FLOOR TYPICAL PLAN

-  1 BEDROOM
-  2 BEDROOM
-  3 BEDROOM



NORTH



MERÇER HOUSE



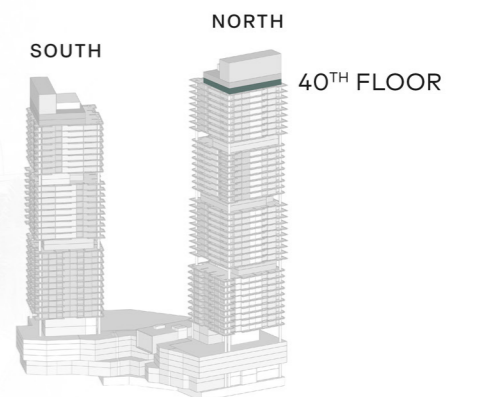
40TH FLOOR TYPICAL PLAN

 4 BEDROOM
PENTHOUSE
DUPLEX LOWER LEVEL

4 BR
PENTHOUSE
LOWER LEVEL
02

4 BR
PENTHOUSE
LOWER LEVEL
01

NORTH



MERÇER HOUSE



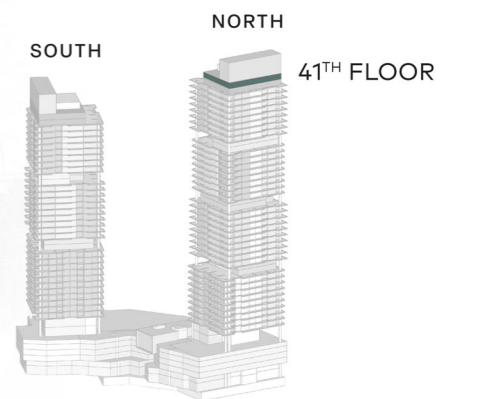
41ST FLOOR TYPICAL PLAN

 4 BEDROOM
PENTHOUSE
DUPLEX UPPER LEVEL

4 BR
PENTHOUSE
UPPER LEVEL
02

4 BR
PENTHOUSE
UPPER LEVEL
01

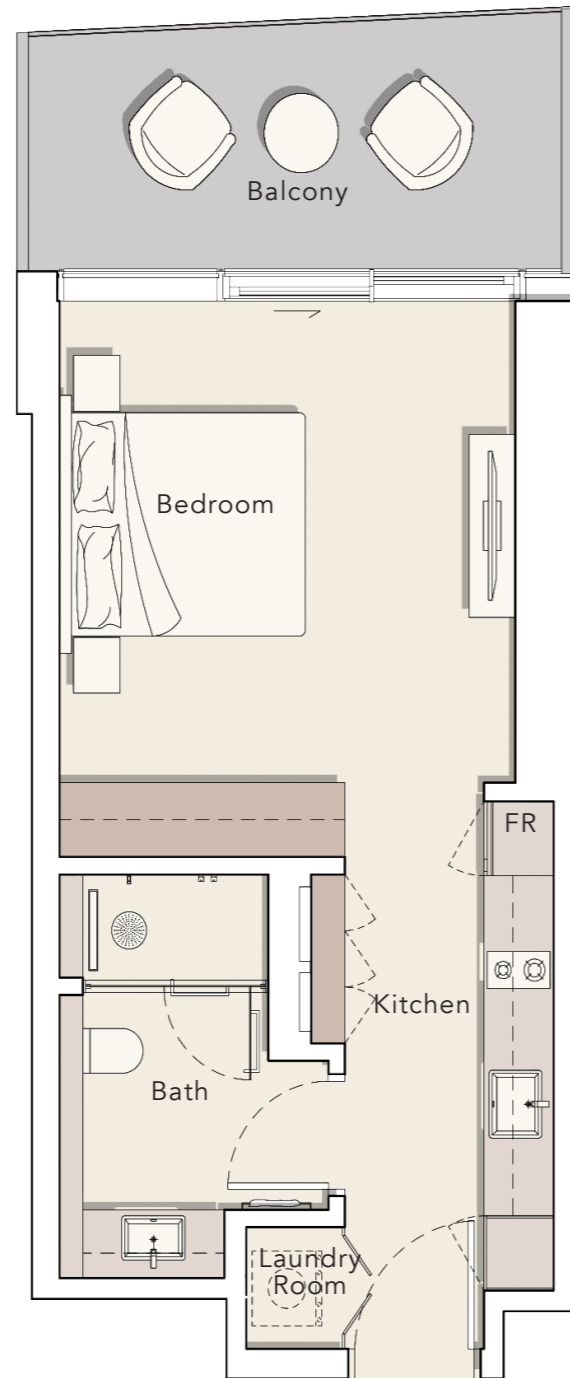
NORTH



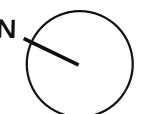
STUDIO

TYPE A

Internal Living Area : 408.06 Sq. Ft
Outdoor Living Area : 105.81 Sq. Ft
Total Living Area : 513.87 Sq. Ft



3rd - 11th FLOOR



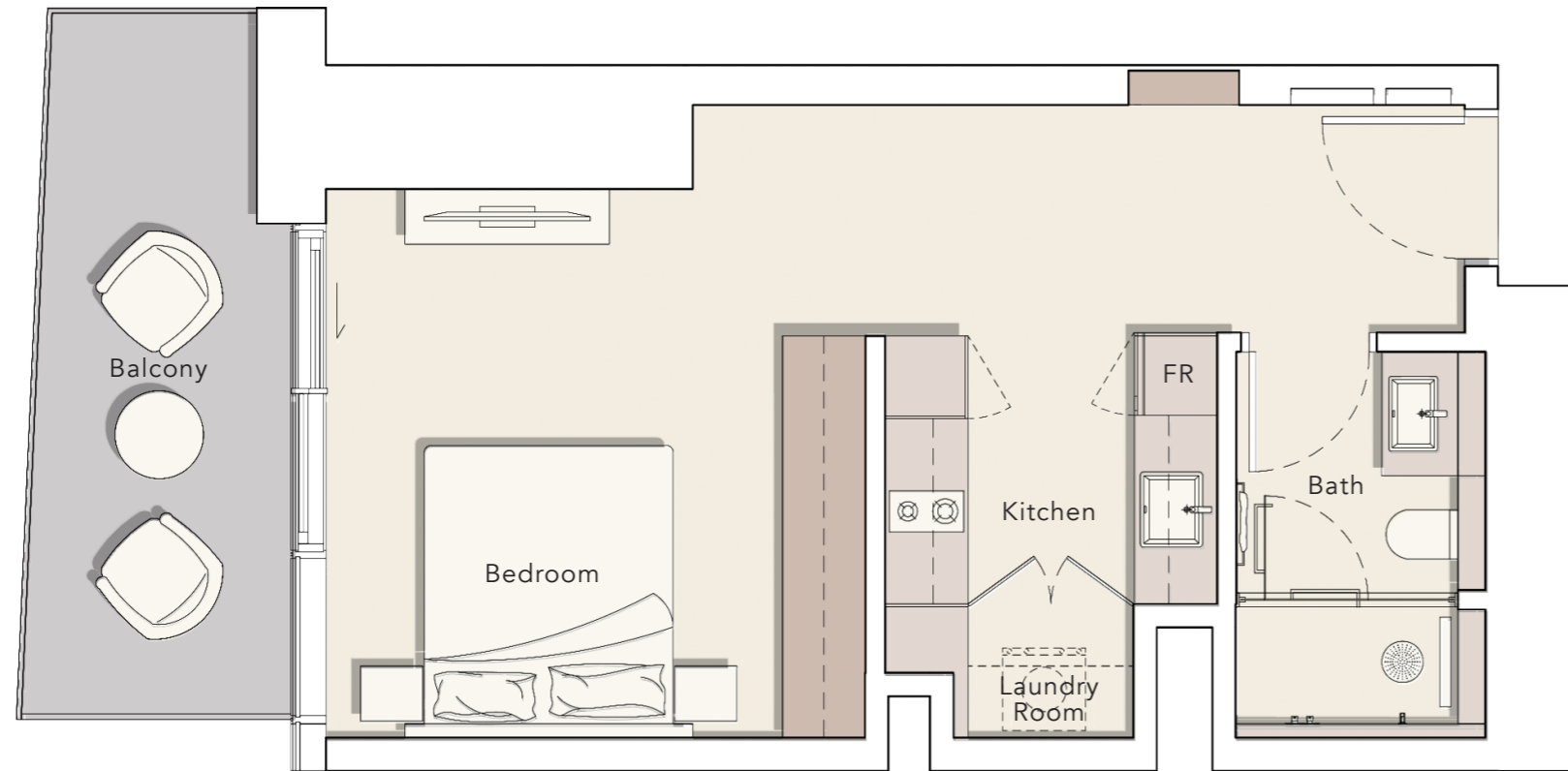
STUDIO

TYPE B

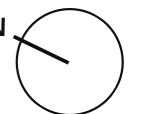
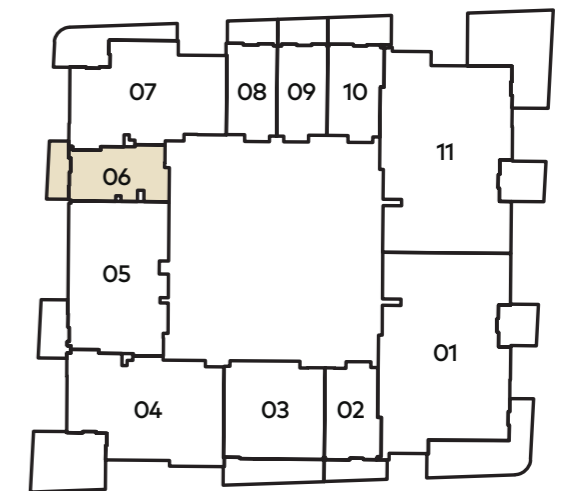
Internal Living Area : 446.81 Sq. Ft

Outdoor Living Area : 110.44 Sq. Ft

Total Living Area : 557.25 Sq. Ft



3rd - 11th FLOOR



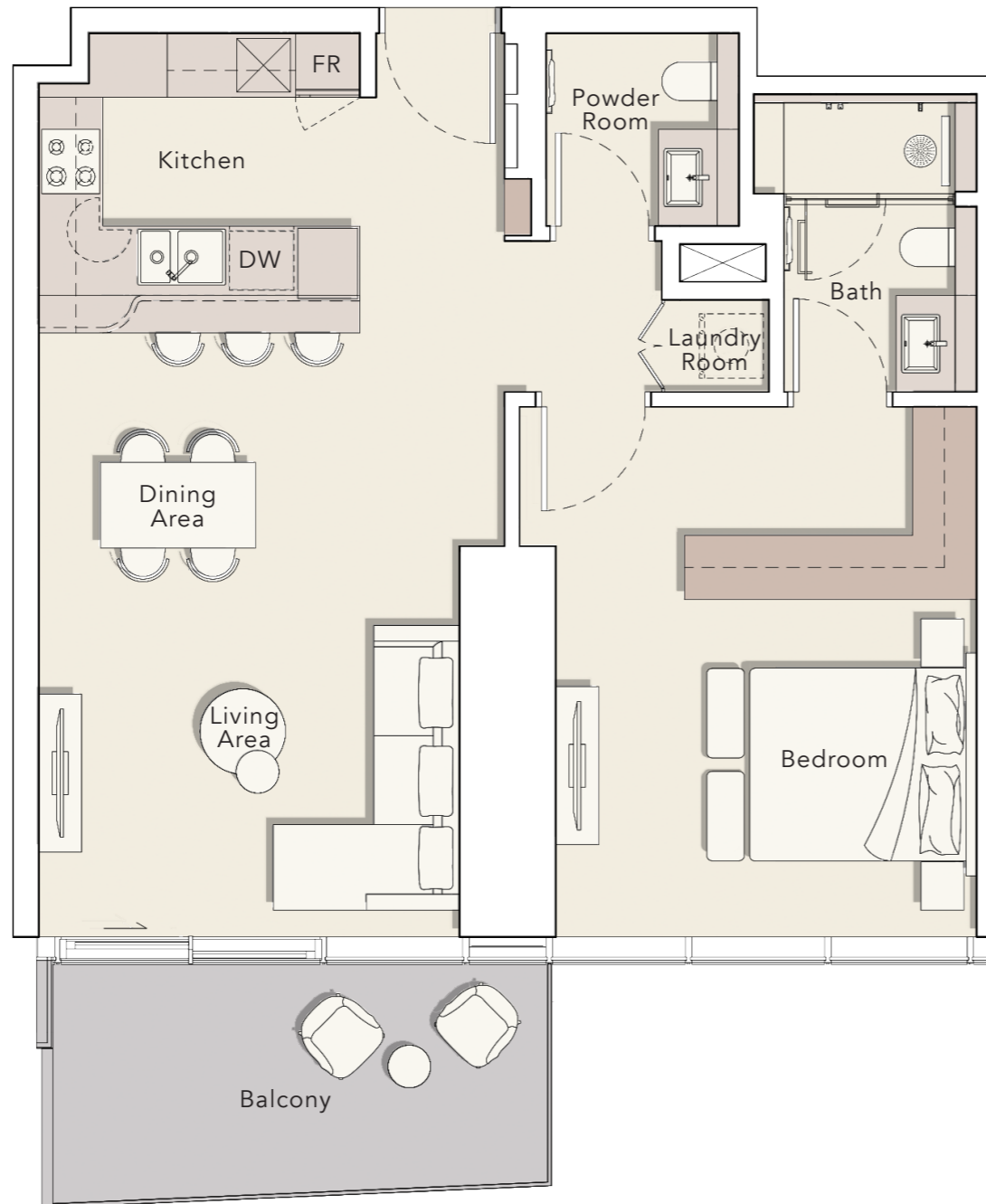
1 BEDROOM

TYPE A

Internal Living Area : 824.41 Sq. Ft

Outdoor Living Area : 115.28 Sq. Ft

Total Living Area : 939.69 Sq. Ft



3rd - 11th FLOOR



3rd - 11th FLOOR

303

13th - 21st FLOOR

1302
1307

23rd - 29th FLOOR

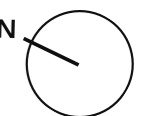
2303
2308

30th FLOOR

3008

32nd - 39th FLOOR

3202
3207



1 BEDROOM

TYPE B

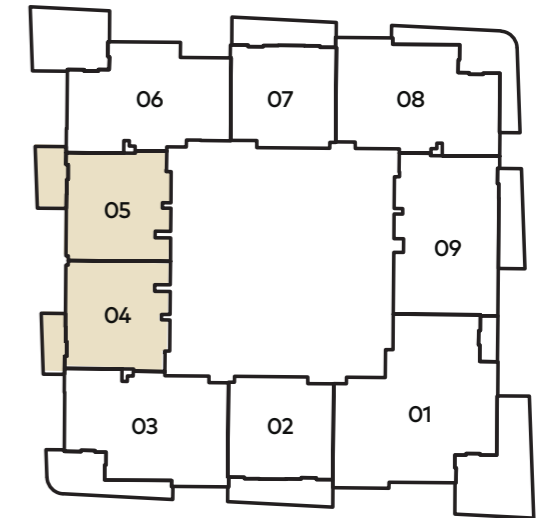
Internal Living Area : 862.08 Sq. Ft

Outdoor Living Area : 109.36 Sq. Ft

Total Living Area : 971.44 Sq. Ft



13th - 21th FLOOR



13th - 21st FLOOR

1304
1305

23rd - 29th FLOOR

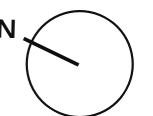
2305
2306

30th FLOOR

3005
3006

32nd - 39th FLOOR

3204
3205



2 BEDROOM

TYPE A

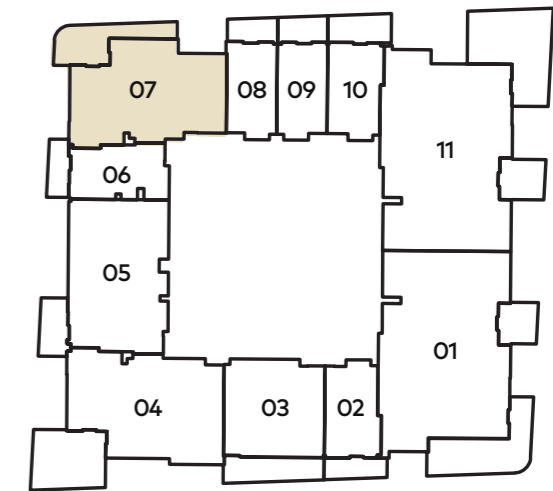
Internal Living Area : 1221.27 Sq. Ft

Outdoor Living Area : 273.94 Sq. Ft

Total Living Area : 1495.21 Sq. Ft



3rd - 11th FLOOR



3rd - 11th FLOOR

307

13th - 21st FLOOR

1306

23rd - 29th FLOOR

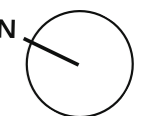
2307

30th FLOOR

3007

32nd - 39th FLOOR

3206



2 BEDROOM

TYPE B

Internal Living Area : 1278.11 Sq. Ft

Outdoor Living Area : 97.09 Sq. Ft

Total Living Area : 1375.20 Sq. Ft



3rd - 11th FLOOR



3rd - 11th FLOOR

305

13th - 21st FLOOR

1309

23rd - 29th FLOOR

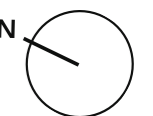
2301

30th FLOOR

3001

32nd - 39th FLOOR

3209



2 BEDROOM + S

TYPE A

Internal Living Area : 1329.45 Sq. Ft

Outdoor Living Area : 260.49 Sq. Ft

Total Living Area : 1589.94 Sq. Ft



3rd - 11th FLOOR



3rd - 11th FLOOR

304

13th - 21st FLOOR

1303
1308

23rd - 29th FLOOR

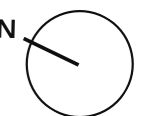
2302
2304

30th FLOOR

3002
3004

32nd - 39th FLOOR

3203
3208



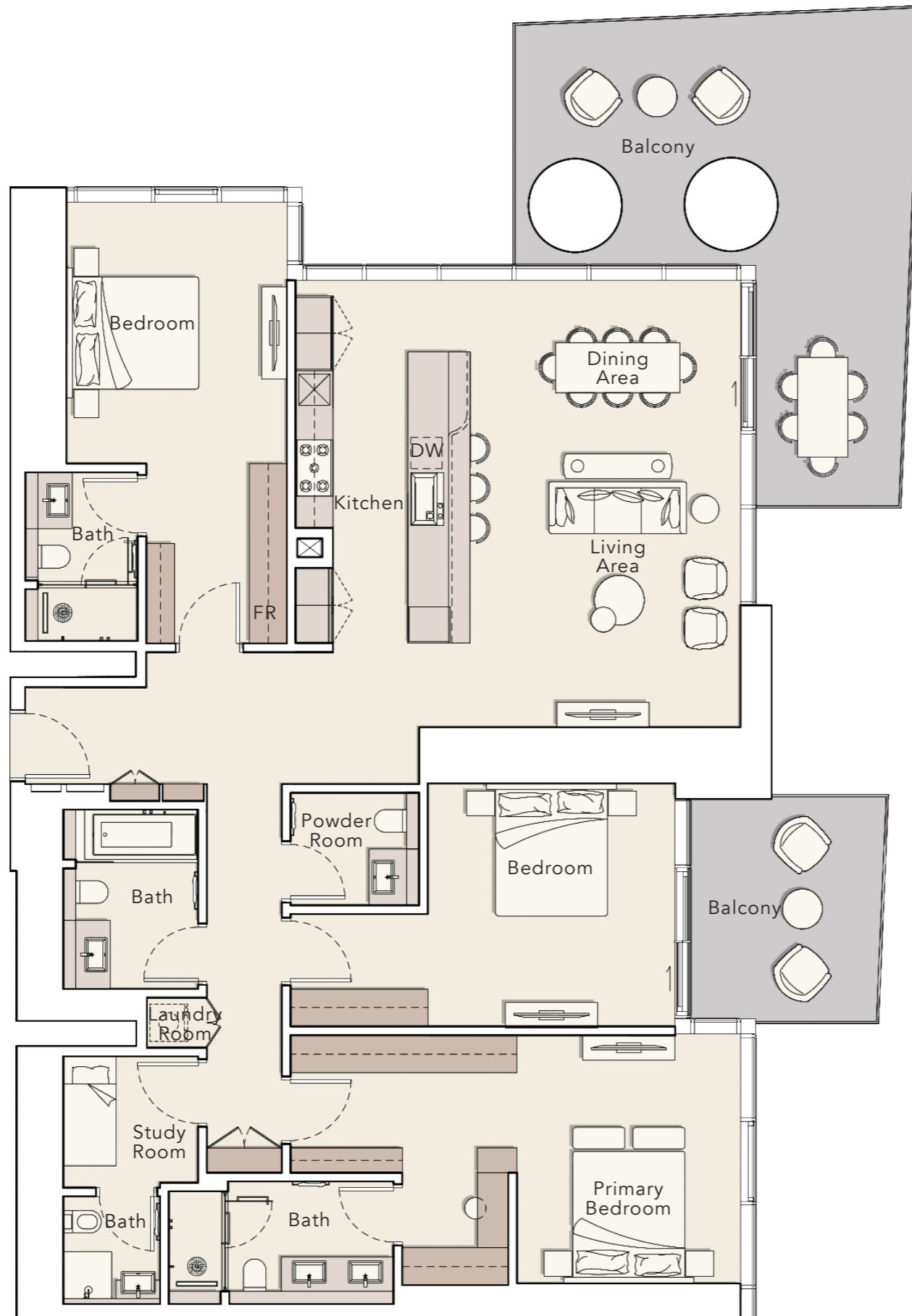
3 BEDROOM + S

TYPE A

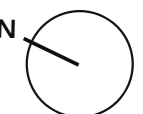
Internal Living Area : 2070.22 Sq. Ft

Outdoor Living Area : 506.98 Sq. Ft

Total Living Area : 2577.20 Sq. Ft



3rd - 11th FLOOR



3 BEDROOM + S

TYPE B

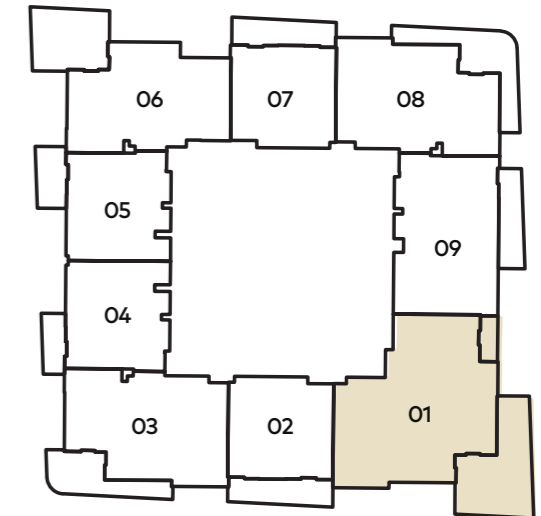
Internal Living Area : 1740.74 Sq. Ft

Outdoor Living Area : 394.39 Sq. Ft

Total Living Area : 2135.13 Sq. Ft



13th - 21th FLOOR



13th - 21st FLOOR

1301

23rd - 29th FLOOR

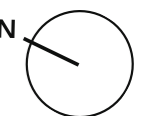
2309

30th FLOOR

3009

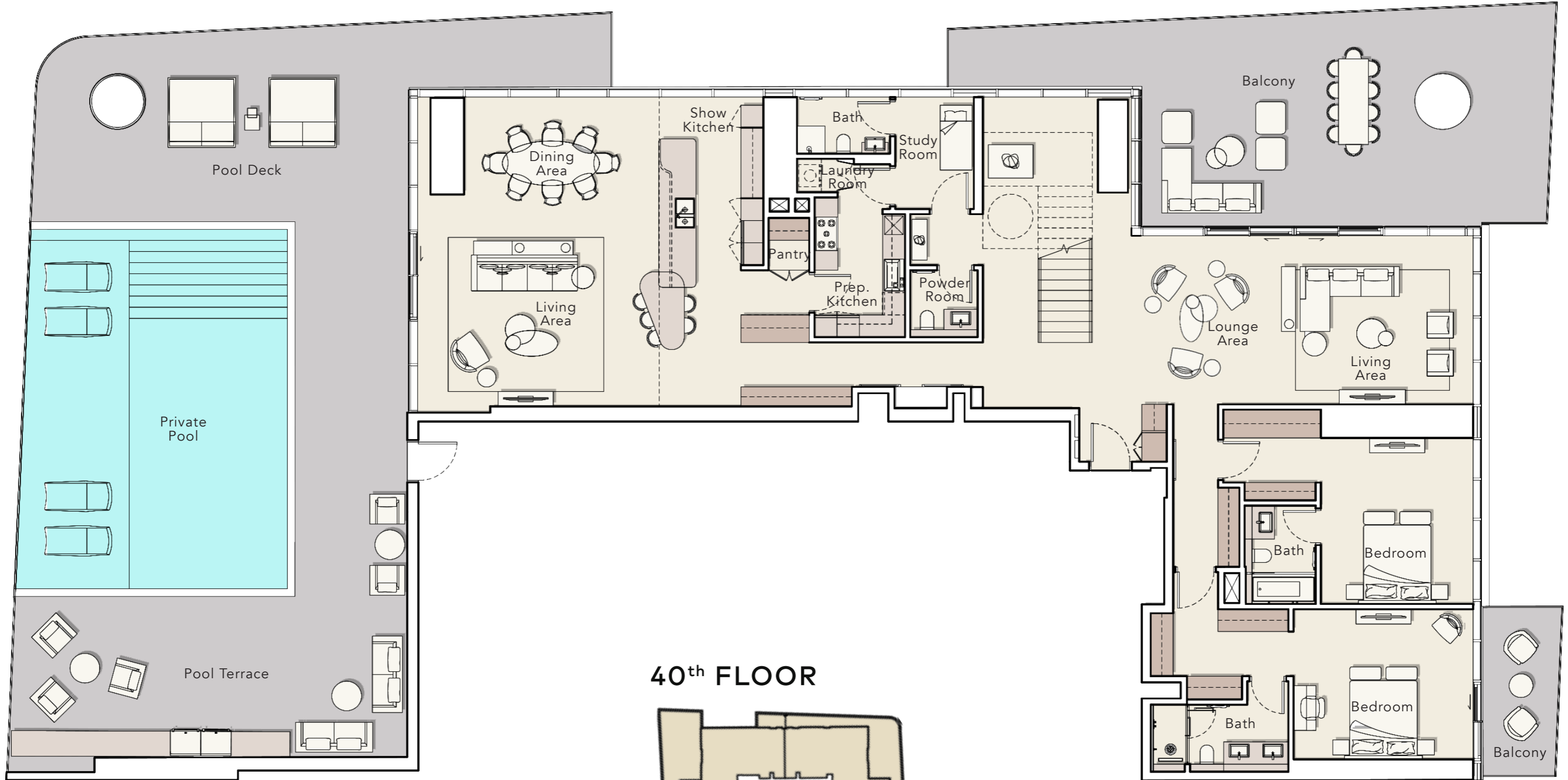
32nd - 39th FLOOR

3201

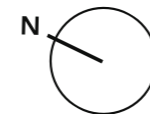
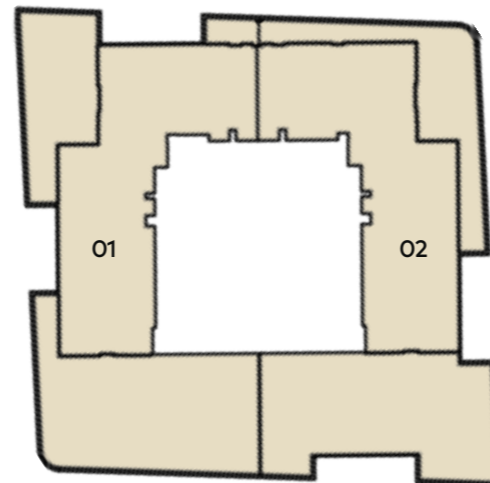


PENTHOUSE

DUPLEX LOWER LEVEL



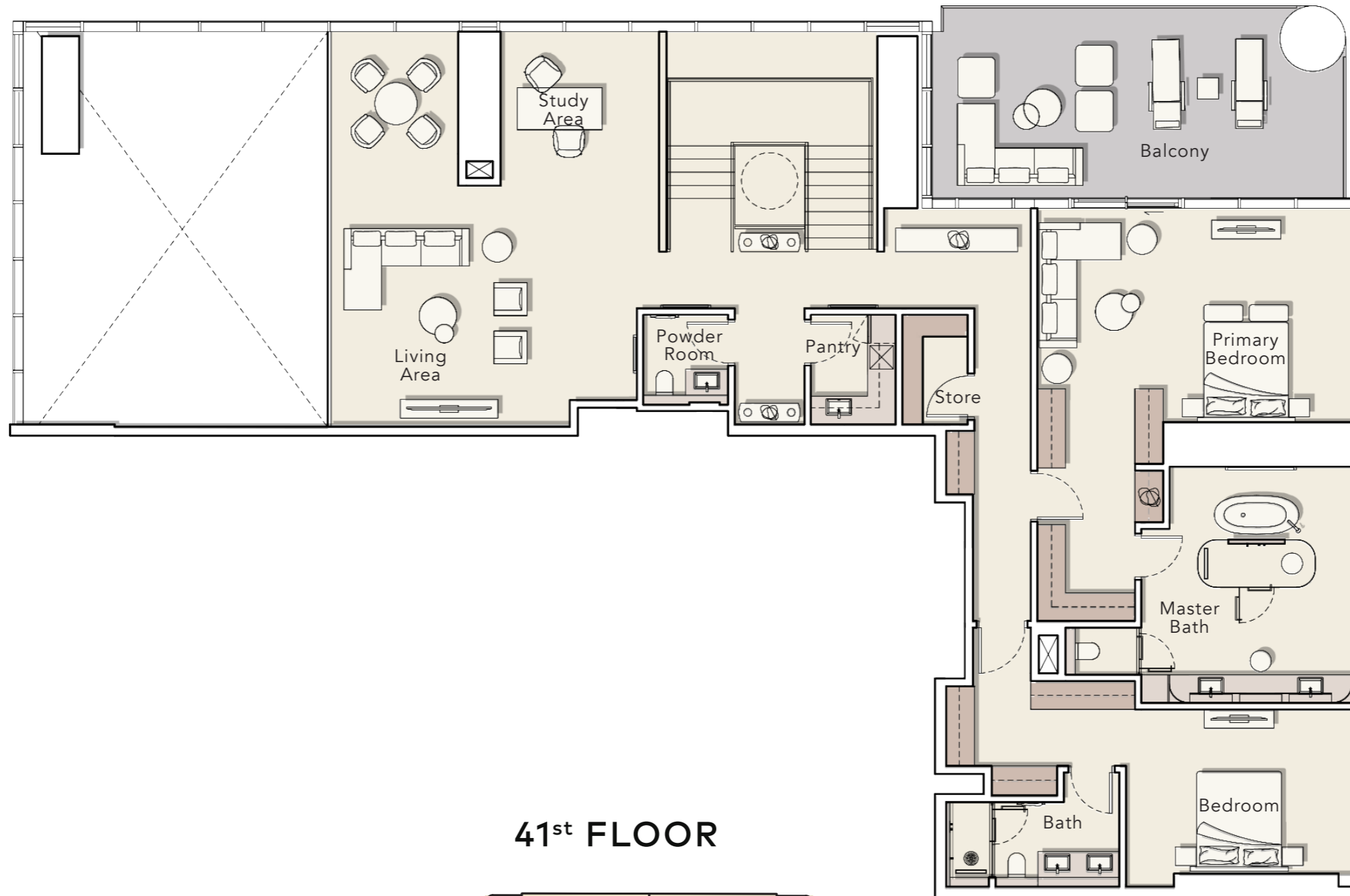
40th FLOOR



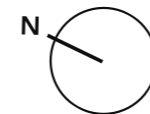
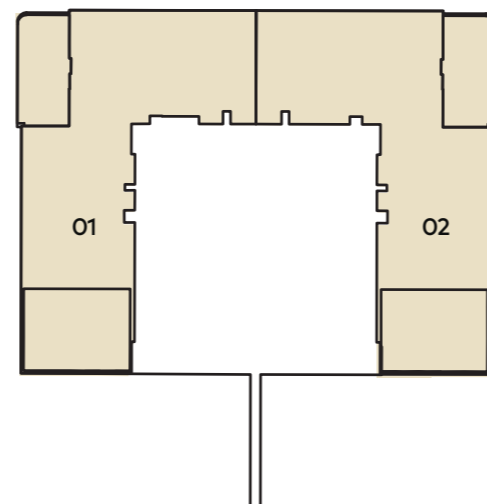
Internal Living Area : **5856.43 Sq. Ft**
 Outdoor Living Area : **3620.66 Sq. Ft**
 Total Living Area : **9477.08 Sq. Ft**

PENTHOUSE

DUPLEX UPPER LEVEL



41st FLOOR



Internal Living Area : **5856.43 Sq. Ft**
Outdoor Living Area : **3620.66 Sq. Ft**
Total Living Area : **9477.08 Sq. Ft**

MERČER

HOUSE

800 8288
info@ellingtongroup.com

ELLINGTONPROPERTIES.AE

The renderings and visualizations contained in this brochure are provided for illustrative and marketing purposes. While the information provided is believed to be accurate and reliable at the time of printing, only the information contained in the final Sales and Purchase Agreement will have any legal effect.