

PAFILIA  
PLAZA

# A PIONEERING PROJECT SITUATED AT THE HEART OF PAPHOS.

- 8 levels high
- Ground floor facilities including gym
- Central location within walking distance to
  - Banks
  - Supermarket
  - Harbour
  - Mall
  - University of Beirut
  - Hotels, Cafes, Restaurants
  - Beaches
- Modern architecture
- Communal pool & gardens
- Sea views
- Spacious balconies

0.75 KM to the sea

LOCATION LINK

<https://goo.gl/maps/XeiybCmTVwMuUhyt9>



# LOCAL AREA

ARIEL VIEW FROM PAFILIA PLAZA PLOT

PAPHOS  
ARCHAEOLOGICAL  
PARK

PAPHOS  
LIGHTHOUSE

FABRICA  
HILL

LIGHTHOUSE  
BEACH

TOMB OF THE  
KINGS AVENUE

KINGS AVENUE  
MALL

ELYSIUM  
HOTEL

TOMB OF THE  
KINGS



# LOCAL AREA

ARIEL VIEW FROM PAFILIA PLAZA PLOT

ANTASIA  
BEACH CLUB

ALMYRA  
HOTEL

ANNABELLE  
HOTEL

MUNICIPAL  
BATHS

SEASIDE  
RESTAURANTS  
AND CAFES

PAPHOS  
PROMENADE

PAPHOS  
CASTLE



# PLACES OF INTEREST

1. Paphos Castle
2. Kato Paphos Archeological Park
3. Paphos Mosaics
4. Tomb of the Kings
5. Town Centre

## A GREAT LOCATION

Shopping 3mins  
Town Center 6mins  
Hotels 4mins  
Highway 10mins  
Beach 4mins  
Bank 3mins  
Port 3mins  
Paphos airport 12mins  
Larnaka airport 80mins  
Troodos 73mins  
Limassol 40mins  
Nicosia 95mins

-  PRIVATE SCHOOLS
-  SUPERMARKETS
-  HOSPITALS



# PROPERTY DETAILS

---

Property	Type	Bedrooms	Bathroom	Covered Balcony	Internal Covered Area	Total Covered Area m <sup>2</sup>	PRICE Exc VAT
A 101	Apartment	2	2	22.00	85.00	107.00	555.000€

## KEY FEATURES:

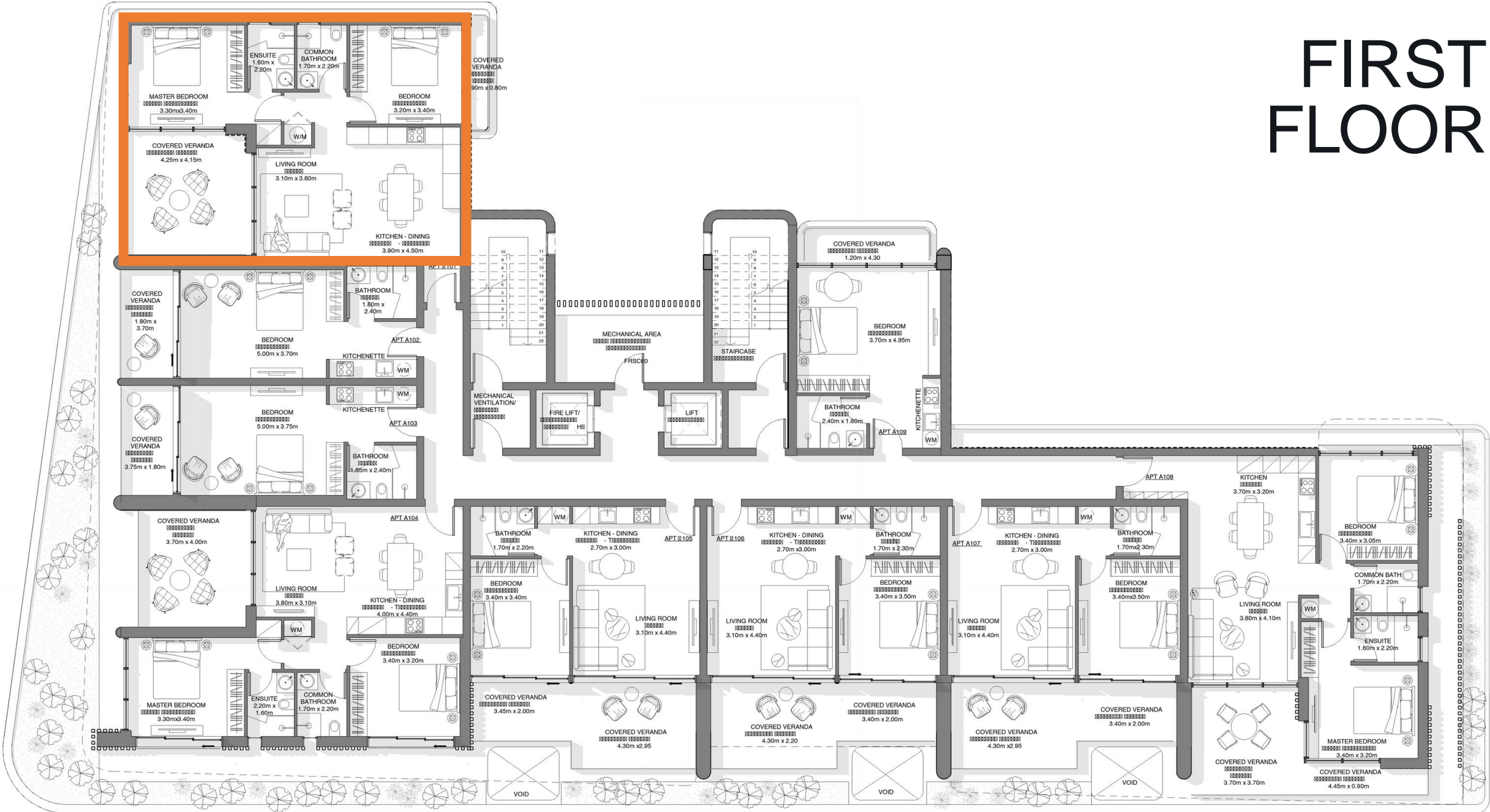
- Underground parking
- Underfloor heating
- Concealed VRV heating & cooling

# MASTER PLAN



Delivery January 2026

# FIRST FLOOR





# UNOBSTRUCTED VIEWS



22.20m  
LEVEL 08

---

19.20m  
LEVEL 07

---



16.20m  
LEVEL 06

---

13.20m  
LEVEL 05

---



10.20m  
LEVEL 04

---

7.20m  
LEVEL 03

---



4.20m  
LEVEL 02

---

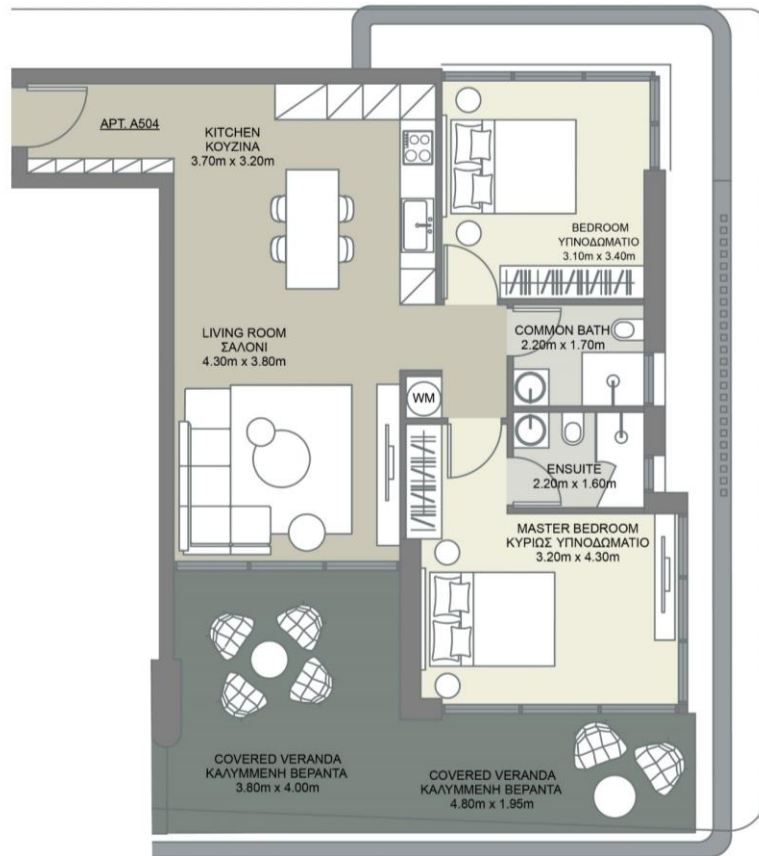
1.20m  
LEVEL 01

---



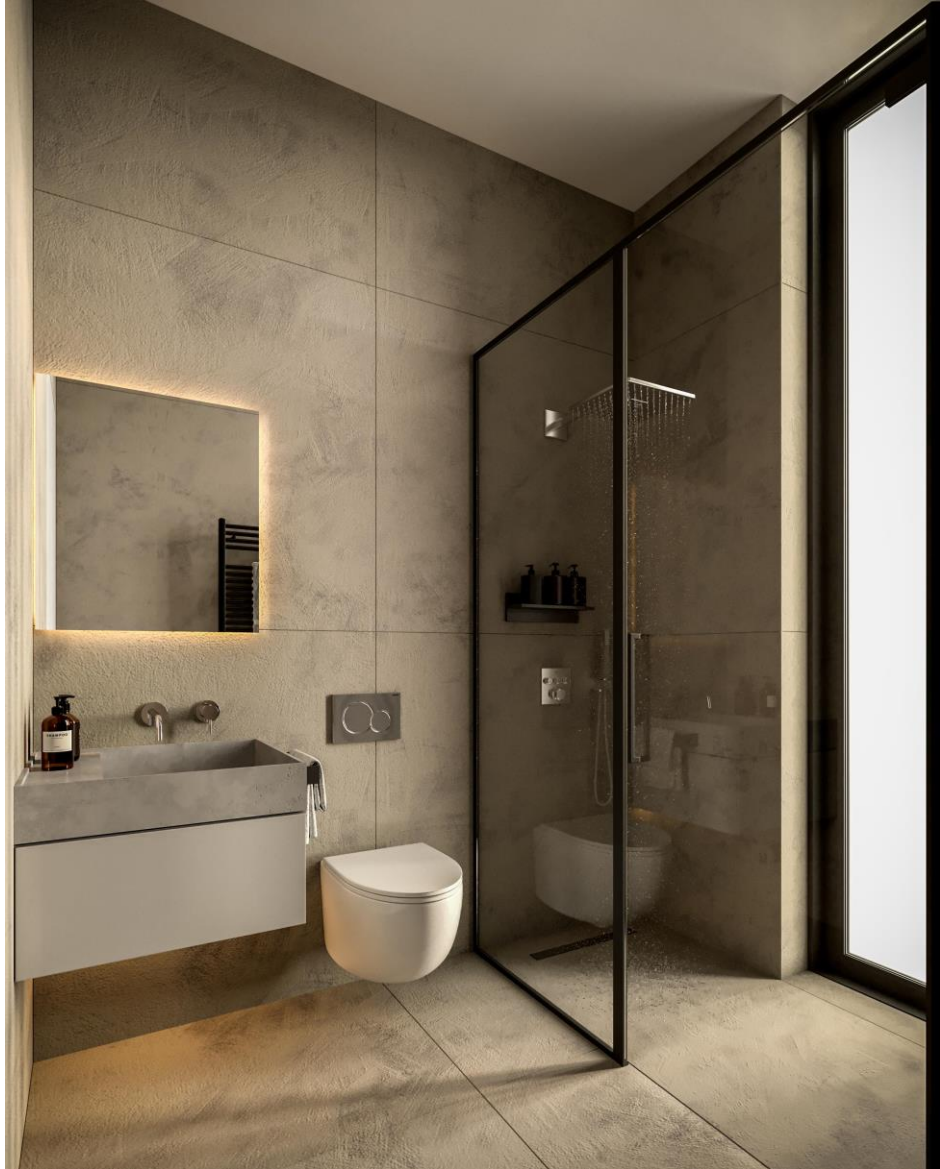


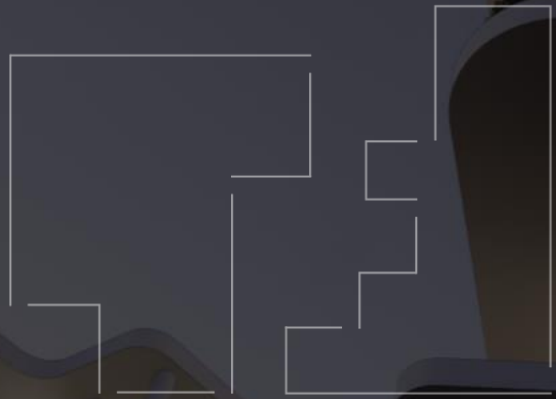
# TYPICAL TWO BEDROOM LAYOUT











PAFILIA  
PLAZA