



2-4 Dunstable Place, Luton, Beds, LU1 2RD

Spacious Brand New One Bedroom Flat

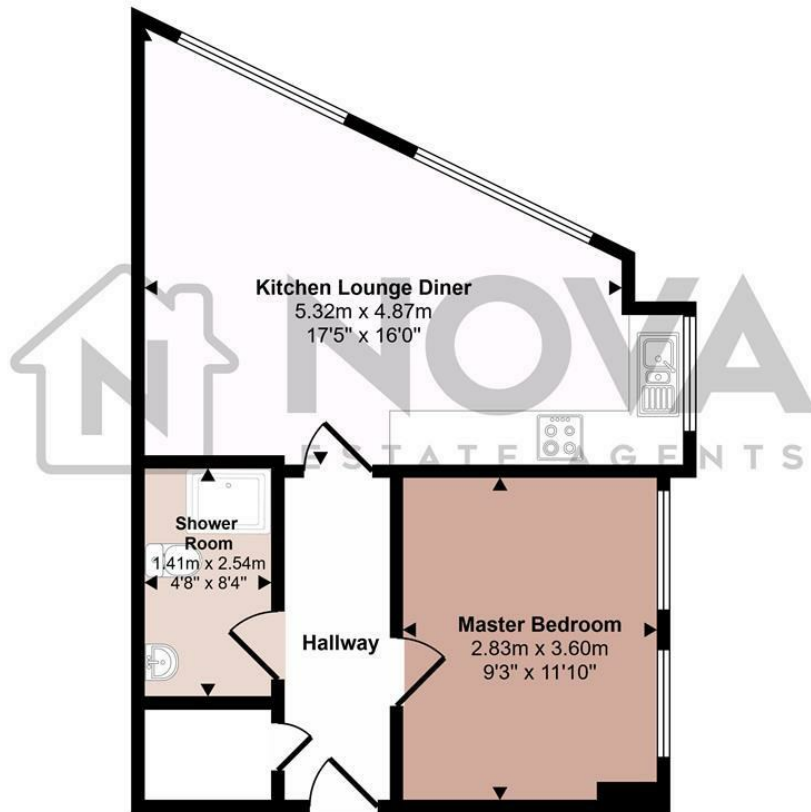
Discover this larger than average brand new one bedroom flat, ideally situated in the heart of Luton Town Centre. Boasting a sleek and modern design this stunning property offers a bright and spacious open plan living area perfect for professionals or couples.

The stylish kitchen comes fully fitted with modern appliances while the contemporary bathroom is finished to a high standard. This newly built flat provides exceptional comfort and convenience, just a few minutes' walk from Luton's main shopping areas, local amenities, and the train station, offering quick and easy access to London and beyond. Available now on an unfurnished basis. Call Nova Estate Agents now to arrange a viewing.

- Nova Estate Agents
- Press Play Button For 360° Walkaround Tour
- Town Centre Location
- Like New
- Available Now
- Modern Finishes
- Kitchen with Appliances Included
- Walking Distance to Train Station

£1,150 Per month

Approx Gross Internal Area
42 sq m / 447 sq ft



Floorplan

This floorplan is only for illustrative purposes and is not to scale. Measurements of rooms, doors, windows, and any items are approximate and no responsibility is taken for any error, omission or mis-statement. Icons of items such as bathroom suites are representations only and may not look like the real items. Made with Made Snappy 360.

Energy Efficiency Rating		
	Current	Potential
Very energy efficient - lower running costs		
(92 plus) A		
(81-91) B		
(69-80) C		
(55-68) D		
(39-54) E		
(21-38) F		
(1-20) G		
Not energy efficient - higher running costs		
England & Wales	EU Directive 2002/91/EC	