



## 161 Whipperley Way, Luton, LU1 5LF

Nova are proud to present this rarely available top floor 3 bedroom flat to let in the Farley Hill area. Offering close access to the Town Centre, M1 J10, local shops, schools and local amenities all nearby,

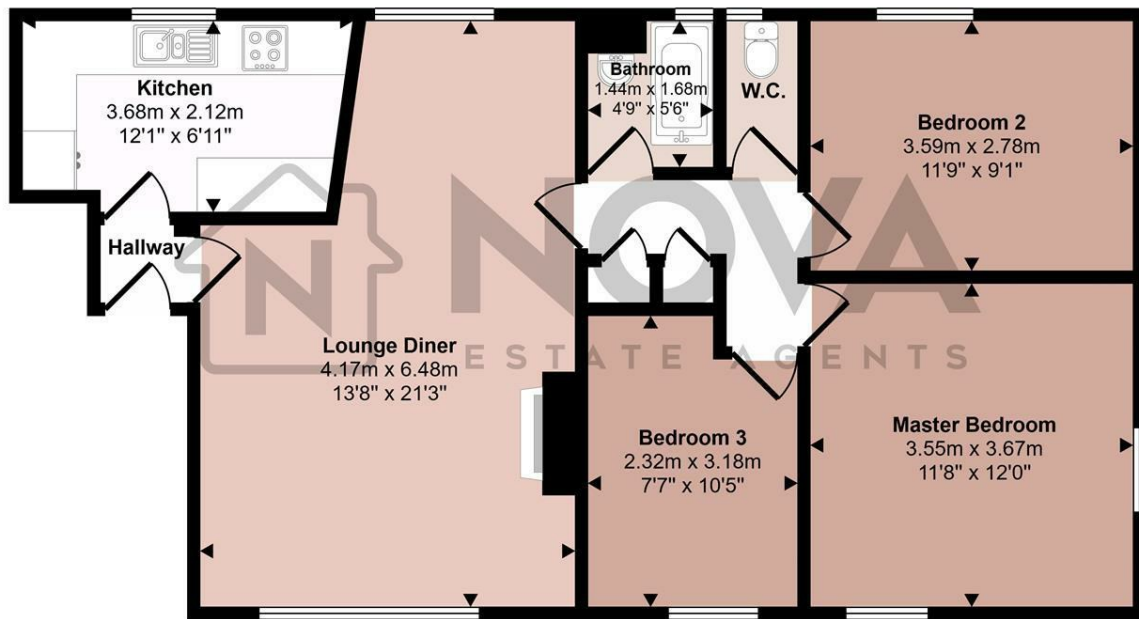
Internally the flat has a large lounge which is an open plan space integrating into the dining area followed by three good size bedrooms. The apartment also has a fitted kitchen with plenty of units for storage and space for appliances. There is also a modern family bathroom consisting of a bath, sink and toilet.

Externally the property offers communal areas and on road parking.

£1,300 Per month

- Nova Estate Agents
- Press Play Button For 360° Walkaround Tour
- 3 Bedroom Large Apartment
- Unfurnished
- Available Mid November
- Open Plan Lounge/Diner
- Farley Hill Area

Approx Gross Internal Area  
73 sq m / 788 sq ft



## Floorplan

This floorplan is only for illustrative purposes and is not to scale. Measurements of rooms, doors, windows, and any items are approximate and no responsibility is taken for any error, omission or mis-statement. Icons of items such as bathroom suites are representations only and may not look like the real items. Made with Made Snappy 360.

