



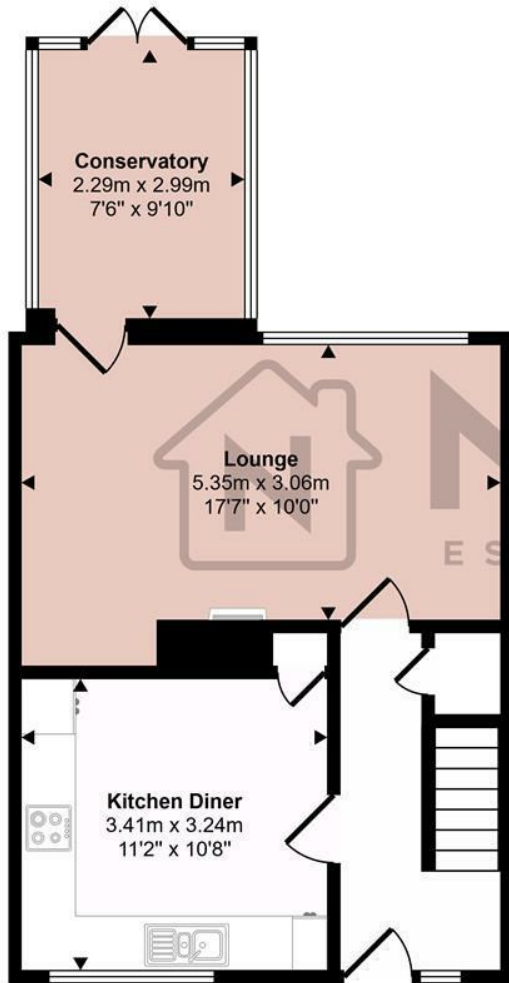
55 Bracklesham Gardens, Luton, Beds, LU2 8QJ

Located in the Stopsley area of Luton, this well presented three bedroom terraced home on Bracklesham Gardens is offered chain free and benefits from a garage in block, on road parking, a large kitchen/diner, and a bright conservatory leading to a private rear garden. The property features three good sized bedrooms, a spacious lounge and is situated in a quiet, sought after residential area close to local schools, shops, and transport links, making it an ideal home for families or first time buyers. Contact Nova Estate Agents today to arrange your viewing.

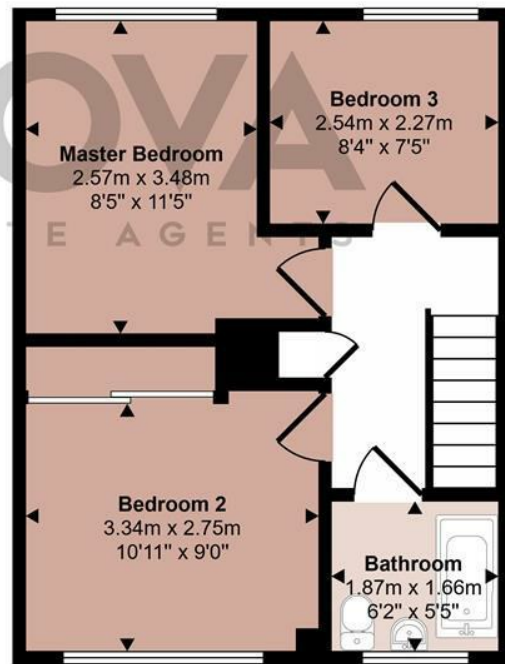
- Nova Estate Agents
- 3 Bedroom House
- Stopsley Area
- Garage in Block and Ample On Road Parking
- Conservatory
- Chain Free
- Large Kitchen Diner
- Close to Local Amenities including Schools, Parks and Supermarkets

£325,000

Approx Gross Internal Area
82 sq m / 881 sq ft



Ground Floor
Approx 45 sq m / 480 sq ft



First Floor
Approx 37 sq m / 401 sq ft

This floorplan is only for illustrative purposes and is not to scale. Measurements of rooms, doors, windows, and any items are approximate and no responsibility is taken for any error, omission or mis-statement. Icons of items such as bathroom suites are representations only and may not look like the real items. Made with Made Snappy 360.

Energy Efficiency Rating		
	Current	Potential
Very energy efficient - lower running costs		
(92 plus) A		
(81-91) B		
(69-80) C		
(55-68) D		
(39-54) E		
(21-38) F		
(1-20) G		
Not energy efficient - higher running costs		
England & Wales		EU Directive 2002/91/EC