



## 4 Swifts Green Terrace, Luton, Beds, LU2 8BW

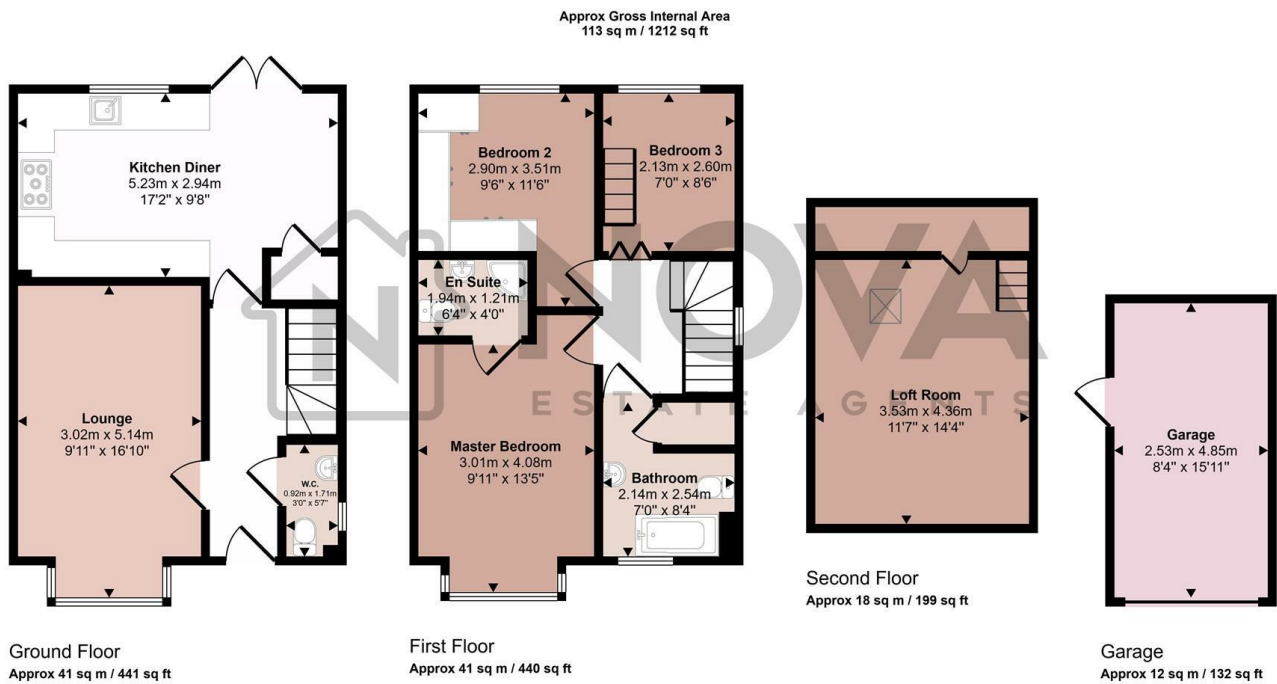
Welcome to this stunning 3 bedroom semi-detached home on the sought after Swifts Green Road in Luton. Offering a perfect blend of contemporary design and future potential, this property is ideal for families or anyone looking to craft their perfect living space.

Inside, the home boasts an immaculate large kitchen, expertly designed with modern appliances and premium finishes, making it a delight for cooking and entertaining. The master bedroom features the luxury of an en-suite, providing a private and convenient retreat. Two additional well-sized bedrooms and a versatile loft room, perfect as an office, playroom, or guest space, add to the home's appeal.

The exterior includes a beautifully landscaped garden, ideal for relaxation or outdoor gatherings. A detached garage and the generous space to extend to the side (subject to planning permission) offer exciting opportunities to customise and grow with the property.

- Nova Estate Agents
- 3 Bedrooms and Loft Room
- Driveway For Multiple Cars
- Detached Garage
- Potential To Extend (STPP)
- Landscaped Garden
- En-Suite to Master Bedroom
- Press Play Button For 360° Walkaround Tour

£395,000



This floorplan is only for illustrative purposes and is not to scale. Measurements of rooms, doors, windows, and any items are approximate and no responsibility is taken for any error, omission or mis-statement. Icons of items such as bathroom suites are representations only and may not look like the real items. Made with Made Snappy 360.

Energy Efficiency Rating		
	Current	Potential
Very energy efficient - lower running costs		
(92 plus) <b>A</b>		
(81-91) <b>B</b>		
(69-80) <b>C</b>		
(55-68) <b>D</b>		
(39-54) <b>E</b>		
(21-38) <b>F</b>		
(1-20) <b>G</b>		
Not energy efficient - higher running costs		
<b>England &amp; Wales</b>	EU Directive 2002/91/EC	