



## Flat 45, 142, Midland Apartments Midland Road, Luton, LU2 0GH

Stylish Penthouse with Private Roof Terrace & Gated Parking – Prime Luton Town Centre Location

Step into luxury with this exceptional 2 bedroom penthouse apartment, perfectly positioned on Midland Road in the bustling heart of Luton Town Centre. This beautifully presented home offers the ideal blend of space, style, convenience and it comes complete with a private allocated parking space within a secure gated car park.

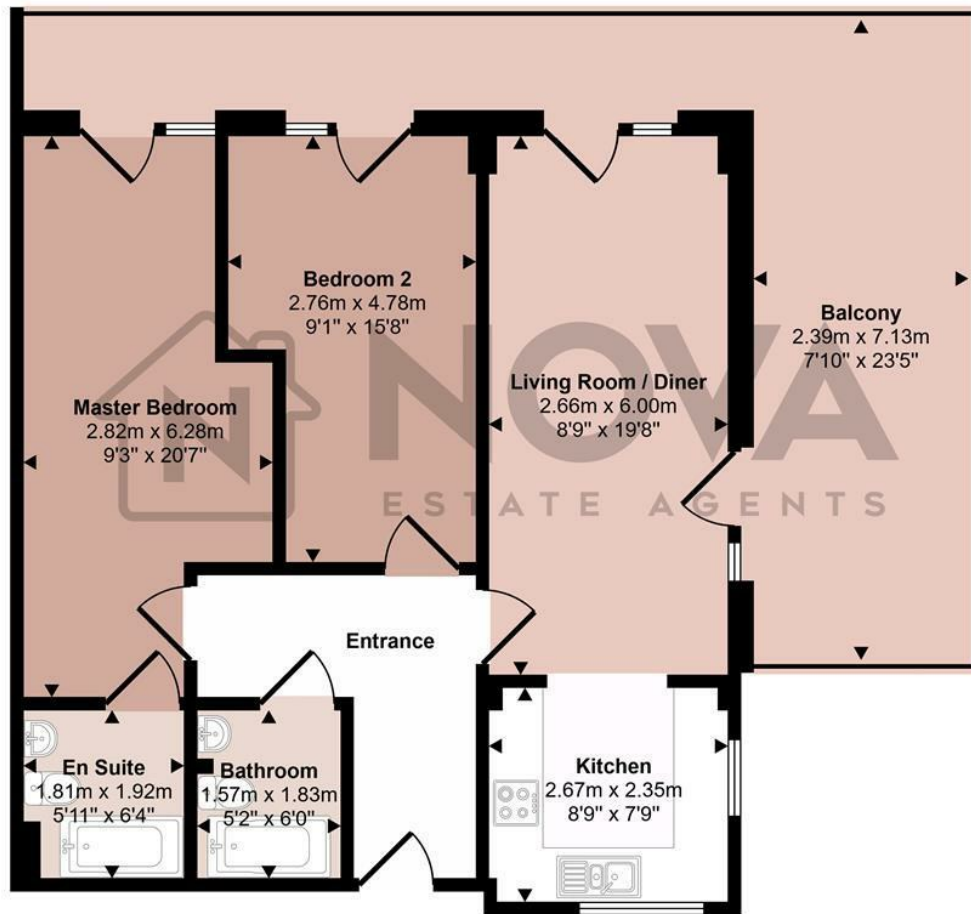
This impressive home briefly comprises a welcoming entrance hall, spacious lounge/diner, modern kitchen, two double bedrooms, en-suite to the master, a sleek family bathroom, and an expansive private roof terrace.

Highlights Include:

- Nova Estate Agents
- Press Play Button For 360° Walkaround Tour
- Spacious 2 Bedroom Penthouse Apartment
- Panoramic Views
- Allocated Parking Space
- Modern Finishes Throughout
- En-suite to Master Bedroom
- Large Balcony
- New Build Warranty Remaining

£240,000

Approx Gross Internal Area  
66 sq m / 709 sq ft



Floorplan

This floorplan is only for illustrative purposes and is not to scale. Measurements of rooms, doors, windows, and any items are approximate and no responsibility is taken for any error, omission or mis-statement. Icons of items such as bathroom suites are representations only and may not look like the real items. Made with Made Snappy 360.

Energy Efficiency Rating		
	Current	Potential
Very energy efficient - lower running costs		
(92 plus) A		
(81-91) B	81	81
(69-80) C		
(55-68) D		
(39-54) E		
(21-38) F		
(1-20) G		
Not energy efficient - higher running costs		
England & Wales	EU Directive 2002/91/EC	