



Flat 1 14 Cardiff Grove, Luton, LU1 1QH

Nova are delighted to introduce to the market this ground floor one bedroom apartment located within walking distance to Luton Town Centre.

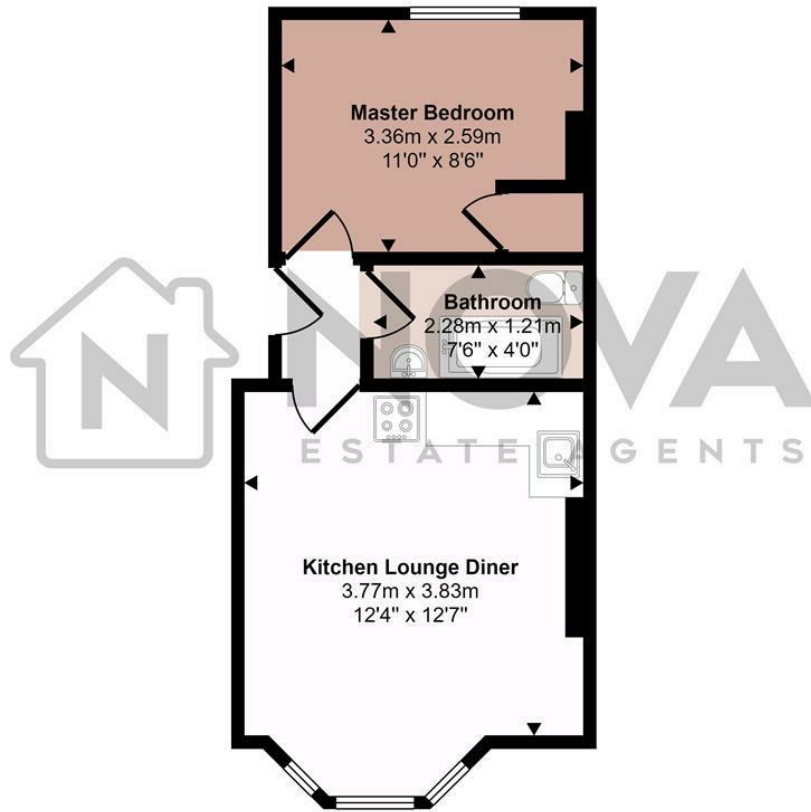
The property briefly comprises entrance hall, spacious lounge/kitchen, double bedroom and bathroom. Further features include a communal garden. There is currently a tenant in situ paying £750pcm who would like to continue residing at the property.

Get in contact with Nova today to arrange an internal viewing!

- Nova Estate Agents
- Press Play Button For 360° Walkaround Tour
- One Bed Ground Floor Flat
- Open Plan Living Room / Diner
- Great Value
- Close to Town Centre and Amenities

£70,000

Approx Gross Internal Area
29 sq m / 317 sq ft



Floorplan

This floorplan is only for illustrative purposes and is not to scale. Measurements of rooms, doors, windows, and any items are approximate and no responsibility is taken for any error, omission or mis-statement. Icons of items such as bathroom suites are representations only and may not look like the real items. Made with Made Snappy 360.

