



35 Ridge Avenue, Harpenden, AL5 3LT

This beautifully modernised 5 bedroom detached property on Ridge Avenue offers contemporary living at its finest. Designed with both style and functionality in mind, this home boasts a spacious open-plan layout, perfect for family life and entertaining.

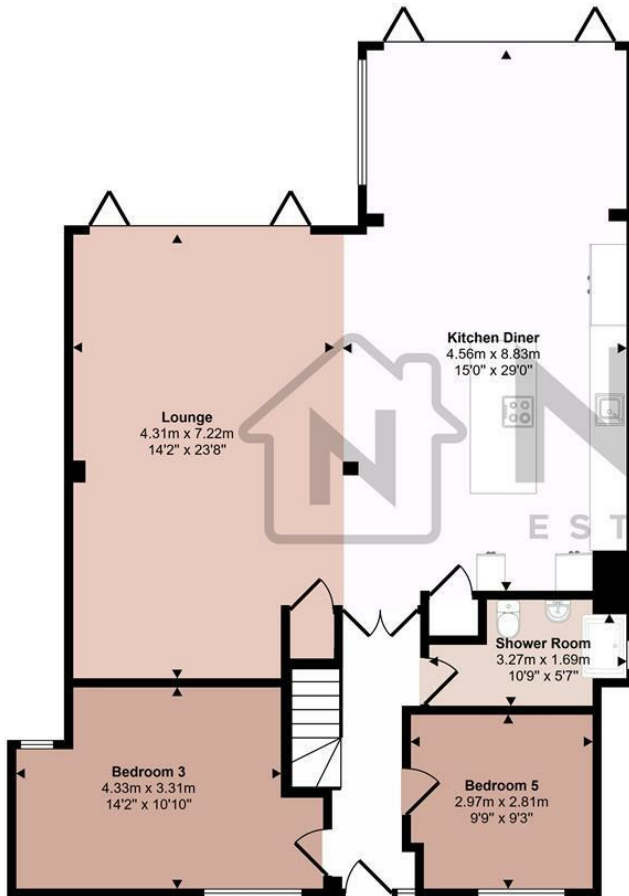
Ridge Avenue features an expansive open plan layout, seamlessly incorporating a large living room, dining area, and high-specification kitchen. The living and dining areas are bathed in natural light thanks to bi-fold doors that open onto the garden. The kitchen is a chef's dream, equipped with premium AEG appliances, including a sleek worktop downdraft extractor and a built-in coffee machine.

There are four generously sized double bedrooms and a versatile fifth bedroom currently used as a home gym. The master suite is a true comes complete with a Juliet balcony, a dedicated dressing area, and a luxurious en-suite bathroom featuring both a bath and a walk in shower.

£4,250 Per month

- Nova Estate Agents
- Press Play Button For 360° Walkaround Tour
- 5 Bedroom Detached Home
- Modern High Specification Finishes
- Large Open Plan Layout
- En-suite to Master Bedroom
- Private Garden
- Large Driveway
- Close to Schools and Local Amenities
- Available End of November

Approx Gross Internal Area
186 sq m / 1998 sq ft



Ground Floor
Approx 110 sq m / 1185 sq ft

Denotes head height below 1.5m

This floorplan is only for illustrative purposes and is not to scale. Measurements of rooms, doors, windows, and any items are approximate and no responsibility is taken for any error, omission or mis-statement. Icons of items such as bathroom suites are representations only and may not look like the real items. Made with Made Snappy 360.

Energy Efficiency Rating		
	Current	Potential
Very energy efficient - lower running costs		
(92 plus) A		
(81-91) B		
(69-80) C		
(55-68) D		
(39-54) E		
(21-38) F		
(1-20) G		
Not energy efficient - higher running costs		
England & Wales	EU Directive 2002/91/EC	

74 82