



7 Saltdean Close, Luton, LU2 8QN

This delightful end of terrace home on Saltdean Close offers a perfect blend of modern updates and practical living spaces. The recently refurbished kitchen boasts a contemporary design, combining style and functionality. With three generously sized bedrooms, this property provides ample room for comfortable living.

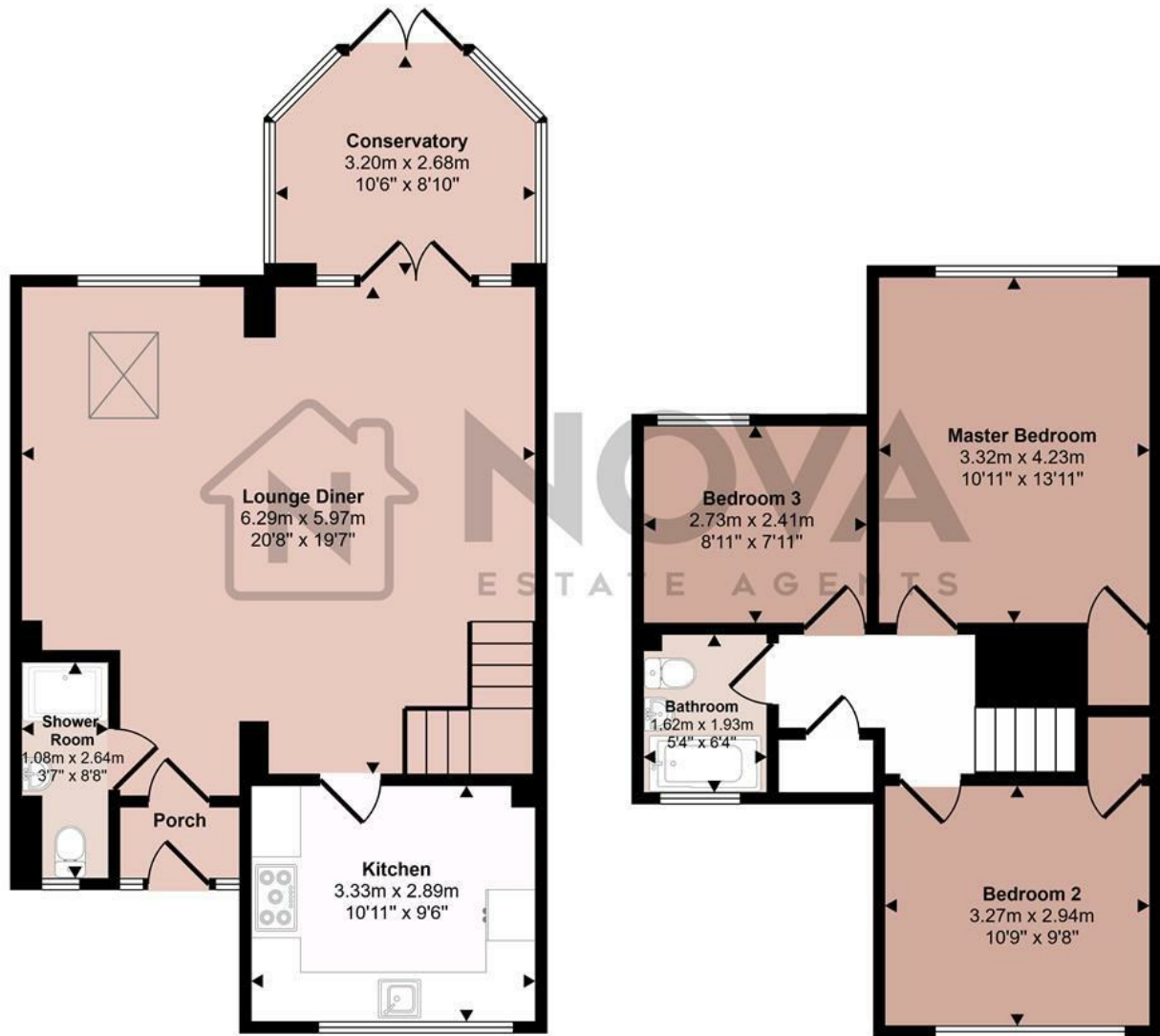
A bright and airy conservatory extends the living area, creating a space to enjoy natural light throughout the year. The home features both a downstairs shower room and an upstairs bathroom, offering convenience for family living and guests. Additionally, off road parking provides ease and security.

Situated in a quiet and friendly neighborhood, this property benefits from its proximity to local amenities, schools, and transport links. For those who enjoy the outdoors, the area is surrounded by scenic countryside walks and parks, perfect for relaxation or recreation. This is a fantastic opportunity to secure a home that balances comfort, style, and practicality. Arrange a viewing today to see all that it has to offer!

- Nova Estate Agents
- Off Road Parking
- Modern Kitchen
- 3 Generous Sized Bedrooms
- Popular Location
- Two Bathrooms
- Close To Local Amenities and M1 Junction
- Press Play Button For 360° Walkaround Tour

£1,850

Approx Gross Internal Area
103 sq m / 1108 sq ft



Ground Floor
Approx 59 sq m / 640 sq ft

First Floor
Approx 43 sq m / 468 sq ft

This floorplan is only for illustrative purposes and is not to scale. Measurements of rooms, doors, windows, and any items are approximate and no responsibility is taken for any error, omission or mis-statement. Icons of items such as bathroom suites are representations only and may not look like the real items. Made with Made Snappy 360.

