



40 Mixes Hill Road, Luton, Bedfordshire, LU2 7TX

Nova Estate Agents are delighted to present this unique four bedroom chalet style detached bungalow on Mixes Hill Road. Conveniently located within walking distance of Stopsley Village, this property has been extensively extended and must be seen to be fully appreciated.

The ground floor features four bedrooms, including a master bedroom exceeding 16ft x 12ft. The open plan dining area overlooks the garden, and there is also an open plan breakfast area, a modern kitchen, and a five piece bathroom.

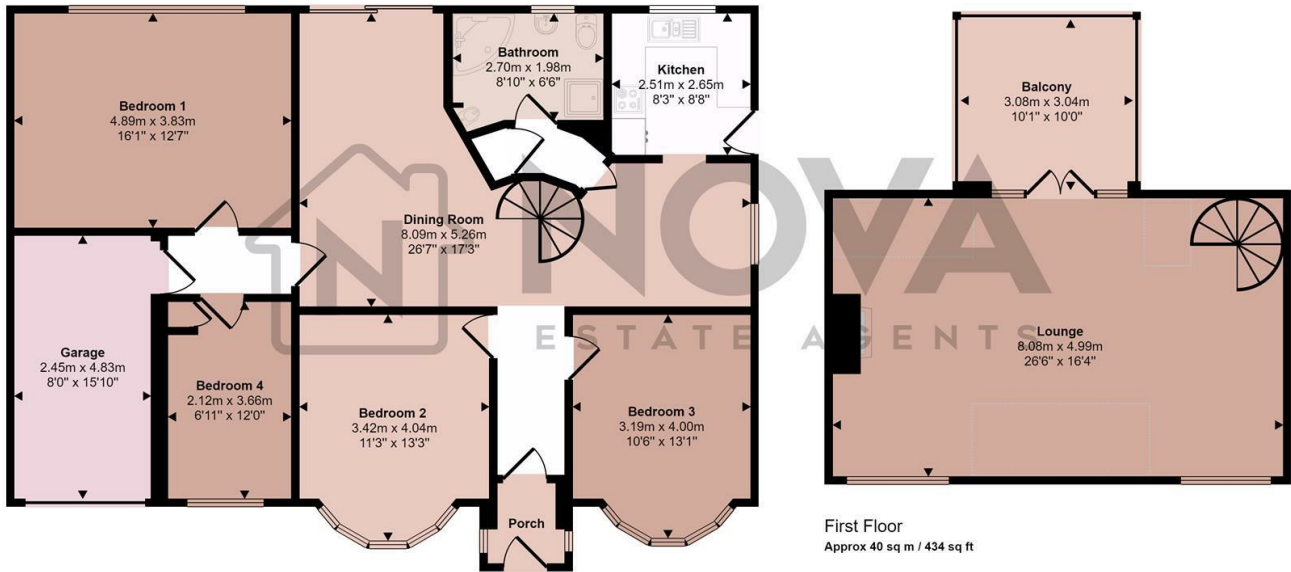
A striking spiral staircase leads to the first floor lounge, which is approximately 26ft in length and opens onto a veranda with views of a beautifully mature and large landscaped rear garden with pond and water features.

This property offers a generous space and footprint which gives ample space to entertain guests

- Nova Estate Agents
- 4 Bedroom Detached Bungalow
- Expansive Plot
- Driveway
- Garage
- Available Now
- Popular Location
- Large Garden

£1,800 Per month

Approx Gross Internal Area
160 sq m / 1722 sq ft



Ground Floor
Approx 120 sq m / 1289 sq ft

Denotes head height below 1.5m

This floorplan is only for illustrative purposes and is not to scale. Measurements of rooms, doors, windows, and any items are approximate and no responsibility is taken for any error, omission or mis-statement. Icons of items such as bathroom suites are representations only and may not look like the real items. Made with Made Snappy 360.

