



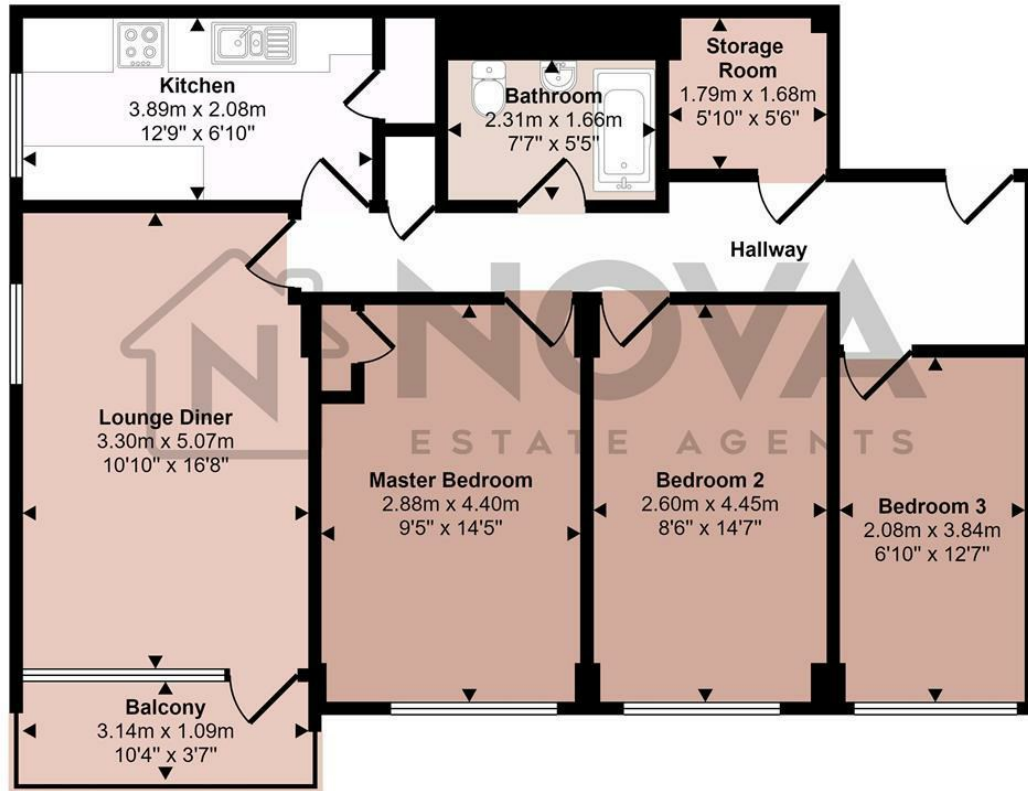
## 44 Mosedale Court Teesdale, Luton, Beds, LU4 9JL

Nova Estate Agents are delighted to present this spacious and well laid out 3 bedroom flat situated on the 4th floor of Mossdale Court on Teesdale Road. The property offers three generously sized double bedrooms, a bright and airy lounge, and a large, functional kitchen, providing ample space for comfortable living. It also benefits from a private balcony, perfect for relaxing or enjoying some fresh air, as well as a substantial walk-in storage cupboard offering excellent additional storage. The flat is surrounded by plenty of parking spaces, making it convenient for residents and visitors alike. Ideally located close to local schools, nurseries, shops, and parks, this home is perfect for families or professionals seeking a well connected and practical living space. The property is available now on a part-furnished basis, early viewings is highly recommended. Call Nova Estate Agents to arrange a visit.

- Nova Estate Agents
- Press Play Button For 360° Walkaround Tour
- 3 Bedroom Flat
- Large Living Accomadation
- Balcony With Wide Aspect Views
- Close To Shops And Schools
- Available Now
- Gas Central Heating
- Lift Access
- Part Furnished

£1,400 Per month

Approx Gross Internal Area  
81 sq m / 869 sq ft



## Floorplan

This floorplan is only for illustrative purposes and is not to scale. Measurements of rooms, doors, windows, and any items are approximate and no responsibility is taken for any error, omission or mis-statement. Icons of items such as bathroom suites are representations only and may not look like the real items. Made with Made Snappy 360.

