



275 High Town Road, Luton, LU2 0BZ

****CHARMING & VERSATILE PERIOD PROPERTY WITH MODERN UPGRADES****

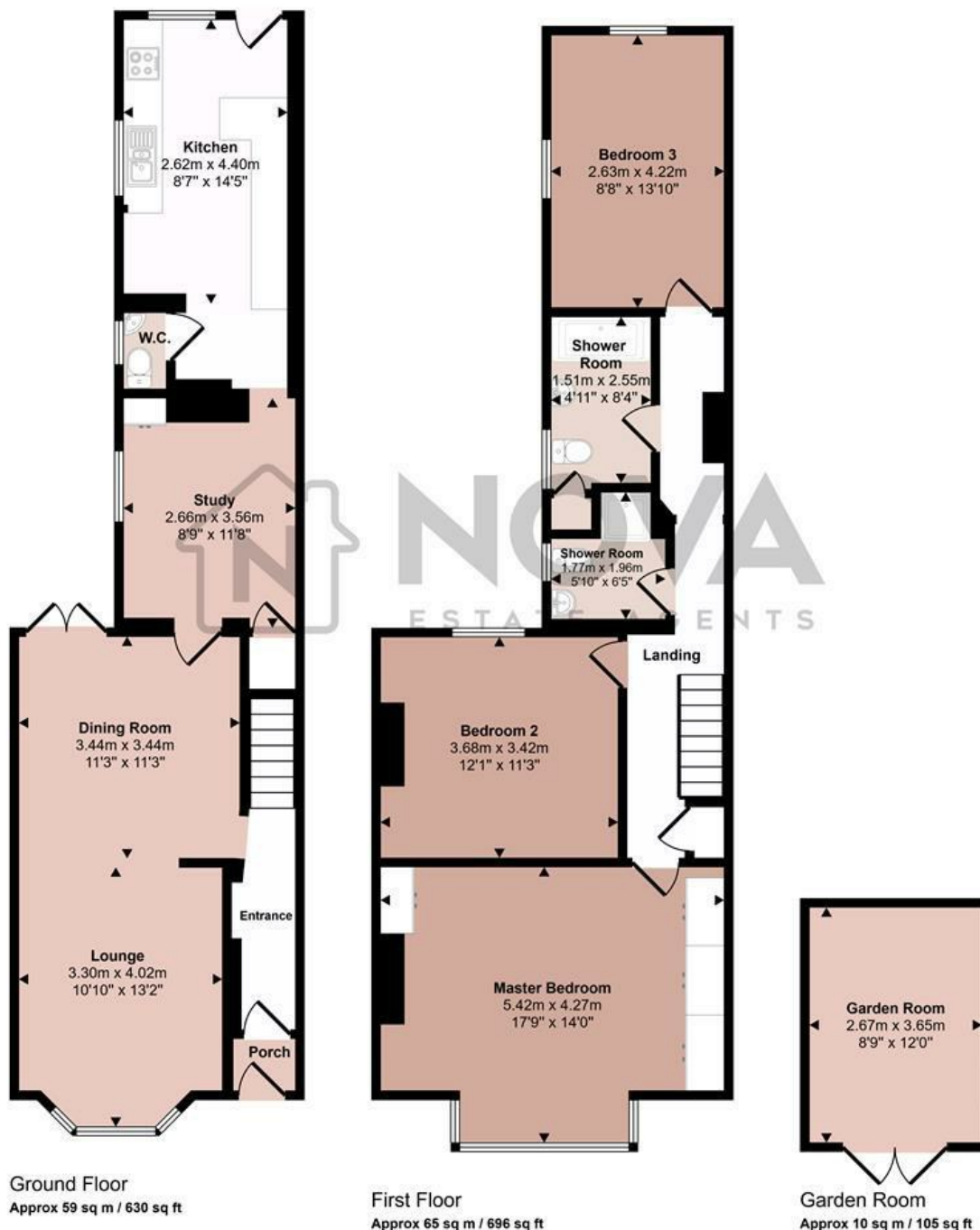
Nova are proud to present this beautifully updated and generously proportioned bay fronted period home, ideal for commuters, families or investment buyers alike. Boasting a wealth of character, this shabby-chic styled home blends traditional charm with contemporary touches across a spacious layout.

With three elegant reception rooms and three spacious double bedrooms this home is perfect for large families or those seeking room to grow. The living room is highlighted by a large bay window and flows into the dining space. Further to the rear is a versatile study or potential breakfast room/lounge. Beyond, you'll find a well equipped kitchen with integrated oven and hob plus space for all other essential appliances. A convenient W/C is also located on the ground floor.

£375,000

- Nova Estate Agents
- Press Play Button For 360° Walkaround Tour
- Spacious Home with Charm
- Walking Distance to Luton Train Station
- Three Double Bedrooms
- Two Shower Rooms
- Summerhouse
- Garden Veranda
- Presented to a High Standard
- Potential HMO Conversion

Approx Gross Internal Area
133 sq m / 1431 sq ft



This floorplan is only for illustrative purposes and is not to scale. Measurements of rooms, doors, windows, and any items are approximate and no responsibility is taken for any error, omission or mis-statement. Icons of items such as bathroom suites are representations only and may not look like the real items. Made with Made Snappy 360.

Energy Efficiency Rating		
	Current	Potential
Very energy efficient - lower running costs		
(92 plus) A		
(81-91) B		81
(69-80) C		
(55-68) D	50	
(39-54) E		
(21-38) F		
(1-20) G		
Not energy efficient - higher running costs		
England & Wales	EU Directive 2002/91/EC	