



## 173 Old Bedford Road, Luton, Beds, LU2 7EH

Nestled on the highly sought after Old Bedford Road in Luton, this expansive 5 bedroom detached property presents a unique opportunity to craft your perfect family home. Offering over 2,000 sq ft of living space, it's an unmissable blank canvas ready for refurbishment.

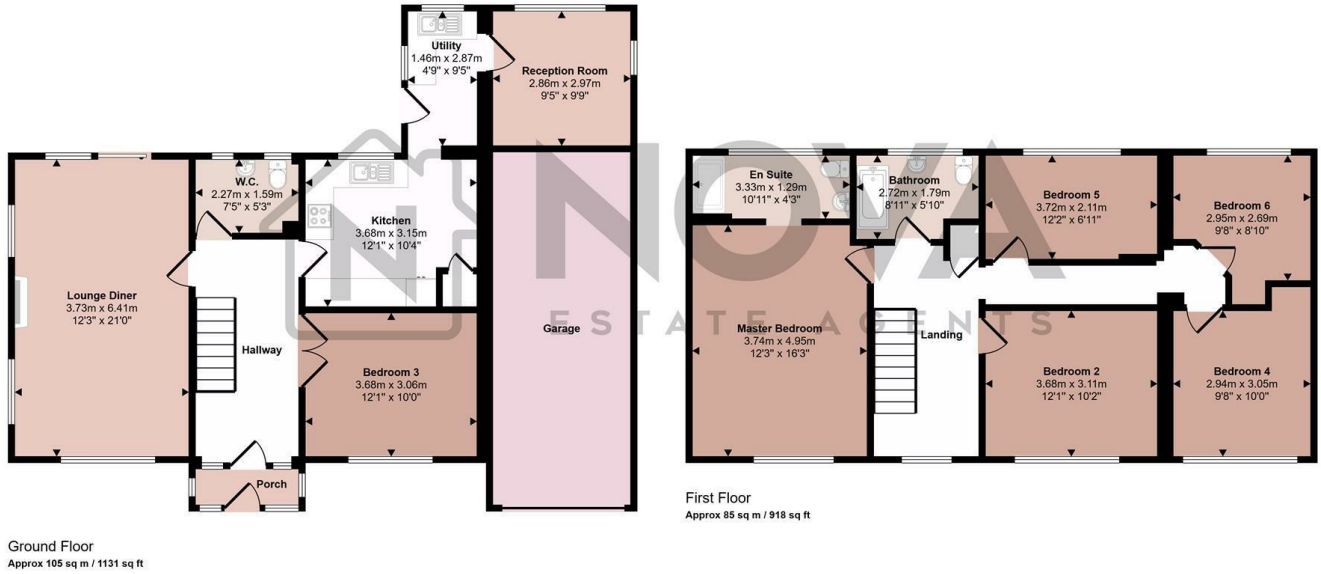
Set on a generous plot, the property features a large driveway with plenty of off road parking, while the spacious rear garden offers a wealth of possibilities for outdoor living and entertaining. The expansive size and adaptable layout provide an exciting opportunity for those with vision and creativity to transform this property into something truly special.

A rare find in this desirable location, it is ideally situated close to local amenities, excellent schools, and convenient transport links, making it the perfect investment for those seeking both space and potential.

- Nova Estate Agents
- Detached
- Large Driveway
- Redevelopment Opportunity
- Large Plot
- Popular Location
- Press Play Button For 360° Walkaround Tour
- 5 Bedroom
- Over 2000 Sq Ft

£800,000

Approx Gross Internal Area  
190 sq m / 2049 sq ft



This floorplan is only for illustrative purposes and is not to scale. Measurements of rooms, doors, windows, and any items are approximate and no responsibility is taken for any error, omission or mis-statement. Icons of items such as bathroom suites are representations only and may not look like the real items. Made with Made Snappy 360.

