



100 Gooseberry Hill, Luton, LU3 2DY

Situated on the desirable Gooseberry Hill, this beautifully presented two bedroom semi-detached bungalow offers stylish and comfortable living in a sought after location. The property features two spacious double bedrooms, providing ample space for relaxation and flexibility.

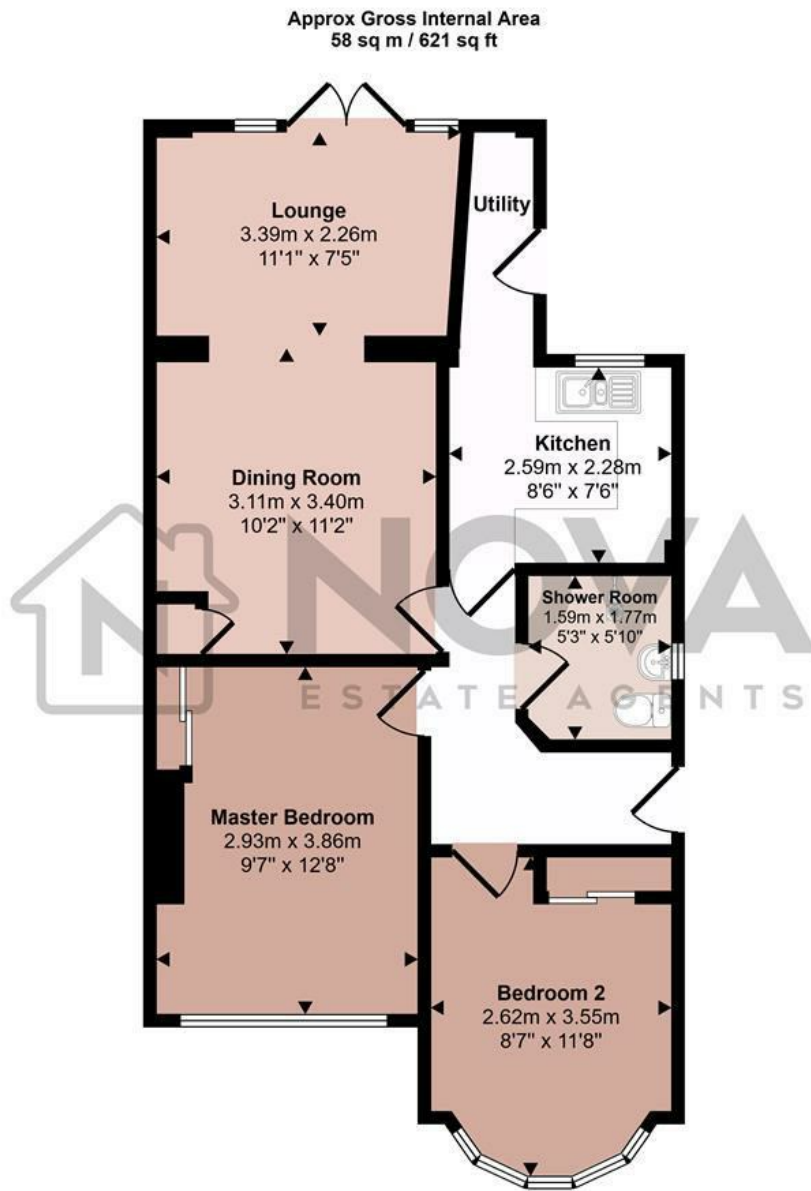
The bungalow boasts off road parking for 3 to 4 cars, making it ideal for households with multiple vehicles or those who enjoy hosting guests. Presented in immaculate condition throughout, this home is ready for immediate occupancy and offers a blend of modern finishes and practical design.

Located in a quiet and established neighborhood, this property is perfect for downsizers, small families, or professionals seeking a move in ready home with excellent curb appeal.

Don't miss the opportunity to view this stunning bungalow – a rare find in such pristine condition.

- Nova Estate Agents
- Press Play Button For 360° Walkaround Tour
- Immaculate condition
- Two Double Bedrooms
- Off Road Parking
- Semi Detached

£325,000



Floorplan

This floorplan is only for illustrative purposes and is not to scale. Measurements of rooms, doors, windows, and any items are approximate and no responsibility is taken for any error, omission or mis-statement. Icons of items such as bathroom suites are representations only and may not look like the real items. Made with Made Snappy 360.

