



60 Meyrick Avenue, Luton, LU1 5JR

We are delighted to present this attractive bay fronted semi-detached family home, ideally located in the sought after neighbourhood of Meyrick Avenue. Offering three spacious bedrooms, open plan lounge / diner and a charming tiered garden, this property is a fantastic opportunity for first-time buyers and investors alike.

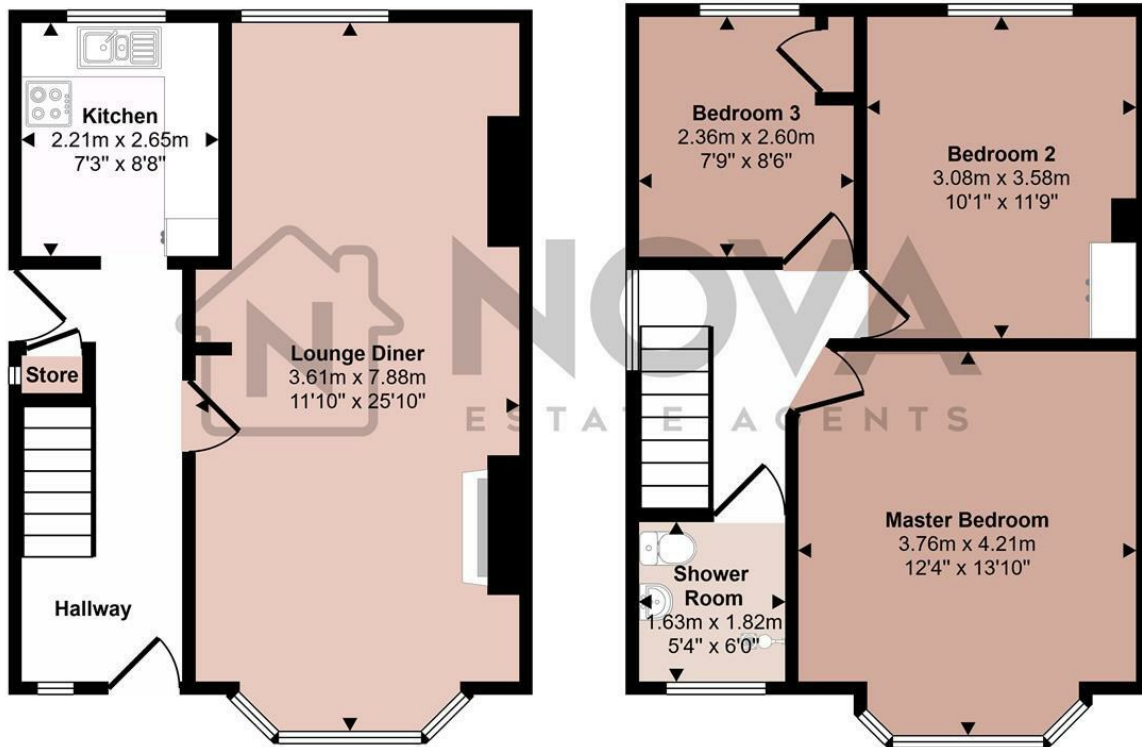
The generous living room is highlighted by a distinctive bay window that floods the space with natural light, creating a bright and welcoming atmosphere. This room is perfect for both entertaining and everyday family living as it integrates into the dining room. The kitchen is located off the entrance hall. The garden is ideal for alfresco dining and summer gatherings.

Upstairs, you'll find three well proportioned bedrooms and a shower room. The home is ideally situated with excellent transport links, just moments from M1 Junction 10 and within easy reach of Luton Train Station offering convenient access to London and surrounding areas.

- Nova Estate Agents
- Press Play Button For 360° Walkaround Tour
- 3 Bedroom Home
- Large Tiered Garden
- Open Plan Living
- Driveway Parking
- Close to Transport Links
- Walking Distance to Town Centre
- Chain Free!

£350,000

Approx Gross Internal Area
84 sq m / 908 sq ft



Ground Floor
Approx 42 sq m / 452 sq ft

First Floor
Approx 42 sq m / 456 sq ft

This floorplan is only for illustrative purposes and is not to scale. Measurements of rooms, doors, windows, and any items are approximate and no responsibility is taken for any error, omission or mis-statement. Icons of items such as bathroom suites are representations only and may not look like the real items. Made with Made Snappy 360.

Energy Efficiency Rating		
	Current	Potential
Very energy efficient - lower running costs		
(92 plus) A		
(81-91) B		
(69-80) C		
(55-68) D		
(39-54) E		
(21-38) F		
(1-20) G		
Not energy efficient - higher running costs		
England & Wales	EU Directive 2002/91/EC	