



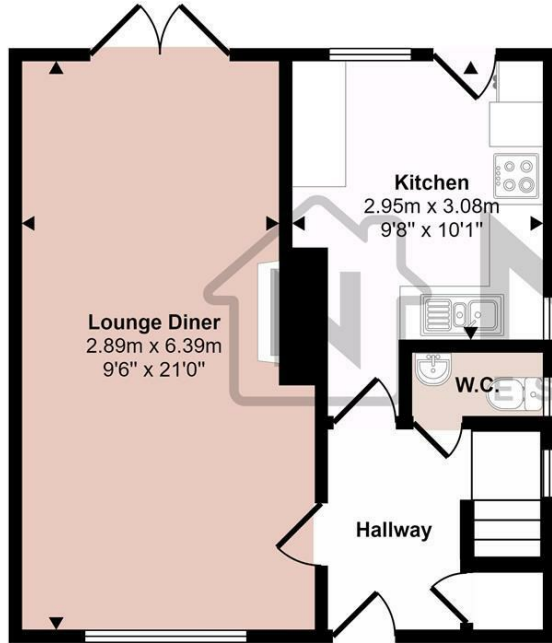
44 Hallwicks Road, Luton, Beds, LU2 9BQ

A well presented 3 bedroom semi detached home on Hallwicks Road, available now, offering spacious accommodation ideal for families or professionals. The property features three generous bedrooms, a bright reception room, a low-maintenance garden, and driveway parking. Situated in a popular Stopsley area of Luton, it's conveniently located close to local schools, shops, and everyday amenities, making it the perfect blend of comfort and convenience. Available on an unfurnished basis. Call Nova Estate Agents today to book a viewing.

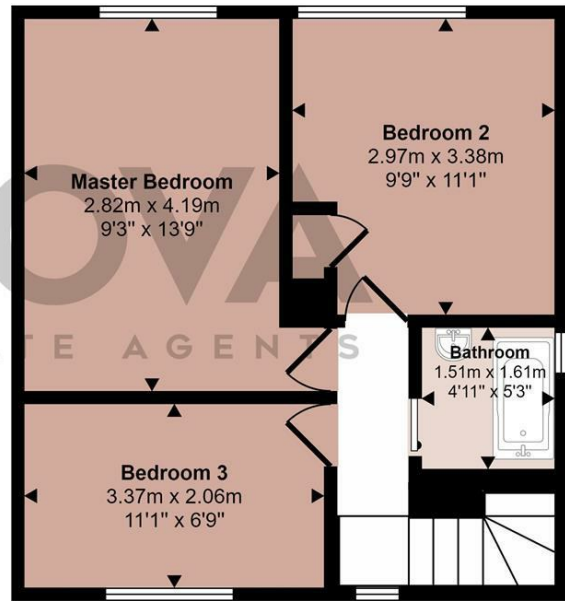
£1,500 Per month

- Nova Estate Agents
- Press Play Button For 360° Walkaround Tour
- 3 Bedroom Semi Detached
- Driveway for 3 cars
- Rear Gardens
- Available Now
- Unfurnished
- Stopsley Locality
- Close to Shops and Schools

Approx Gross Internal Area
76 sq m / 820 sq ft



Ground Floor
Approx 38 sq m / 407 sq ft



First Floor
Approx 38 sq m / 413 sq ft

This floorplan is only for illustrative purposes and is not to scale. Measurements of rooms, doors, windows, and any items are approximate and no responsibility is taken for any error, omission or mis-statement. Icons of items such as bathroom suites are representations only and may not look like the real items. Made with Made Snappy 360.

