



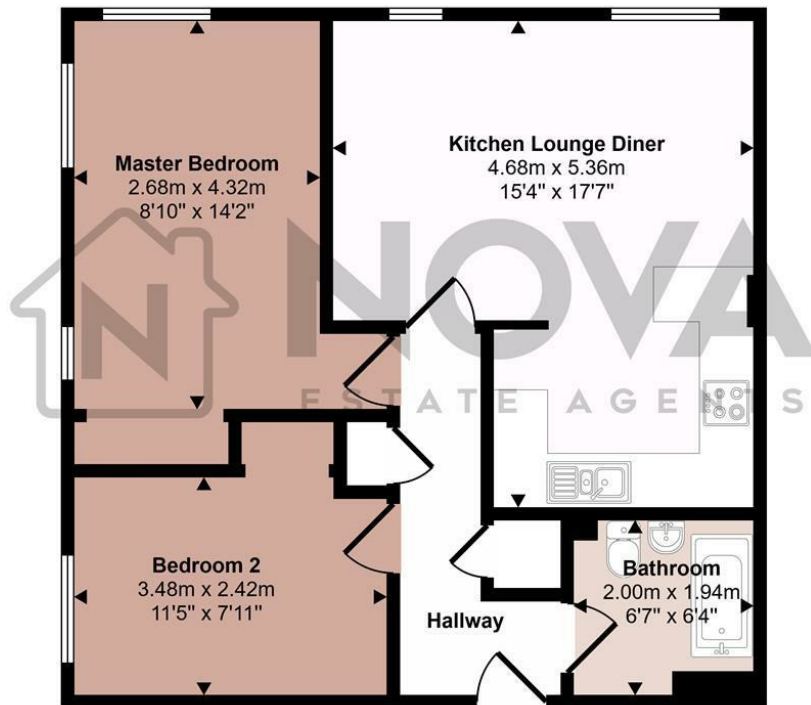
Flat 39, Barons Court Earls Meade, Luton, Beds, LU2 7EY

Welcome to this beautifully refurbished 2 bedroom flat located in the sought after Barons Court in the Earls Meade development. Immaculately presented throughout, the property offers a bright and airy living space, a sleek newly fitted kitchen with integrated appliances, two generous bedrooms, and a stylish modern bathroom. Further benefits include allocated private parking and double glazing. Ideally situated just around the corner from the beautiful Wardown Park and within easy walking distance of Luton Main Line Train Station, this flat is perfect for professionals, couples, or small families looking for quality accommodation in a prime location. Available now chain free. Call Nova Estate Agents to book a viewing.

£200,000

- Nova Estate Agents
- Press Play Button For 360° Walkaround Tour
- Completely Refurbished
- Available Now
- Chain Free
- Allocated Parking Space
- Private Gym Access
- Round The Corner From Wardown Park
- Walking Distance Of Luton Main Line Train Station
- Great Buy To Let Or Starter Home

Approx Gross Internal Area
56 sq m / 607 sq ft



Floorplan

This floorplan is only for illustrative purposes and is not to scale. Measurements of rooms, doors, windows, and any items are approximate and no responsibility is taken for any error, omission or mis-statement. Icons of items such as bathroom suites are representations only and may not look like the real items. Made with Made Snappy 360.

