



9 Shingle Close, Luton, LU3 4AR

****Charming Two Bedroom Home in the sought after Barton Hills location****

Tucked away in the peaceful and highly regarded Shingle Close, this delightful two bedroom property is a fantastic find for first time buyers or anyone looking to put their own stamp on a property in the ever popular Barton Hills area of Luton.

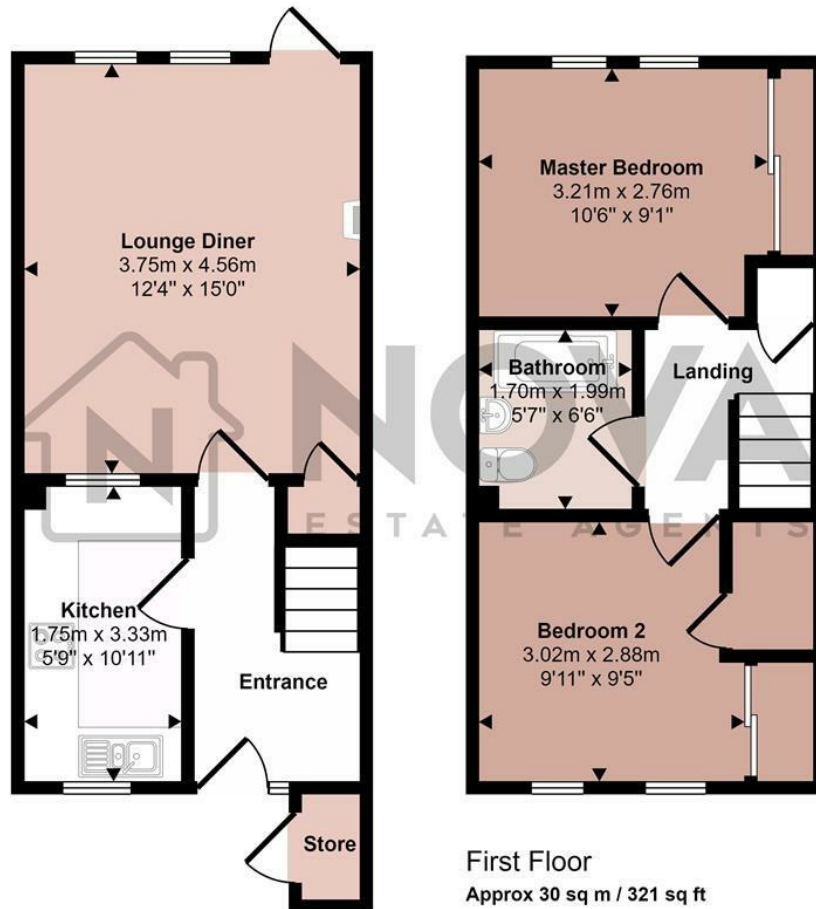
Step inside and you'll find a bright and airy entrance hall leading into a generously sized lounge, filled with natural light, perfect for relaxing or entertaining. The adjoining kitchen is well equipped with ample cupboard space, making meal prep and storage a breeze.

Upstairs, the home continues to impress with two spacious double bedrooms and a well-proportioned family bathroom. Both bedrooms offer plenty of space and flexibility, ideal for couples, small families or even a home office setup.

- Nova Estate Agents
- Press Play Button For 360° Walkaround Tour
- Popular Barton Hills Location
- Two Bedroom Home
- Perfect First Time Buy
- Private Garden
- Allocated Parking Space
- Chain Free!

£260,000

Approx Gross Internal Area
61 sq m / 652 sq ft



Ground Floor
Approx 31 sq m / 332 sq ft

This floorplan is only for illustrative purposes and is not to scale. Measurements of rooms, doors, windows, and any items are approximate and no responsibility is taken for any error, omission or mis-statement. Icons of items such as bathroom suites are representations only and may not look like the real items. Made with Made Snappy 360.

