



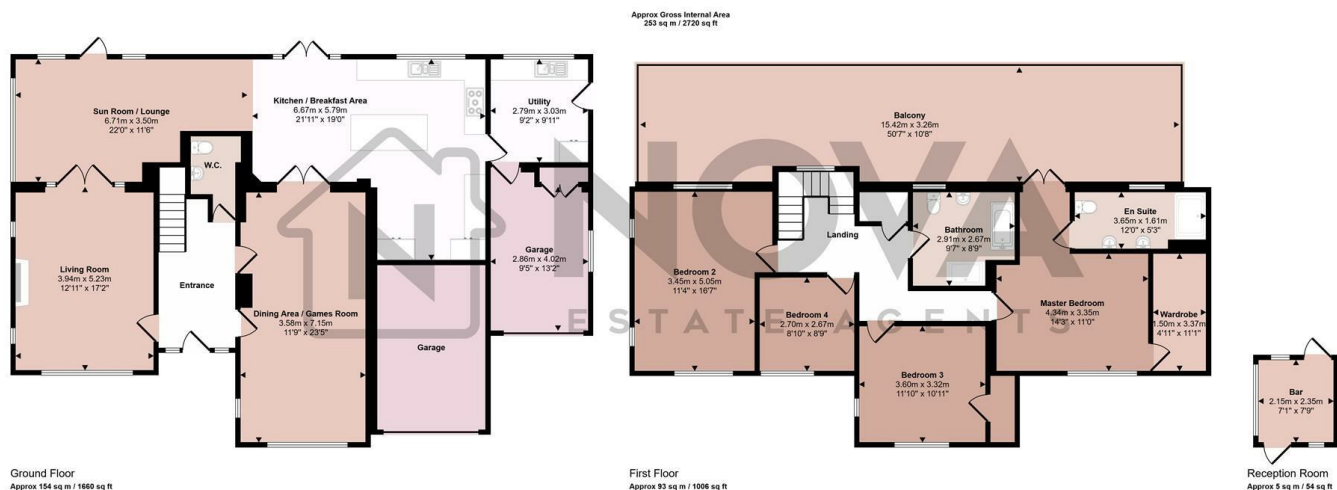
187 Old Bedford Road, Luton, Bedfordshire, LU2 7EH

A rare opportunity to acquire a stunning, extended four bedroom detached home on one of Luton's most prestigious roads. Set on a generous plot, this impressive property offers expansive living space both inside and out, making it an ideal choice for a growing family. There is also potential for further extension (STPP).

The home is approached via a charming carriage driveway. Inside, the ground floor boasts four principal living areas. The main reception room is a spacious dual aspect lounge featuring a statement fireplace, while a delightful sunroom at the rear provides a cosy additional living space with French doors opening onto the garden. The rear extension is bathed in natural light due to multiple windows including two skylights. The modern kitchen, complete with a large island and integrated appliances offers both style and functionality with access to the garage and utility room. On the opposite side of the hallway, the dining room seamlessly connects to an integrated games room, providing a versatile entertaining space.

£1,200,000

- Nova Estate Agents
- Press Play Button For 360° Walkaround Tour
- Executive Detached Residence
- Extended
- Large Carriage Driveway and Garage
- En-suite & Walk in Wardrobe to Master
- Popular Location
- Large Kitchen with Island
- Utility Room
- 100ft+ Garden with Summerhouse/Bar



This floorplan is only for illustrative purposes and is not to scale. Measurements of rooms, doors, windows, and any items are approximate and no responsibility is taken for any error, omission or misstatement. Some of items such as bathroom suites are representations only and may not look like the real items. Made with Made Snappy 360.

